

## Product datasheet for **TA505434AM**

### ETS2 Mouse Monoclonal Antibody (Biotin conjugated) [Clone ID: OTI3B9]

#### Product data:

Product Type:	Primary Antibodies
Clone Name:	OTI3B9
Applications:	WB
Recommended Dilution:	WB 1:2000
Reactivity:	Human, Mouse, Rat
Host:	Mouse
Isotype:	IgG1
Clonality:	Monoclonal
Immunogen:	Human recombinant protein fragment corresponding to amino acids 90-349 of human ETS2(NP_005230) produced in E.coli.
Formulation:	PBS (pH 7.3) containing 1% BSA, 50% glycerol and 0.02% sodium azide.
Concentration:	0.5 mg/ml
Purification:	Purified from mouse ascites fluids or tissue culture supernatant by affinity chromatography (protein A/G)
Conjugation:	Biotin
Storage:	Store at -20°C as received.
Stability:	Stable for 12 months from date of receipt.
Predicted Protein Size:	52.8 kDa
Gene Name:	ETS proto-oncogene 2, transcription factor
Database Link:	<a href="#">NP_005230</a> <a href="#">Entrez Gene 23872 Mouse</a> <a href="#">Entrez Gene 304063 Rat</a> <a href="#">Entrez Gene 2114 Human</a> <a href="#">P15036</a>
Background:	This gene encodes a transcription factor which regulates genes involved in development and apoptosis. The encoded protein is also a protooncogene and shown to be involved in regulation of telomerase. A pseudogene of this gene is located on the X chromosome. Alternative splicing results in multiple transcript variants. [provided by RefSeq, Jan 2012]
Synonyms:	ETS2IT1

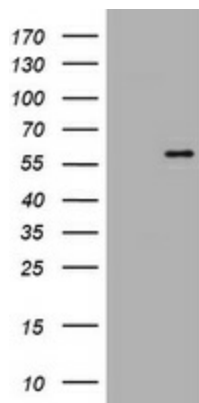


[View online »](#)

Protein Families: Druggable Genome, Transcription Factors

Protein Pathways: Dorso-ventral axis formation

### Product images:



HEK293T cells were transfected with the pCMV6-ENTRY control (Left lane) or pCMV6-ENTRY ETS2 ([RC207377], Right lane) cDNA for 48 hrs and lysed. Equivalent amounts of cell lysates (5 ug per lane) were separated by SDS-PAGE and immunoblotted with anti-ETS2. Positive lysates [LY401607] (100ug) and [LC401607] (20ug) can be purchased separately from OriGene.