

## Product datasheet for **TA505425S**

### **KIF25 Mouse Monoclonal Antibody [Clone ID: OTI2F4]**

#### **Product data:**

<b>Product Type:</b>	Primary Antibodies
<b>Clone Name:</b>	OTI2F4
<b>Applications:</b>	IF, IHC, WB
<b>Recommended Dilution:</b>	WB 1:500~2000, IHC 1:150, IF 1:100
<b>Reactivity:</b>	Human
<b>Host:</b>	Mouse
<b>Isotype:</b>	IgG1
<b>Clonality:</b>	Monoclonal
<b>Immunogen:</b>	Full length human recombinant protein of human KIF25(NP_005346) produced in HEK293T cell.
<b>Formulation:</b>	PBS (pH 7.3) containing 1% BSA, 50% glycerol and 0.02% sodium azide.
<b>Concentration:</b>	1 mg/ml
<b>Purification:</b>	Purified from mouse ascites fluids or tissue culture supernatant by affinity chromatography (protein A/G)
<b>Conjugation:</b>	Unconjugated
<b>Storage:</b>	Store at -20°C as received.
<b>Stability:</b>	Stable for 12 months from date of receipt.
<b>Predicted Protein Size:</b>	35.1 kDa
<b>Gene Name:</b>	kinesin family member 25
<b>Database Link:</b>	<a href="#">NP_005346</a> <a href="#">Entrez Gene 3834 Human</a> <a href="#">Q9UIL4</a>
<b>Background:</b>	The protein encoded by this gene is a member of the kinesin-like protein family. Protein family members are microtubule-dependent molecular motors that transport organelles within cells and move chromosomes during cell division. However, the particular function of this gene product has not yet been determined. Two alternatively spliced transcript variants which encode products have been described. Other splice variants have been found that lack exon 2 and the initiation codon for translation. [provided by RefSeq]

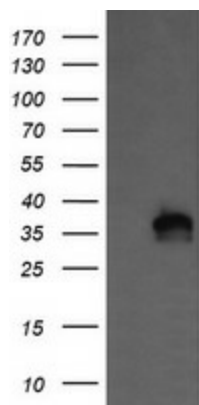


[View online »](#)

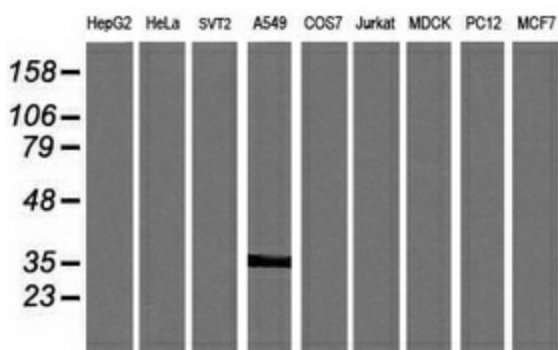
Synonyms: KNSL3

Protein Families: Druggable Genome

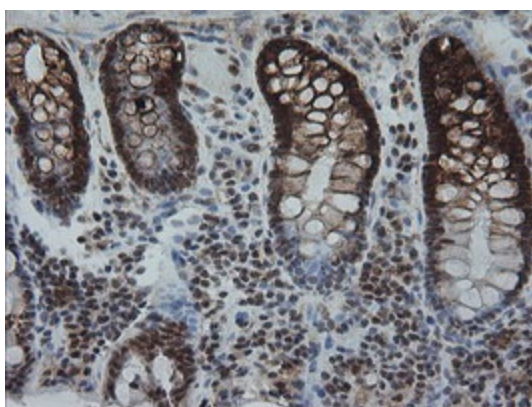
**Product images:**



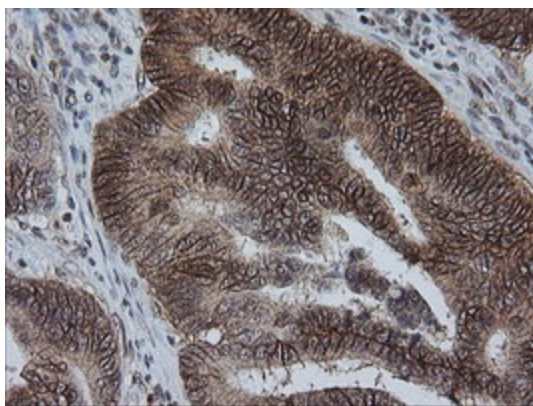
HEK293T cells were transfected with the pCMV6-ENTRY control (Cat# [PS100001], Left lane) or pCMV6-ENTRY KIF25 (Cat# [RC217730], Right lane) cDNA for 48 hrs and lysed. Equivalent amounts of cell lysates (5 ug per lane) were separated by SDS-PAGE and immunoblotted with anti-KIF25 (Cat# [TA505425]). Positive lysates [LY417362] (100ug) and [LC417362] (20ug) can be purchased separately from OriGene.



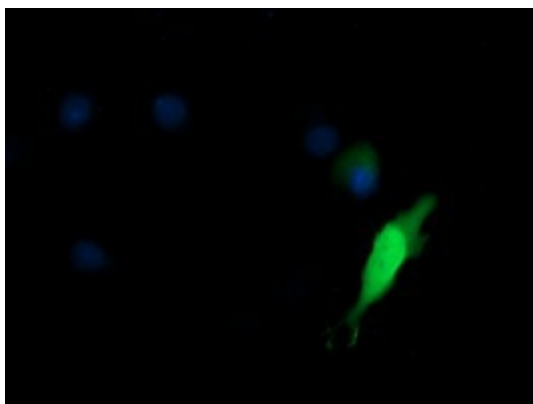
Western blot analysis of extracts (35ug) from 9 different cell lines by using anti-KIF25 monoclonal antibody (HepG2: human; HeLa: human; SVT2: mouse; A549: human; COS7: monkey; Jurkat: human; MDCK: canine; PC12: rat; MCF7: human).



Immunohistochemical staining of paraffin-embedded Human colon tissue within the normal limits using anti-KIF25 mouse monoclonal antibody. (Heat-induced epitope retrieval by 10mM citric buffer, pH6.0, 100°C for 10min, [TA505425])



Immunohistochemical staining of paraffin-embedded Adenocarcinoma of Human colon tissue using anti-KIF25 mouse monoclonal antibody. (Heat-induced epitope retrieval by 10mM citric buffer, pH6.0, 100°C for 10min, [TA505425])



Anti-KIF25 mouse monoclonal antibody ([TA505425]) immunofluorescent staining of COS7 cells transiently transfected by pCMV6-ENTRY KIF25 ([RC217730]).