

## Product datasheet for **TA505412BM**

### PTGES2 Mouse Monoclonal Antibody (HRP conjugated) [Clone ID: OTI2C3]

#### Product data:

Product Type:	Primary Antibodies
Clone Name:	OTI2C3
Applications:	IF, IHC, WB
Recommended Dilution:	WB 1:2000, IHC 1:150, IF 1:100
Reactivity:	Human
Host:	Mouse
Isotype:	IgG2a
Clonality:	Monoclonal
Immunogen:	Full length human recombinant protein of human PTGES2(NP_079348) produced in HEK293T cell.
Formulation:	PBS (pH 7.3) containing 1% BSA, 50% glycerol.
Concentration:	0.5 mg/ml
Purification:	Purified from mouse ascites fluids or tissue culture supernatant by affinity chromatography (protein A/G)
Conjugation:	HRP
Storage:	Store at -20°C as received.
Stability:	Stable for 12 months from date of receipt.
Predicted Protein Size:	41.8 kDa
Gene Name:	prostaglandin E synthase 2
Database Link:	<a href="#">NP_079348</a> <a href="#">Entrez Gene 80142 Human</a> <a href="#">Q9H7Z7</a>
Background:	The protein encoded by this gene is a membrane-associated prostaglandin E synthase, which catalyzes the conversion of prostaglandin H2 to prostaglandin E2. This protein also has been shown to activate the transcription regulated by a gamma-interferon-activated transcription element (GATE). Multiple transcript variants have been found for this gene. [provided by RefSeq]

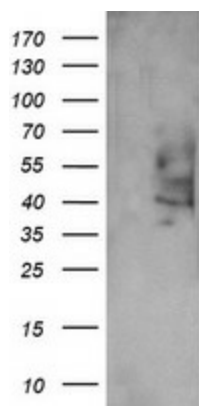


[View online »](#)

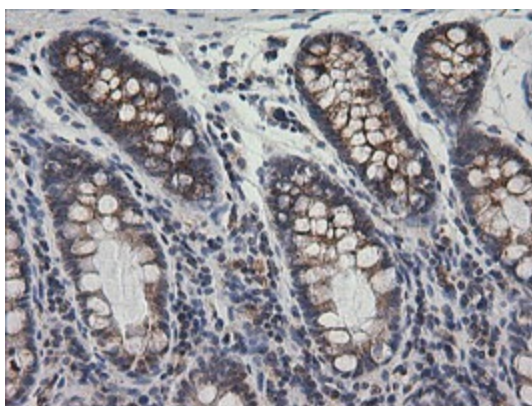
**Synonyms:** C9orf15; GBF-1; GBF1; mPGES-2; PGES2

**Protein Pathways:** Arachidonic acid metabolism, Metabolic pathways

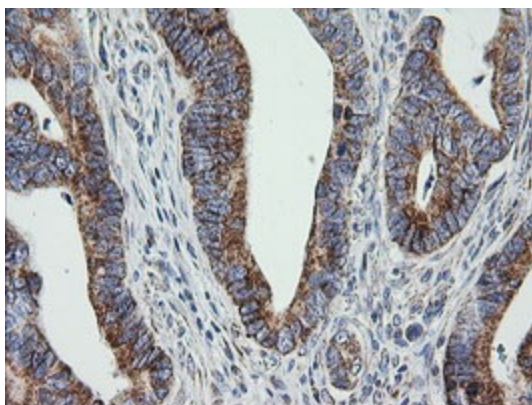
**Product images:**



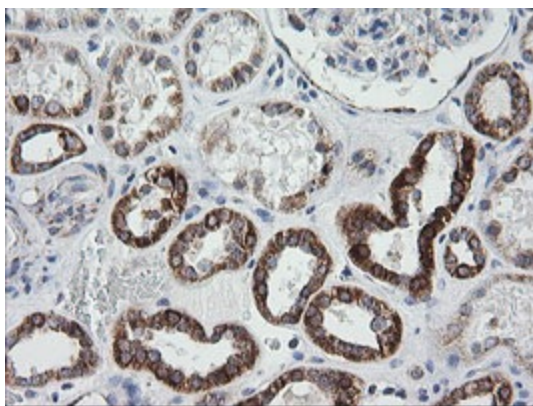
HEK293T cells were transfected with the pCMV6-ENTRY control (Cat# [PS100001], Left lane) or pCMV6-ENTRY PTGES2 (Cat# [RC221207], Right lane) cDNA for 48 hrs and lysed. Equivalent amounts of cell lysates (5 ug per lane) were separated by SDS-PAGE and immunoblotted with anti-PTGES2 (Cat# [TA505412]). Positive lysates [LY403045] (100ug) and [LC403045] (20ug) can be purchased separately from OriGene.



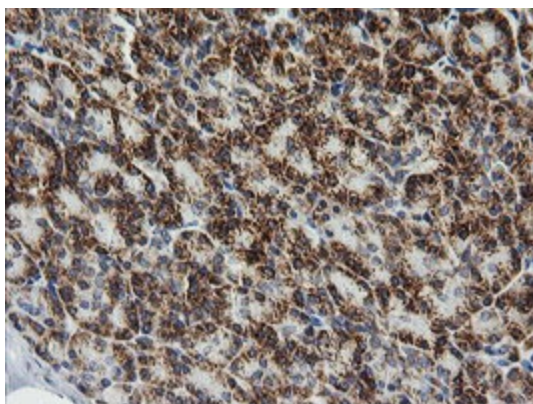
Immunohistochemical staining of paraffin-embedded Human colon tissue within the normal limits using anti-PTGES2 mouse monoclonal antibody. (Heat-induced epitope retrieval by 10mM citric buffer, pH6.0, 100°C for 10min, [TA505412])



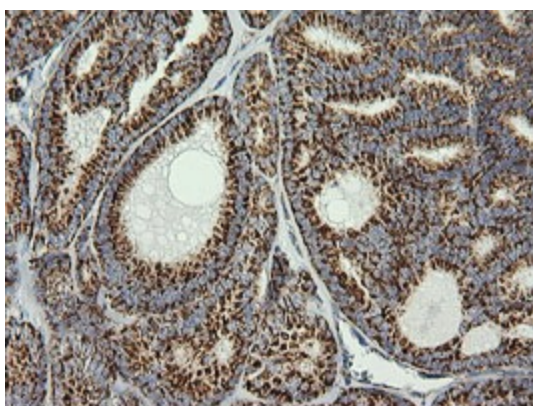
Immunohistochemical staining of paraffin-embedded Adenocarcinoma of Human colon tissue using anti-PTGES2 mouse monoclonal antibody. (Heat-induced epitope retrieval by 10mM citric buffer, pH6.0, 100°C for 10min, [TA505412])



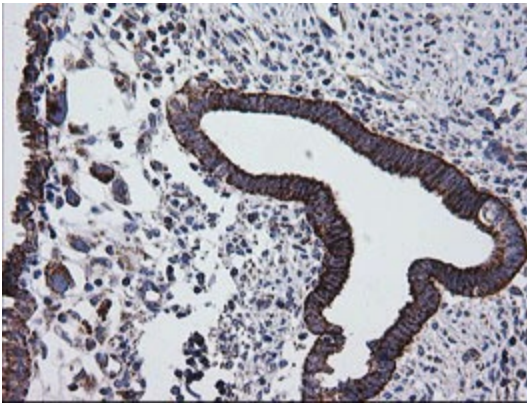
Immunohistochemical staining of paraffin-embedded Human Kidney tissue within the normal limits using anti-PTGES2 mouse monoclonal antibody. (Heat-induced epitope retrieval by 10mM citric buffer, pH6.0, 100°C for 10min, [TA505412])



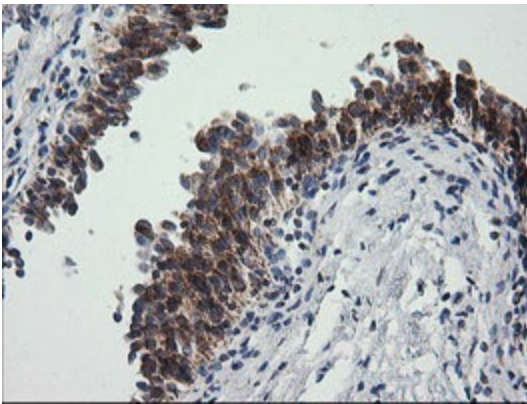
Immunohistochemical staining of paraffin-embedded Human pancreas tissue within the normal limits using anti-PTGES2 mouse monoclonal antibody. (Heat-induced epitope retrieval by 10mM citric buffer, pH6.0, 100°C for 10min, [TA505412])



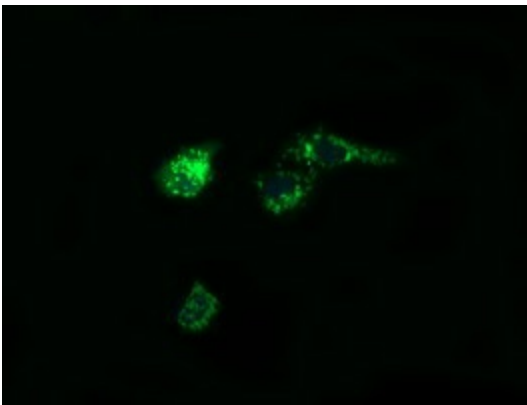
Immunohistochemical staining of paraffin-embedded Carcinoma of Human thyroid tissue using anti-PTGES2 mouse monoclonal antibody. (Heat-induced epitope retrieval by 10mM citric buffer, pH6.0, 100°C for 10min, [TA505412])



Immunohistochemical staining of paraffin-embedded Human endometrium tissue within the normal limits using anti-PTGES2 mouse monoclonal antibody. (Heat-induced epitope retrieval by 10mM citric buffer, pH6.0, 100°C for 10min, [TA505412])



Immunohistochemical staining of paraffin-embedded Human bladder tissue within the normal limits using anti-PTGES2 mouse monoclonal antibody. (Heat-induced epitope retrieval by 10mM citric buffer, pH6.0, 100°C for 10min, [TA505412])



Anti-PTGES2 mouse monoclonal antibody ([TA505412]) immunofluorescent staining of COS7 cells transiently transfected by pCMV6-ENTRY PTGES2 ([RC221207]).