

Product datasheet for **TA505410**

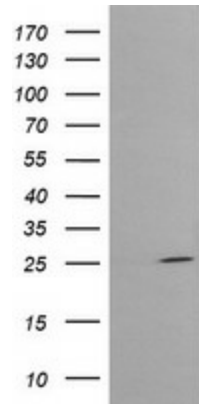
CMPK1 Mouse Monoclonal Antibody [Clone ID: OTI1D7]

Product data:

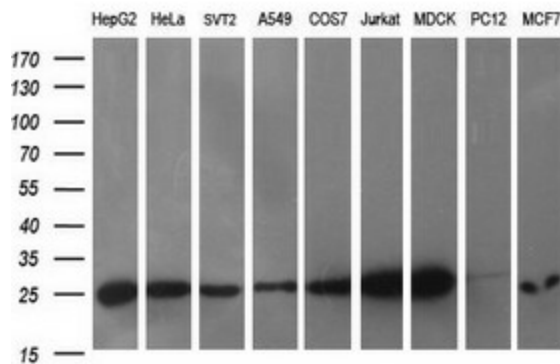
Product Type:	Primary Antibodies
Clone Name:	OTI1D7
Applications:	IF, IHC, WB
Recommended Dilution:	WB 1:2000, IHC 1:150, IF 1:100
Reactivity:	Human, Mouse, Rat
Host:	Mouse
Isotype:	IgG2a
Clonality:	Monoclonal
Immunogen:	Full length human recombinant protein of human CMPK1(NP_057392) produced in HEK293T cell.
Formulation:	PBS (PH 7.3) containing 1% BSA, 50% glycerol and 0.02% sodium azide.
Concentration:	1 mg/ml
Purification:	Purified from mouse ascites fluids or tissue culture supernatant by affinity chromatography (protein A/G)
Storage:	Store at -20°C as received.
Stability:	Stable for 12 months from date of receipt.
Predicted Protein Size:	25.7 kDa
Gene Name:	cytidine/uridine monophosphate kinase 1
Database Link:	<u>NP_057392</u> <u>Entrez Gene 66588</u> <u>MouseEntrez Gene 298410</u> <u>RatEntrez Gene 51727</u> <u>Human</u>
Background:	This gene encodes one of the enzymes required for cellular nucleic acid biosynthesis. This enzyme catalyzes the transfer of a phosphate group from ATP to CMP, UMP, or dCMP, to form the corresponding diphosphate nucleotide. Alternate splicing results in both coding and non-coding transcript variants. [provided by RefSeq, Feb 2012]
Synonyms:	CK; CMK; CMPK; UMK; UMP-CMPK; UMPK
Protein Families:	Druggable Genome
Protein Pathways:	Metabolic pathways, Pyrimidine metabolism



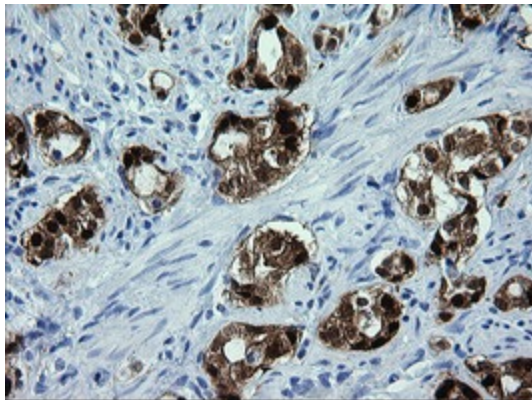
[View online »](#)

Product images:


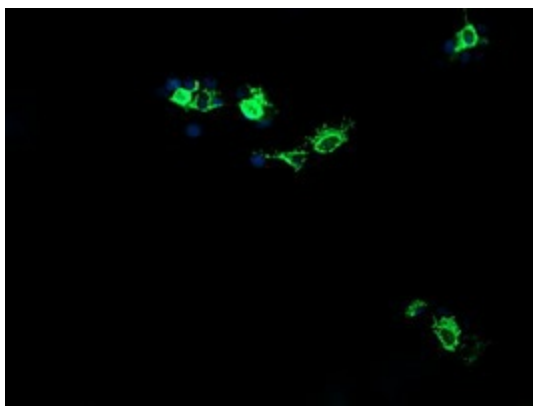
HEK293T cells were transfected with the pCMV6-ENTRY control (Left lane) or pCMV6-ENTRY CMPK1 ([RC204856], Right lane) cDNA for 48 hrs and lysed. Equivalent amounts of cell lysates (5 ug per lane) were separated by SDS-PAGE and immunoblotted with anti-CMPK1. Positive lysates [LY402539] (100ug) and [LC402539] (20ug) can be purchased separately from OriGene.



Western blot analysis of extracts (35ug) from 9 different cell lines by using anti-CMPK1 monoclonal antibody (HepG2: human; HeLa: human; SVT2: mouse; A549: human; COS7: monkey; Jurkat: human; MDCK: canine; PC12: rat; MCF7: human).



Immunohistochemical staining of paraffin-embedded Carcinoma of Human prostate tissue using anti-CMPK1 mouse monoclonal antibody. (Heat-induced epitope retrieval by 10mM citric buffer, pH6.0, 120°C for 3min, TA505410)



Anti-CMPK1 mouse monoclonal antibody (TA505410) immunofluorescent staining of COS7 cells transiently transfected by pCMV6-ENTRY CMPK1 ([RC204856]).