

## Product datasheet for **TA505406S**

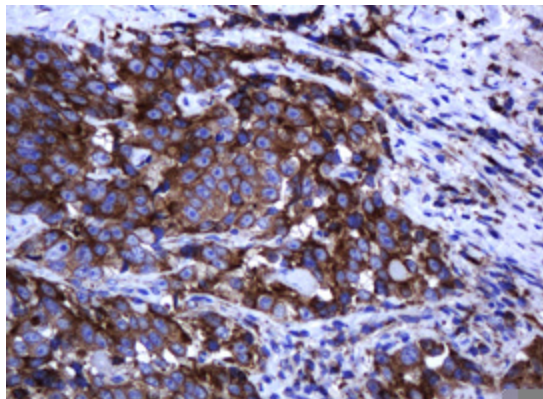
### ARMC1 Mouse Monoclonal Antibody [Clone ID: OTI2E5]

#### Product data:

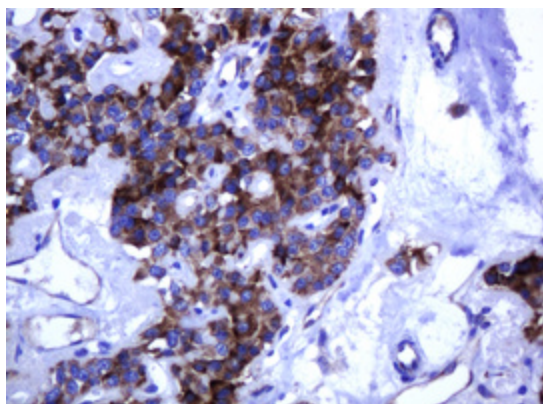
Product Type:	Primary Antibodies
Clone Name:	OTI2E5
Applications:	IHC
Recommended Dilution:	IHC 1:150
Reactivity:	Human, Mouse, Rat
Host:	Mouse
Isotype:	IgG2a
Clonality:	Monoclonal
Immunogen:	Full length human recombinant protein of human ARMC1(NP_060590) produced in HEK293T cell.
Formulation:	PBS (pH 7.3) containing 1% BSA, 50% glycerol and 0.02% sodium azide.
Concentration:	1 mg/ml
Purification:	Purified from mouse ascites fluids or tissue culture supernatant by affinity chromatography (protein A/G)
Conjugation:	Unconjugated
Storage:	Store at -20°C as received.
Stability:	Stable for 12 months from date of receipt.
Predicted Protein Size:	31.1 kDa
Gene Name:	armadillo repeat containing 1
Database Link:	<a href="#">NP_060590</a> <a href="#">Entrez Gene 55156 Human</a> <a href="#">Q9NVT9</a>
Synonyms:	Arcp



[View online »](#)

**Product images:**

Immunohistochemical staining of paraffin-embedded Adenocarcinoma of Human colon tissue using anti-ARMC1 mouse monoclonal antibody. (Heat-induced epitope retrieval by 10mM citric buffer, pH6.0, 120°C for 3min, [TA505406])



Immunohistochemical staining of paraffin-embedded Carcinoma of Human pancreas tissue using anti-ARMC1 mouse monoclonal antibody. (Heat-induced epitope retrieval by 10mM citric buffer, pH6.0, 120°C for 3min, [TA505406])