

Product datasheet for **TA505405**

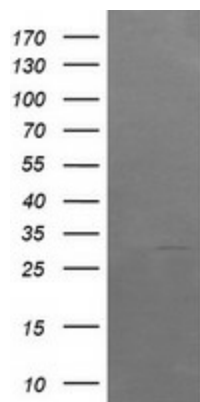
ARMC1 Mouse Monoclonal Antibody [Clone ID: OTI1D10]

Product data:

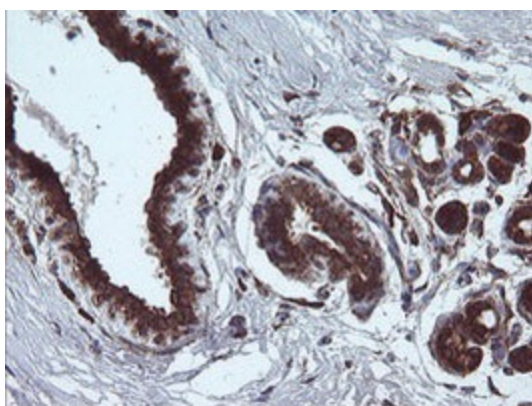
Product Type:	Primary Antibodies
Clone Name:	OTI1D10
Applications:	IF, IHC, WB
Recommended Dilution:	WB 1:1000, IHC 1:150, IF 1:100
Reactivity:	Human, Mouse, Rat
Host:	Mouse
Isotype:	IgG2a
Clonality:	Monoclonal
Immunogen:	Full length human recombinant protein of human ARMC1(NP_060590) produced in HEK293T cell.
Formulation:	PBS (pH 7.3) containing 1% BSA, 50% glycerol and 0.02% sodium azide.
Concentration:	1 mg/ml
Purification:	Purified from mouse ascites fluids or tissue culture supernatant by affinity chromatography (protein A/G)
Conjugation:	Unconjugated
Storage:	Store at -20°C as received.
Stability:	Stable for 12 months from date of receipt.
Predicted Protein Size:	31.1 kDa
Gene Name:	armadillo repeat containing 1
Database Link:	NP_060590 Entrez Gene 55156 Human Q9NVT9
Synonyms:	Arcp



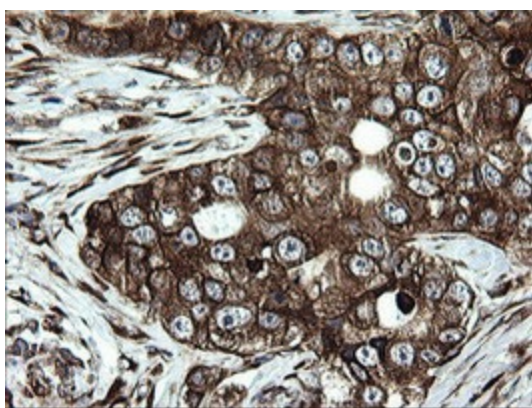
[View online »](#)

Product images:


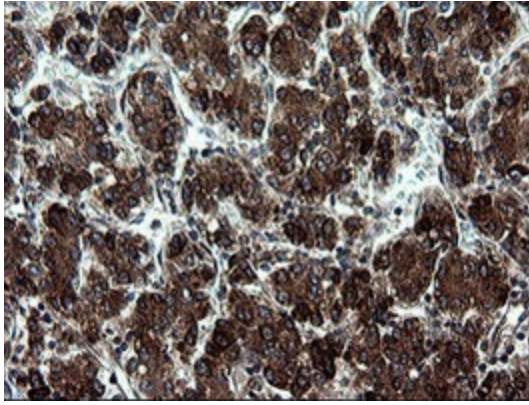
HEK293T cells were transfected with the pCMV6-ENTRY control (Cat# [PS100001], Left lane) or pCMV6-ENTRY ARMC1 (Cat# [RC200135], Right lane) cDNA for 48 hrs and lysed. Equivalent amounts of cell lysates (5 ug per lane) were separated by SDS-PAGE and immunoblotted with anti-ARMC1 (Cat# TA505405). Positive lysates [LY413306] (100ug) and [LC413306] (20ug) can be purchased separately from OriGene.



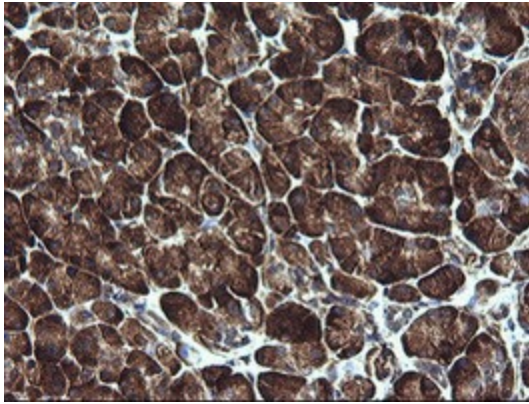
Immunohistochemical staining of paraffin-embedded Human breast tissue within the normal limits using anti-ARMC1 mouse monoclonal antibody. (Heat-induced epitope retrieval by 10mM citric buffer, pH6.0, 120°C for 3min, TA505405)



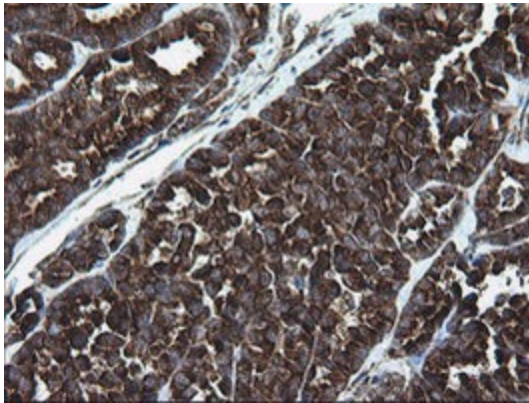
Immunohistochemical staining of paraffin-embedded Adenocarcinoma of Human breast tissue using anti-ARMC1 mouse monoclonal antibody. (Heat-induced epitope retrieval by 10mM citric buffer, pH6.0, 120°C for 3min, TA505405)



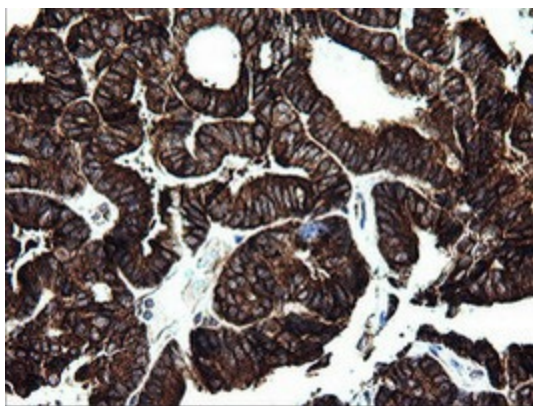
Immunohistochemical staining of paraffin-embedded Carcinoma of Human liver tissue using anti-ARMC1 mouse monoclonal antibody. (Heat-induced epitope retrieval by 10mM citric buffer, pH6.0, 120°C for 3min, TA505405)



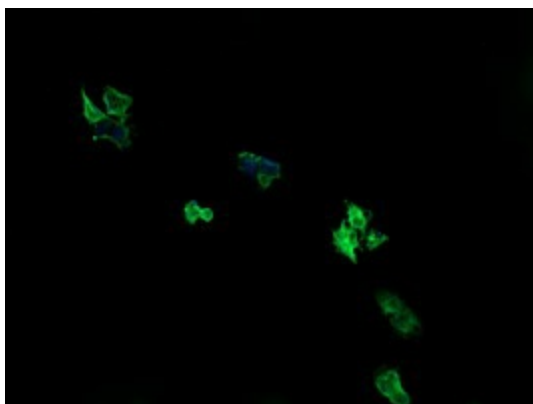
Immunohistochemical staining of paraffin-embedded Human pancreas tissue within the normal limits using anti-ARMC1 mouse monoclonal antibody. (Heat-induced epitope retrieval by 10mM citric buffer, pH6.0, 120°C for 3min, TA505405)



Immunohistochemical staining of paraffin-embedded Carcinoma of Human thyroid tissue using anti-ARMC1 mouse monoclonal antibody. (Heat-induced epitope retrieval by 10mM citric buffer, pH6.0, 120°C for 3min, TA505405)



Immunohistochemical staining of paraffin-embedded Adenocarcinoma of Human endometrium tissue using anti-ARMC1 mouse monoclonal antibody. (Heat-induced epitope retrieval by 10mM citric buffer, pH6.0, 120°C for 3min, TA505405)



Anti-ARMC1 mouse monoclonal antibody (TA505405) immunofluorescent staining of COS7 cells transiently transfected by pCMV6-ENTRY ARMC1 ([RC200135]).