

## Product datasheet for **TA505391S**

### ETS2 Mouse Monoclonal Antibody [Clone ID: OTI2A3]

#### Product data:

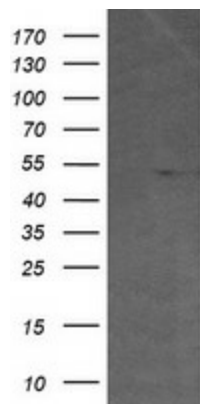
|                         |                                                                                                                                                                                                                                                                                                                                                                                             |
|-------------------------|---------------------------------------------------------------------------------------------------------------------------------------------------------------------------------------------------------------------------------------------------------------------------------------------------------------------------------------------------------------------------------------------|
| Product Type:           | Primary Antibodies                                                                                                                                                                                                                                                                                                                                                                          |
| Clone Name:             | OTI2A3                                                                                                                                                                                                                                                                                                                                                                                      |
| Applications:           | IF, IHC, WB                                                                                                                                                                                                                                                                                                                                                                                 |
| Recommended Dilution:   | WB 1:2000, IHC 1:150, IF 1:100                                                                                                                                                                                                                                                                                                                                                              |
| Reactivity:             | Human, Mouse, Rat                                                                                                                                                                                                                                                                                                                                                                           |
| Host:                   | Mouse                                                                                                                                                                                                                                                                                                                                                                                       |
| Isotype:                | IgG1                                                                                                                                                                                                                                                                                                                                                                                        |
| Clonality:              | Monoclonal                                                                                                                                                                                                                                                                                                                                                                                  |
| Immunogen:              | Human recombinant protein fragment corresponding to amino acids 90-349 of human ETS2(NP_005230) produced in E.coli.                                                                                                                                                                                                                                                                         |
| Formulation:            | PBS (pH 7.3) containing 1% BSA, 50% glycerol and 0.02% sodium azide.                                                                                                                                                                                                                                                                                                                        |
| Concentration:          | 1 mg/ml                                                                                                                                                                                                                                                                                                                                                                                     |
| Purification:           | Purified from mouse ascites fluids or tissue culture supernatant by affinity chromatography (protein A/G)                                                                                                                                                                                                                                                                                   |
| Conjugation:            | Unconjugated                                                                                                                                                                                                                                                                                                                                                                                |
| Storage:                | Store at -20°C as received.                                                                                                                                                                                                                                                                                                                                                                 |
| Stability:              | Stable for 12 months from date of receipt.                                                                                                                                                                                                                                                                                                                                                  |
| Predicted Protein Size: | 52.8 kDa                                                                                                                                                                                                                                                                                                                                                                                    |
| Gene Name:              | ETS proto-oncogene 2, transcription factor                                                                                                                                                                                                                                                                                                                                                  |
| Database Link:          | <a href="#">NP_005230</a><br><a href="#">Entrez Gene 23872 Mouse</a> <a href="#">Entrez Gene 304063 Rat</a> <a href="#">Entrez Gene 2114 Human</a><br><a href="#">P15036</a>                                                                                                                                                                                                                |
| Background:             | ETS transcriptions factors, such as ETS2, regulate numerous genes and are involved in stem cell development, cell senescence and death, and tumorigenesis. The conserved ETS domain within these proteins is a winged helix-turn-helix DNA-binding domain that recognizes the core consensus DNA sequence GGAA/T of target genes (Dwyer et al., 2007 [PubMed 17986575]). [supplied by OMIM] |



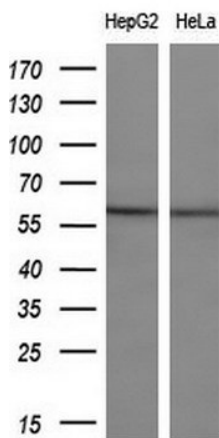
[View online »](#)

**Synonyms:** ETS2IT1  
**Protein Families:** Druggable Genome, Transcription Factors  
**Protein Pathways:** Dorso-ventral axis formation

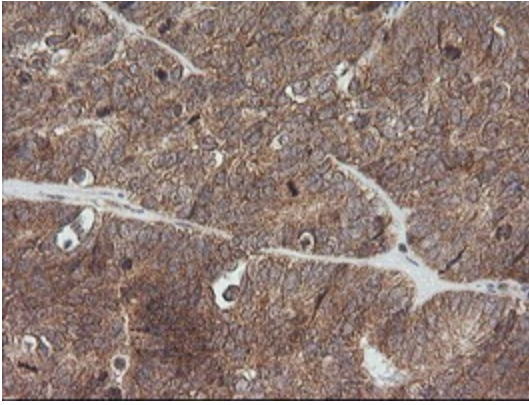
**Product images:**



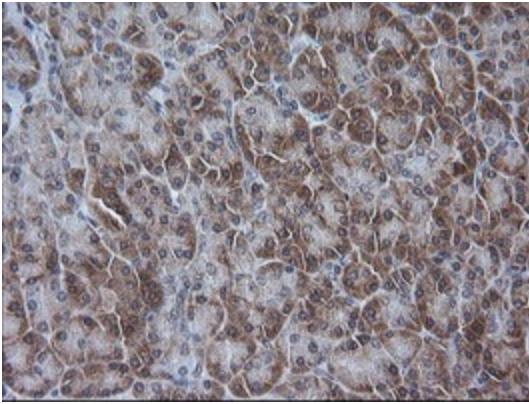
HEK293T cells were transfected with the pCMV6-ENTRY control (Left lane) or pCMV6-ENTRY ETS2 ([RC207377], Right lane) cDNA for 48 hrs and lysed. Equivalent amounts of cell lysates (5 ug per lane) were separated by SDS-PAGE and immunoblotted with anti-ETS2. Positive lysates [LY401607] (100ug) and [LC401607] (20ug) can be purchased separately from OriGene.



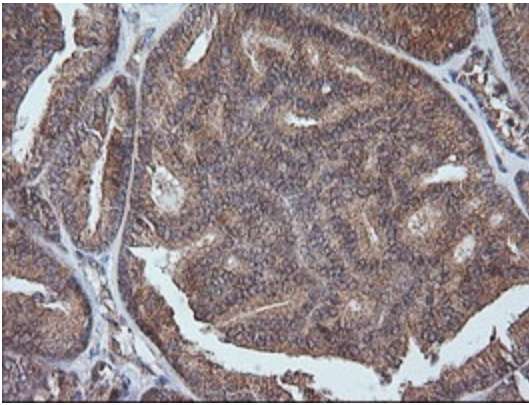
Western blot analysis of extracts (10ug) from 2 different cell lines by using anti-ETS2 monoclonal antibody (1:200).



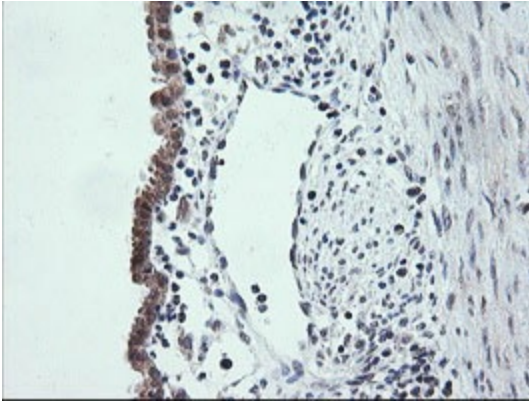
Immunohistochemical staining of paraffin-embedded Adenocarcinoma of Human ovary tissue using anti-ETS2 mouse monoclonal antibody. (Heat-induced epitope retrieval by 10mM citric buffer, pH6.0, 100°C for 10min, [TA505391])



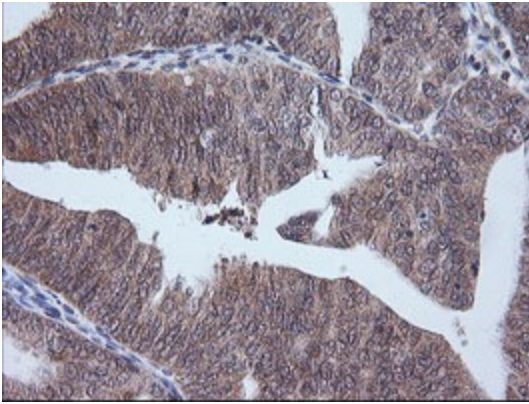
Immunohistochemical staining of paraffin-embedded Human pancreas tissue within the normal limits using anti-ETS2 mouse monoclonal antibody. (Heat-induced epitope retrieval by 10mM citric buffer, pH6.0, 100°C for 10min, [TA505391])



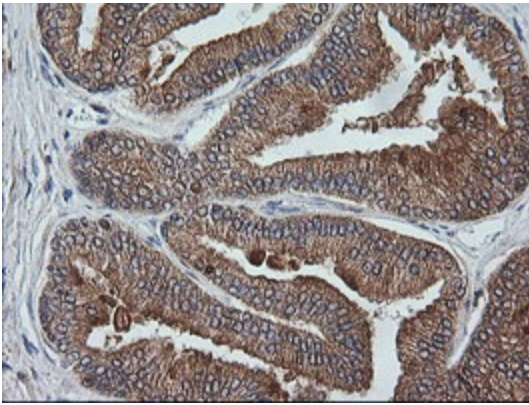
Immunohistochemical staining of paraffin-embedded Carcinoma of Human thyroid tissue using anti-ETS2 mouse monoclonal antibody. (Heat-induced epitope retrieval by 10mM citric buffer, pH6.0, 100°C for 10min, [TA505391])



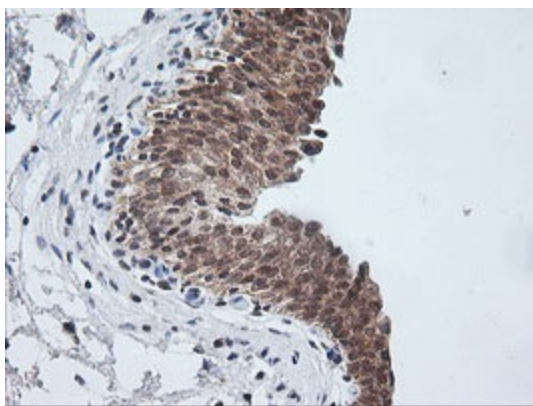
Immunohistochemical staining of paraffin-embedded Human endometrium tissue within the normal limits using anti-ETS2 mouse monoclonal antibody. (Heat-induced epitope retrieval by 10mM citric buffer, pH6.0, 100°C for 10min, [TA505391])



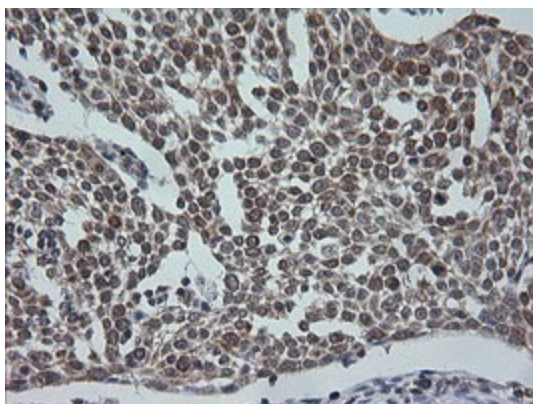
Immunohistochemical staining of paraffin-embedded Adenocarcinoma of Human endometrium tissue using anti-ETS2 mouse monoclonal antibody. (Heat-induced epitope retrieval by 10mM citric buffer, pH6.0, 100°C for 10min, [TA505391])



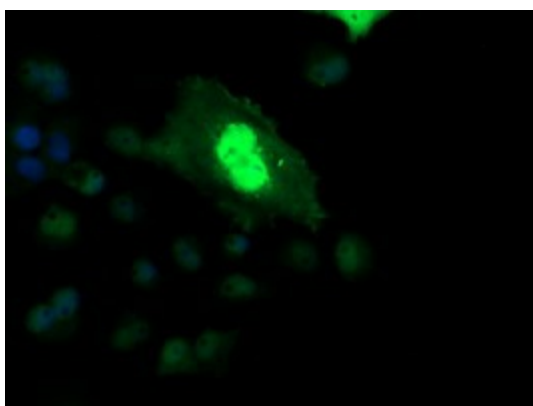
Immunohistochemical staining of paraffin-embedded Human prostate tissue within the normal limits using anti-ETS2 mouse monoclonal antibody. (Heat-induced epitope retrieval by 10mM citric buffer, pH6.0, 100°C for 10min, [TA505391])



Immunohistochemical staining of paraffin-embedded Human bladder tissue within the normal limits using anti-ETS2 mouse monoclonal antibody. (Heat-induced epitope retrieval by 10mM citric buffer, pH6.0, 100°C for 10min, [TA505391])



Immunohistochemical staining of paraffin-embedded Carcinoma of Human bladder tissue using anti-ETS2 mouse monoclonal antibody. (Heat-induced epitope retrieval by 10mM citric buffer, pH6.0, 100°C for 10min, [TA505391])



Anti-ETS2 mouse monoclonal antibody ([TA505391]) immunofluorescent staining of COS7 cells transiently transfected by pCMV6-ENTRY ETS2 ([RC207377]).