

Product datasheet for **TA505389AM**

CMPK1 Mouse Monoclonal Antibody (Biotin conjugated) [Clone ID: OTI1A1]

Product data:

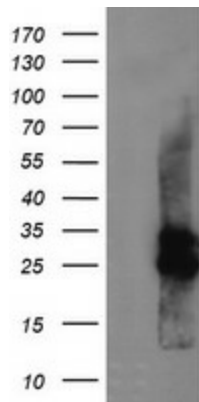
Product Type:	Primary Antibodies
Clone Name:	OTI1A1
Applications:	IF, IHC, WB
Recommended Dilution:	WB 1:2000, IHC 1:150, IF 1:100
Reactivity:	Human, Mouse, Rat
Host:	Mouse
Isotype:	IgG2b
Clonality:	Monoclonal
Immunogen:	Full length human recombinant protein of human CMPK1(NP_057392) produced in HEK293T cell.
Formulation:	PBS (pH 7.3) containing 1% BSA, 50% glycerol and 0.02% sodium azide.
Concentration:	0.5 mg/ml
Purification:	Purified from mouse ascites fluids or tissue culture supernatant by affinity chromatography (protein A/G)
Conjugation:	Biotin
Storage:	Store at -20°C as received.
Stability:	Stable for 12 months from date of receipt.
Predicted Protein Size:	25.7 kDa
Gene Name:	cytidine/uridine monophosphate kinase 1
Database Link:	NP_057392 Entrez Gene 66588 Mouse Entrez Gene 298410 Rat Entrez Gene 51727 Human P30085
Background:	Uridine monophosphate (UMP)/cytidine monophosphate (CMP) kinase (EC 2.7.4.4) catalyzes the phosphoryl transfer from ATP to UMP, CMP, and deoxy-CMP (dCMP), resulting in the formation of ADP and the corresponding nucleoside diphosphate. These nucleoside diphosphates are required for cellular nucleic acid synthesis (Liou et al., 2002 [PubMed 11912132]). [supplied by OMIM]



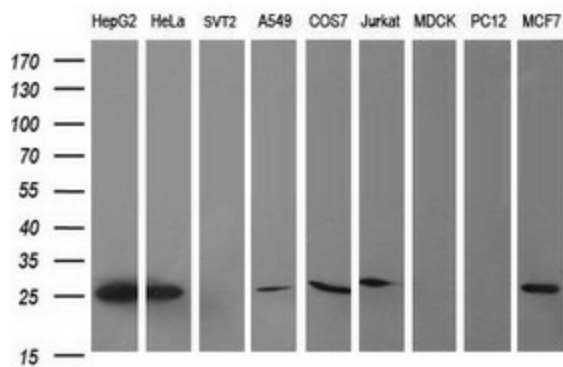
[View online »](#)

Synonyms: CK; CMK; CMPK; UMK; UMP-CMPK; UMPK
Protein Families: Druggable Genome
Protein Pathways: Metabolic pathways, Pyrimidine metabolism

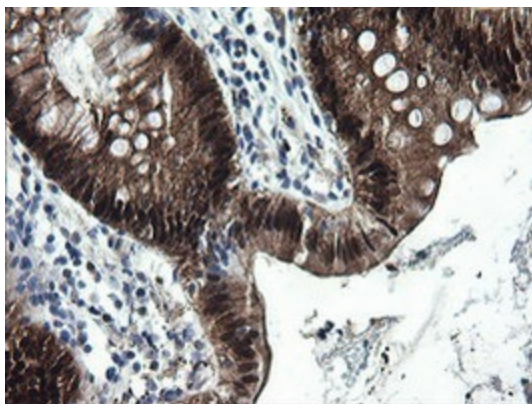
Product images:



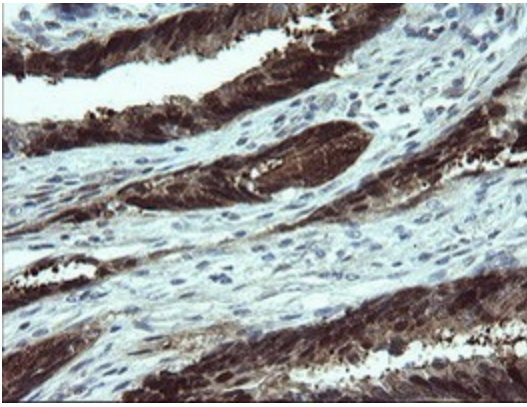
HEK293T cells were transfected with the pCMV6-ENTRY control (Left lane) or pCMV6-ENTRY CMPK1 ([RC204856], Right lane) cDNA for 48 hrs and lysed. Equivalent amounts of cell lysates (5 ug per lane) were separated by SDS-PAGE and immunoblotted with anti-CMPK1. Positive lysates [LY402539] (100ug) and [LC402539] (20ug) can be purchased separately from OriGene.



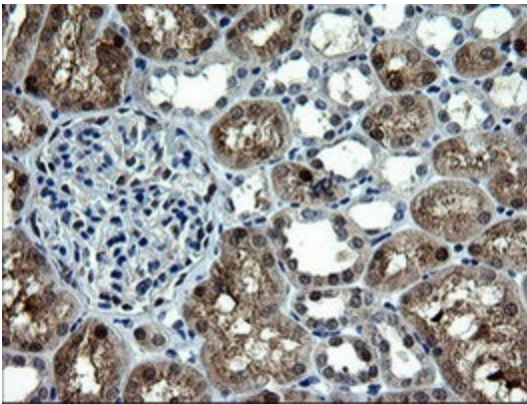
Western blot analysis of extracts (35ug) from 9 different cell lines by using anti-CMPK1 monoclonal antibody (HepG2: human; HeLa: human; SVT2: mouse; A549: human; COS7: monkey; Jurkat: human; MDCK: canine; PC12: rat; MCF7: human).



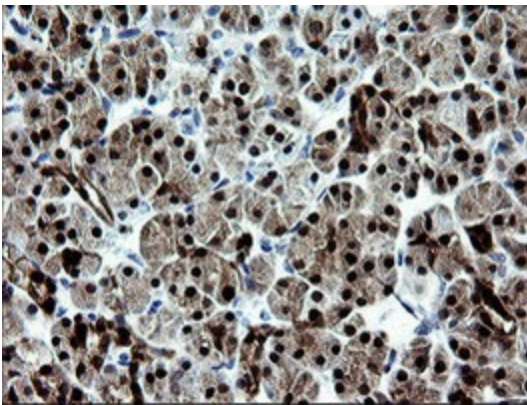
Immunohistochemical staining of paraffin-embedded Human colon tissue within the normal limits using anti-CMPK1 mouse monoclonal antibody. (Heat-induced epitope retrieval by 10mM citric buffer, pH6.0, 100°C for 10min, [TA505389])



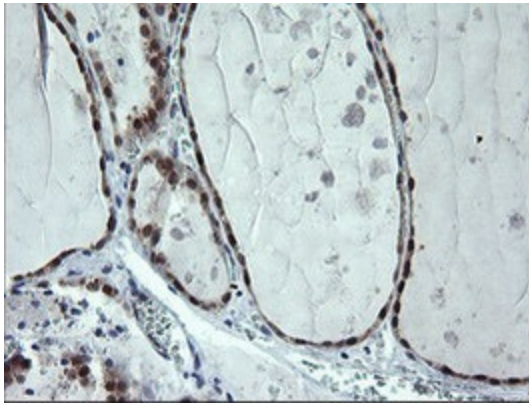
Immunohistochemical staining of paraffin-embedded Adenocarcinoma of Human colon tissue using anti-CMPK1 mouse monoclonal antibody. (Heat-induced epitope retrieval by 10mM citric buffer, pH6.0, 100°C for 10min, [TA505389])



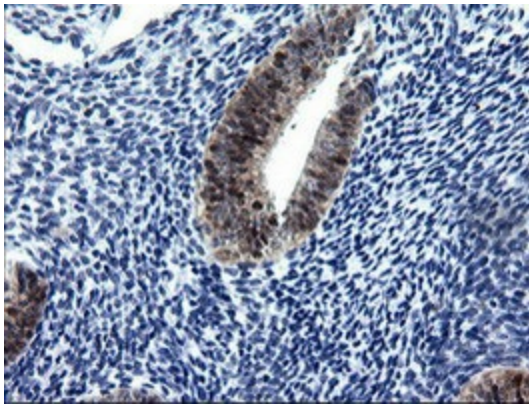
Immunohistochemical staining of paraffin-embedded Human Kidney tissue within the normal limits using anti-CMPK1 mouse monoclonal antibody. (Heat-induced epitope retrieval by 10mM citric buffer, pH6.0, 100°C for 10min, [TA505389])



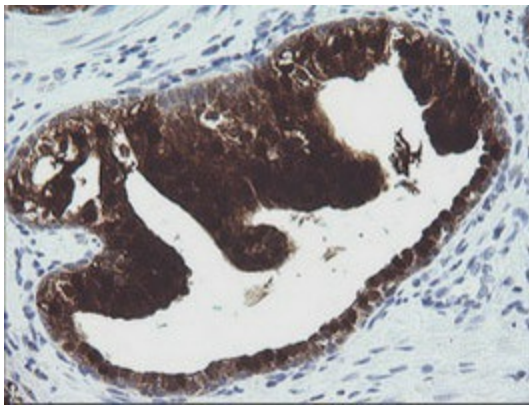
Immunohistochemical staining of paraffin-embedded Human pancreas tissue within the normal limits using anti-CMPK1 mouse monoclonal antibody. (Heat-induced epitope retrieval by 10mM citric buffer, pH6.0, 100°C for 10min, [TA505389])



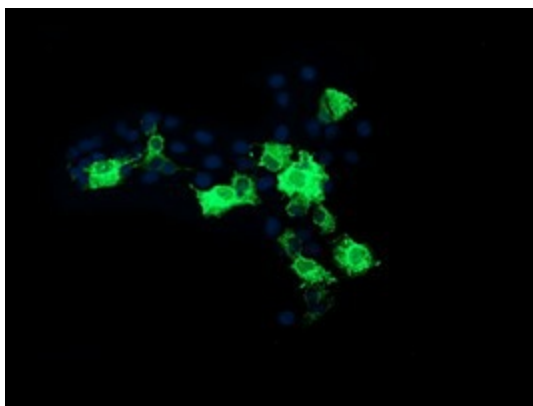
Immunohistochemical staining of paraffin-embedded Human thyroid tissue within the normal limits using anti-CMPK1 mouse monoclonal antibody. (Heat-induced epitope retrieval by 10mM citric buffer, pH6.0, 100°C for 10min, [TA505389])



Immunohistochemical staining of paraffin-embedded Human endometrium tissue within the normal limits using anti-CMPK1 mouse monoclonal antibody. (Heat-induced epitope retrieval by 10mM citric buffer, pH6.0, 100°C for 10min, [TA505389])



Immunohistochemical staining of paraffin-embedded Carcinoma of Human prostate tissue using anti-CMPK1 mouse monoclonal antibody. (Heat-induced epitope retrieval by 10mM citric buffer, pH6.0, 100°C for 10min, [TA505389])



Anti-CMPK1 mouse monoclonal antibody ([TA505389]) immunofluorescent staining of COS7 cells transiently transfected by pCMV6-ENTRY CMPK1 ([RC204856]).