

## Product datasheet for **TA505385BM**

### CD1C Mouse Monoclonal Antibody (HRP conjugated) [Clone ID: OTI2D4]

#### Product data:

Product Type:	Primary Antibodies
Clone Name:	OTI2D4
Applications:	IF, IHC, WB
Recommended Dilution:	WB 1:500~2000, IHC 1:150, IF 1:100
Reactivity:	Human
Host:	Mouse
Isotype:	IgG1
Clonality:	Monoclonal
Immunogen:	Full length human recombinant protein of human CD1C(NP_001756) produced in HEK293T cell.
Formulation:	PBS (pH 7.3) containing 1% BSA, 50% glycerol.
Concentration:	0.5 mg/ml
Purification:	Purified from mouse ascites fluids or tissue culture supernatant by affinity chromatography (protein A/G)
Conjugation:	HRP
Storage:	Store at -20°C as received.
Stability:	Stable for 12 months from date of receipt.
Predicted Protein Size:	35.7 kDa
Gene Name:	CD1c molecule
Database Link:	<a href="#">NP_001756</a> <a href="#">Entrez Gene 911 Human</a> <a href="#">P29017</a>



[View online »](#)

**Background:**

This gene encodes a member of the CD1 family of transmembrane glycoproteins, which are structurally related to the major histocompatibility complex (MHC) proteins and form heterodimers with beta-2-microglobulin. The CD1 proteins mediate the presentation of primarily lipid and glycolipid antigens of self or microbial origin to T cells. The human genome contains five CD1 family genes organized in a cluster on chromosome 1. The CD1 family members are thought to differ in their cellular localization and specificity for particular lipid ligands. The protein encoded by this gene is broadly distributed throughout the endocytic system via a tyrosine-based motif in the cytoplasmic tail. Alternatively spliced transcript variants of this gene have been observed, but their full-length nature is not known. [provided by RefSeq]

**Synonyms:**

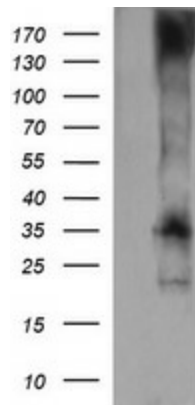
BDCA1; CD1; CD1A; R7

**Protein Families:**

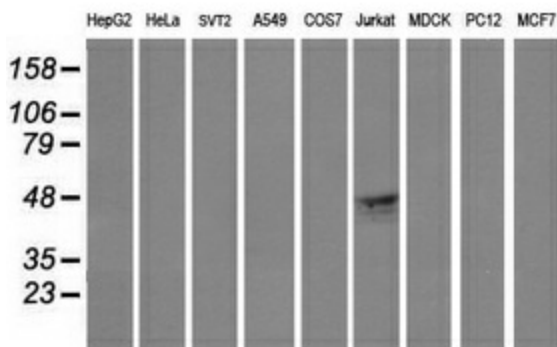
Druggable Genome, Transmembrane

**Protein Pathways:**

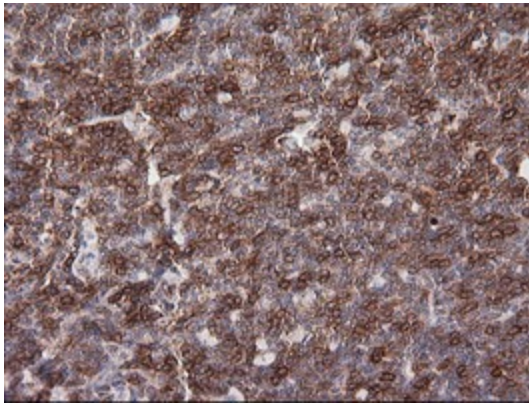
Hematopoietic cell lineage

**Product images:**


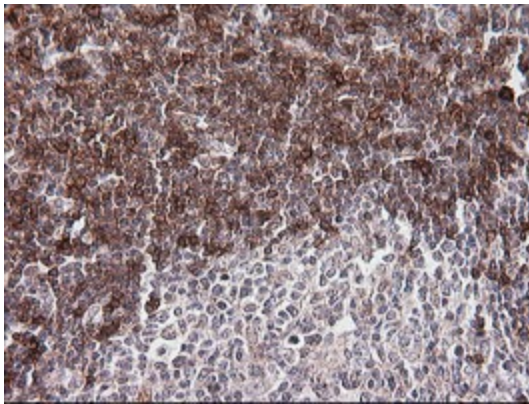
HEK293T cells were transfected with the pCMV6-ENTRY control (Left lane) or pCMV6-ENTRY CD1C ([RC218490], Right lane) cDNA for 48 hrs and lysed. Equivalent amounts of cell lysates (5 ug per lane) were separated by SDS-PAGE and immunoblotted with anti-CD1C. Positive lysates [LY419762] (100ug) and [LC419762] (20ug) can be purchased separately from OriGene.



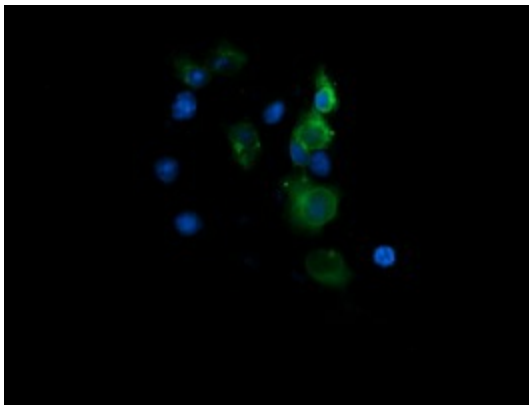
Western blot analysis of extracts (35ug) from 9 different cell lines by using anti-CD1C monoclonal antibody (HepG2: human; HeLa: human; SVT2: mouse; A549: human; COS7: monkey; Jurkat: human; MDCK: canine; PC12: rat; MCF7: human).



Immunohistochemical staining of paraffin-embedded Human lymphoma tissue using anti-CD1C mouse monoclonal antibody. (Heat-induced epitope retrieval by 10mM citric buffer, pH6.0, 100°C for 10min, [TA505385])



Immunohistochemical staining of paraffin-embedded Human tonsil within the normal limits using anti-CD1C mouse monoclonal antibody. (Heat-induced epitope retrieval by 10mM citric buffer, pH6.0, 100°C for 10min, [TA505385])



Anti-CD1C mouse monoclonal antibody ([TA505385]) immunofluorescent staining of COS7 cells transiently transfected by pCMV6-ENTRY CD1C ([RC218490]).