

Product datasheet for **TA505383**

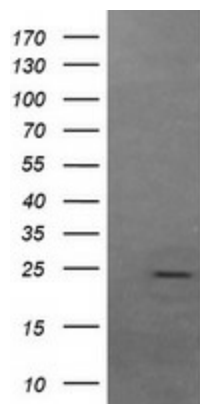
FATE1 Mouse Monoclonal Antibody [Clone ID: OTI7B5]

Product data:

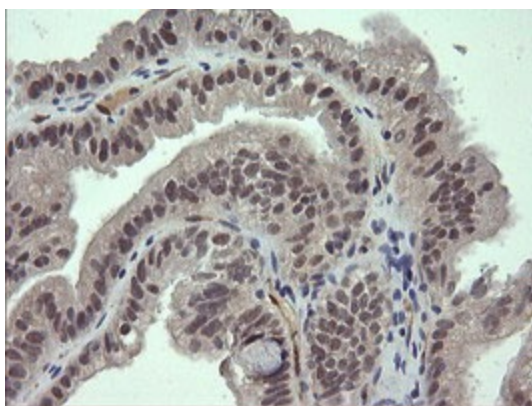
Product Type:	Primary Antibodies
Clone Name:	OTI7B5
Applications:	IF, IHC, WB
Recommended Dilution:	WB 1:2000, IHC 1:150, IF 1:100
Reactivity:	Human
Host:	Mouse
Isotype:	IgG1
Clonality:	Monoclonal
Immunogen:	Full length human recombinant protein of human FATE1(NP_055814) produced in HEK293T cell.
Formulation:	PBS (pH 7.3) containing 1% BSA, 50% glycerol and 0.02% sodium azide.
Concentration:	1 mg/ml
Purification:	Purified from mouse ascites fluids or tissue culture supernatant by affinity chromatography (protein A/G)
Conjugation:	Unconjugated
Storage:	Store at -20°C as received.
Stability:	Stable for 12 months from date of receipt.
Predicted Protein Size:	20.5 kDa
Gene Name:	fetal and adult testis expressed 1
Database Link:	NP_149076 Entrez Gene 89885 Human Q969F0
Background:	RAB21 belongs to the RAB family of small GTP-binding proteins that regulate intracellular vesicle targeting (Opdam et al., 2000 [PubMed 10887961]). [supplied by OMIM, Nov 2008]
Synonyms:	CT43; FATE
Protein Families:	Transmembrane



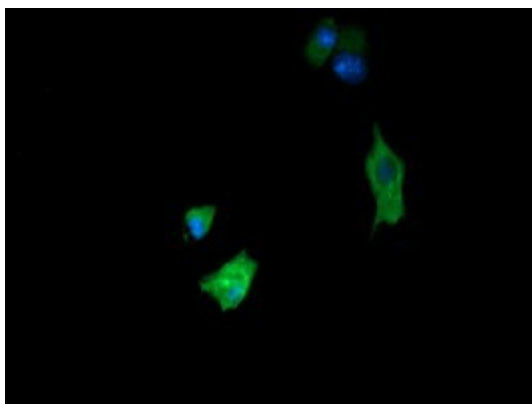
[View online »](#)

Product images:

HEK293T cells were transfected with the pCMV6-ENTRY control (Left lane) or pCMV6-ENTRY FATE1 ([RC205951], Right lane) cDNA for 48 hrs and lysed. Equivalent amounts of cell lysates (5 ug per lane) were separated by SDS-PAGE and immunoblotted with anti-FATE1. Positive lysates [LY409735] (100ug) and [LC409735] (20ug) can be purchased separately from OriGene.



Immunohistochemical staining of paraffin-embedded Adenocarcinoma of Human ovary tissue using anti-FATE1 mouse monoclonal antibody. (Heat-induced epitope retrieval by 10mM citric buffer, pH6.0, 120°C for 3min, TA505383)



Anti-FATE1 mouse monoclonal antibody (TA505383) immunofluorescent staining of COS7 cells transiently transfected by pCMV6-ENTRY FATE1 ([RC205951]).