

Product datasheet for **TA505382BM**

EGR2 Mouse Monoclonal Antibody (HRP conjugated) [Clone ID: OTI1B12]

Product data:

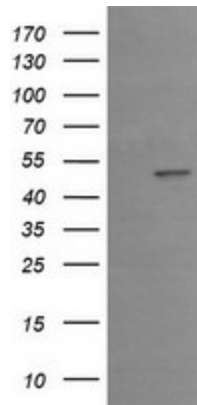
Product Type:	Primary Antibodies
Clone Name:	OTI1B12
Applications:	IF, IHC, WB
Recommended Dilution:	WB: 1:500, IHC: 1:150, IF: 1:50-1:100
Reactivity:	Human, Mouse, Rat
Host:	Mouse
Isotype:	IgG1
Clonality:	Monoclonal
Immunogen:	Human recombinant protein fragment corresponding to amino acids 156-476 of human EGR2(NP_000390) produced in E.coli.
Formulation:	PBS (pH 7.4) containing 1% BSA, 50% glycerol.
Concentration:	0.5 mg/ml
Purification:	Purified from mouse ascites fluids or tissue culture supernatant by affinity chromatography (protein A/G)
Conjugation:	HRP
Storage:	Store at -20°C as received.
Stability:	Stable for 12 months from date of receipt.
Predicted Protein Size:	50.1 kDa
Gene Name:	early growth response 2
Database Link:	NP_000390 Entrez Gene 13654 Mouse Entrez Gene 114090 Rat Entrez Gene 1959 Human P11161
Background:	The protein encoded by this gene is a transcription factor with three tandem C2H2-type zinc fingers. Defects in this gene are associated with Charcot-Marie-Tooth disease type 1D (CMT1D), Charcot-Marie-Tooth disease type 4E (CMT4E), and with Dejerine-Sottas syndrome (DSS). Multiple transcript variants encoding two different isoforms have been found for this gene. [provided by RefSeq, Oct 2008]



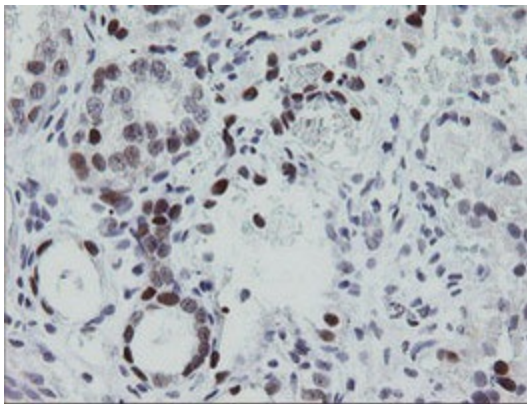
[View online »](#)

Synonyms: AT591; CMT1D; CMT4E; KROX20
Protein Families: Druggable Genome, Transcription Factors

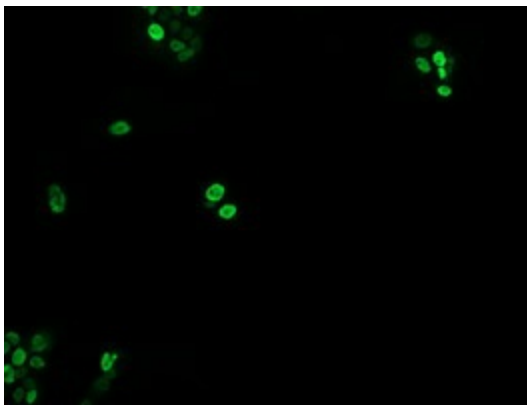
Product images:



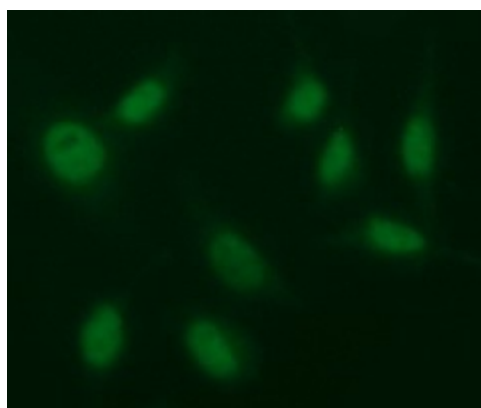
HEK293T cells were transfected with the pCMV6-ENTRY control (Cat# [PS100001], Left lane) or pCMV6-ENTRY EGR2 (Cat# [RC212183], Right lane) cDNA for 48 hrs and lysed. Equivalent amounts of cell lysates (5 ug per lane) were separated by SDS-PAGE and immunoblotted with anti-EGR2 (Cat# [TA505382]). Positive lysates [LY424742] (100ug) and [LC424742] (20ug) can be purchased separately from OriGene.



Immunohistochemical staining of paraffin-embedded Adenocarcinoma of Human ovary tissue using anti-EGR2 mouse monoclonal antibody. (Heat-induced epitope retrieval by 10mM citric buffer, pH6.0, 120°C for 3min, [TA505382])



Anti-EGR2 mouse monoclonal antibody ([TA505382]) immunofluorescent staining of COS7 cells transiently transfected by pCMV6-ENTRY EGR2 ([RC212183]).



Immunofluorescent staining of HeLa cells using anti-EGR2 mouse monoclonal antibody (TA505382) at 1:100 (1:100)