

## Product datasheet for TA505382

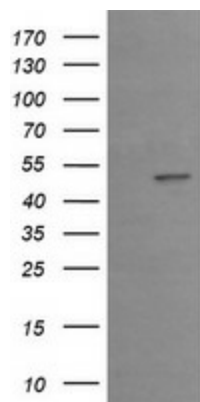
### EGR2 Mouse Monoclonal Antibody [Clone ID: OTI1B12]

#### Product data:

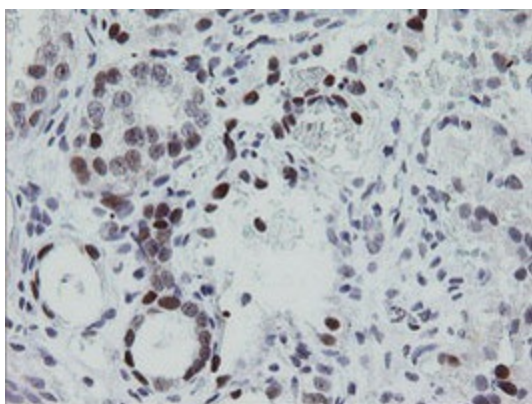
Product Type:	Primary Antibodies
Clone Name:	OTI1B12
Applications:	IF, IHC, WB
Recommended Dilution:	WB: 1:500, IHC: 1:150, IF: 1:50-1:100
Reactivity:	Human, Mouse, Rat
Host:	Mouse
Isotype:	IgG1
Clonality:	Monoclonal
Immunogen:	Human recombinant protein fragment corresponding to amino acids 156-476 of human EGR2(NP_000390) produced in E.coli.
Formulation:	PBS (PH 7.3) containing 1% BSA, 50% glycerol and 0.02% sodium azide.
Concentration:	1 mg/ml
Purification:	Purified from mouse ascites fluids or tissue culture supernatant by affinity chromatography (protein A/G)
Storage:	Store at -20°C as received.
Stability:	Stable for 12 months from date of receipt.
Predicted Protein Size:	50.1 kDa
Gene Name:	early growth response 2
Database Link:	<a href="#">NP_000390 Entrez Gene</a> <a href="#">13654 MouseEntrez Gene</a> <a href="#">114090 RatEntrez Gene</a> <a href="#">1959 Human</a>
Background:	The protein encoded by this gene is a transcription factor with three tandem C2H2-type zinc fingers. Defects in this gene are associated with Charcot-Marie-Tooth disease type 1D (CMT1D), Charcot-Marie-Tooth disease type 4E (CMT4E), and with Dejerine-Sottas syndrome (DSS). Multiple transcript variants encoding two different isoforms have been found for this gene. [provided by RefSeq, Oct 2008]
Synonyms:	AT591; CMT1D; CMT4E; KROX20
Protein Families:	Druggable Genome, Transcription Factors



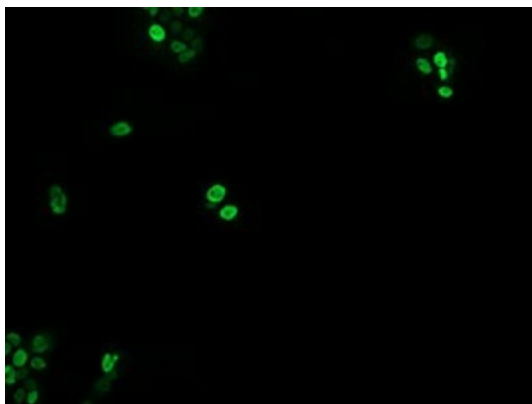
[View online »](#)

**Product images:**

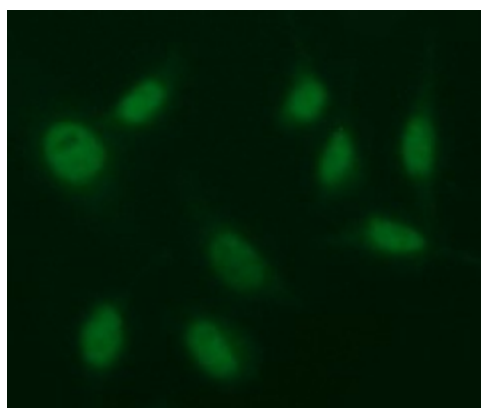
HEK293T cells were transfected with the pCMV6-ENTRY control (Left lane) or pCMV6-ENTRY EGR2 ([RC212183], Right lane) cDNA for 48 hrs and lysed. Equivalent amounts of cell lysates (5 ug per lane) were separated by SDS-PAGE and immunoblotted with anti-EGR2 (TA505382). Positive lysates [LY424742] (100ug) and [LC424742] (20ug) can be purchased separately from OriGene.



Immunohistochemical staining of paraffin-embedded Adenocarcinoma of Human ovary tissue using anti-EGR2 mouse monoclonal antibody. (Heat-induced epitope retrieval by 10mM citric buffer, pH6.0, 120°C for 3min, TA505382)



Anti-EGR2 mouse monoclonal antibody (TA505382) immunofluorescent staining of COS7 cells transiently transfected by pCMV6-ENTRY EGR2 ([RC212183]).



Immunofluorescent staining of HeLa cells using anti-EGR2 mouse monoclonal antibody (TA505382) at 1:100 (1:100)