

## Product datasheet for **TA505376BM**

### **CMPK1 Mouse Monoclonal Antibody (HRP conjugated) [Clone ID: OTI2B2]**

#### **Product data:**

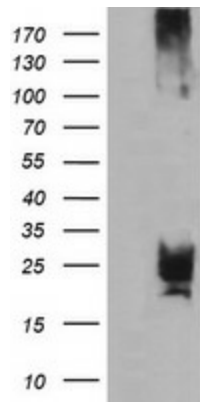
<b>Product Type:</b>	Primary Antibodies
<b>Clone Name:</b>	OTI2B2
<b>Applications:</b>	IF, IHC, WB
<b>Recommended Dilution:</b>	WB 1:2000, IHC 1:150, IF 1:100
<b>Reactivity:</b>	Human, Mouse, Rat
<b>Host:</b>	Mouse
<b>Isotype:</b>	IgG1
<b>Clonality:</b>	Monoclonal
<b>Immunogen:</b>	Full length human recombinant protein of human CMPK1(NP_057392) produced in HEK293T cell.
<b>Formulation:</b>	PBS (pH 7.3) containing 1% BSA, 50% glycerol.
<b>Concentration:</b>	0.5 mg/ml
<b>Purification:</b>	Purified from mouse ascites fluids or tissue culture supernatant by affinity chromatography (protein A/G)
<b>Conjugation:</b>	HRP
<b>Storage:</b>	Store at -20°C as received.
<b>Stability:</b>	Stable for 12 months from date of receipt.
<b>Predicted Protein Size:</b>	25.7 kDa
<b>Gene Name:</b>	cytidine/uridine monophosphate kinase 1
<b>Database Link:</b>	<a href="#">NP_057392</a> <a href="#">Entrez Gene 66588 Mouse</a> <a href="#">Entrez Gene 298410 Rat</a> <a href="#">Entrez Gene 51727 Human</a> <a href="#">P30085</a>
<b>Background:</b>	Uridine monophosphate (UMP)/cytidine monophosphate (CMP) kinase (EC 2.7.4.4) catalyzes the phosphoryl transfer from ATP to UMP, CMP, and deoxy-CMP (dCMP), resulting in the formation of ADP and the corresponding nucleoside diphosphate. These nucleoside diphosphates are required for cellular nucleic acid synthesis (Liou et al., 2002 [PubMed 11912132]). [supplied by OMIM]



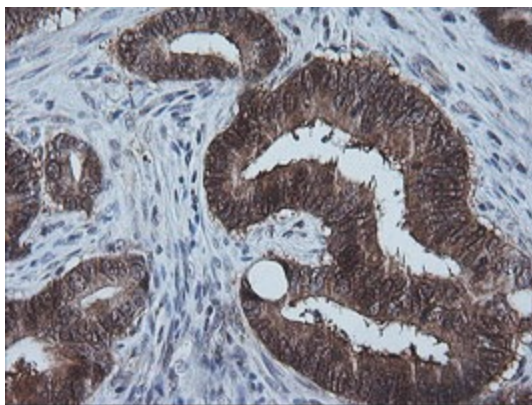
[View online »](#)

**Synonyms:** CK; CMK; CMPK; UMK; UMP-CMPK; UMPK  
**Protein Families:** Druggable Genome  
**Protein Pathways:** Metabolic pathways, Pyrimidine metabolism

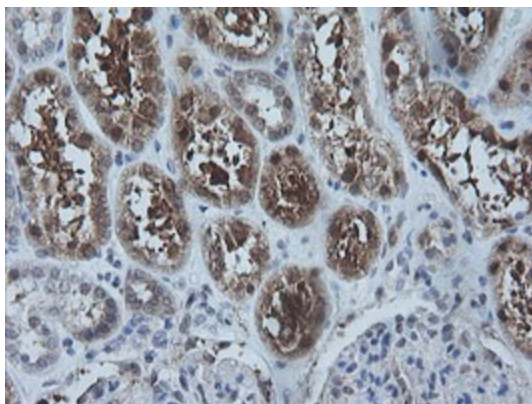
### Product images:



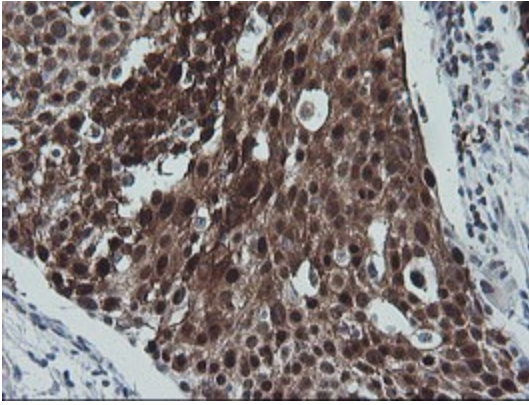
HEK293T cells were transfected with the pCMV6-ENTRY control (Left lane) or pCMV6-ENTRY CMPK1 ([RC204856], Right lane) cDNA for 48 hrs and lysed. Equivalent amounts of cell lysates (5 ug per lane) were separated by SDS-PAGE and immunoblotted with anti-CMPK1. Positive lysates [LY402539] (100ug) and [LC402539] (20ug) can be purchased separately from OriGene.



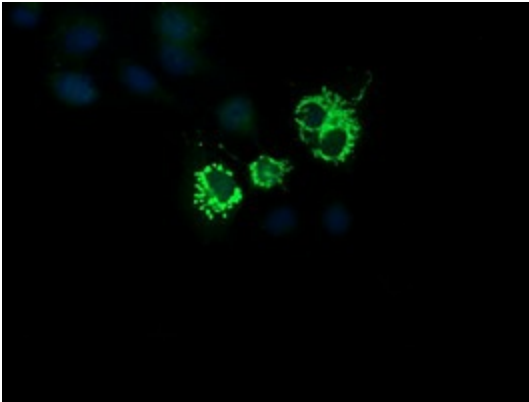
Immunohistochemical staining of paraffin-embedded Adenocarcinoma of Human colon tissue using anti-CMPK1 mouse monoclonal antibody. (Heat-induced epitope retrieval by 10mM citric buffer, pH6.0, 100°C for 10min, [TA505376])



Immunohistochemical staining of paraffin-embedded Human Kidney tissue within the normal limits using anti-CMPK1 mouse monoclonal antibody. (Heat-induced epitope retrieval by 10mM citric buffer, pH6.0, 100°C for 10min, [TA505376])



Immunohistochemical staining of paraffin-embedded Carcinoma of Human bladder tissue using anti-CMPK1 mouse monoclonal antibody. (Heat-induced epitope retrieval by 10mM citric buffer, pH6.0, 100°C for 10min, [TA505376])



Anti-CMPK1 mouse monoclonal antibody ([TA505376]) immunofluorescent staining of COS7 cells transiently transfected by pCMV6-ENTRY CMPK1 ([RC204856]).