

Product datasheet for **TA505368AM**

TSC22D3 Mouse Monoclonal Antibody (Biotin conjugated) [Clone ID: OTI1E11]

Product data:

Product Type:	Primary Antibodies
Clone Name:	OTI1E11
Applications:	IF, WB
Recommended Dilution:	WB 1:2000, IHC 1:100, IF 1:100
Reactivity:	Human, Mouse
Host:	Mouse
Isotype:	IgG1
Clonality:	Monoclonal
Immunogen:	Full length human recombinant protein of human TSC22D3(NP_004080) produced in HEK293T cell.
Formulation:	PBS (pH 7.3) containing 1% BSA, 50% glycerol and 0.02% sodium azide.
Concentration:	0.5 mg/ml
Purification:	Purified from mouse ascites fluids or tissue culture supernatant by affinity chromatography (protein A/G)
Conjugation:	Biotin
Storage:	Store at -20°C as received.
Stability:	Stable for 12 months from date of receipt.
Predicted Protein Size:	14.6 kDa
Gene Name:	TSC22 domain family member 3
Database Link:	NP_004080 Entrez Gene 14605 Mouse Entrez Gene 1831 Human Q99576
Background:	The protein encoded by this gene shares significant sequence identity with the murine TSC-22 and Drosophila shs, both of which are leucine zipper proteins, that function as transcriptional regulators. The expression of this gene is stimulated by glucocorticoids and interleukin 10, and it appears to play a key role in the anti-inflammatory and immunosuppressive effects of this steroid and chemokine. Transcript variants encoding different isoforms have been identified for this gene. [provided by RefSeq]

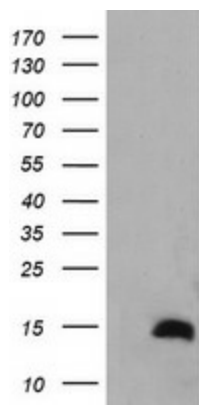


[View online »](#)

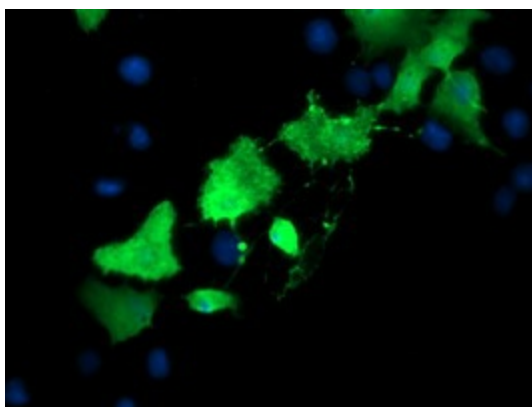
Synonyms: DIP; DSIPI; GILZ; TSC-22R

Protein Families: Transcription Factors

Product images:



HEK293T cells were transfected with the pCMV6-ENTRY control (Left lane) or pCMV6-ENTRY TSC22D3 ([RC210088], Right lane) cDNA for 48 hrs and lysed. Equivalent amounts of cell lysates (5 ug per lane) were separated by SDS-PAGE and immunoblotted with anti-TSC22D3. Positive lysates [LY418232] (100ug) and [LC418232] (20ug) can be purchased separately from OriGene.



Anti-TSC22D3 mouse monoclonal antibody ([TA505368]) immunofluorescent staining of COS7 cells transiently transfected by pCMV6-ENTRY TSC22D3 ([RC210088]).