

## Product datasheet for **TA505349**

### PPIL3 Mouse Monoclonal Antibody [Clone ID: OTI2E7]

#### Product data:

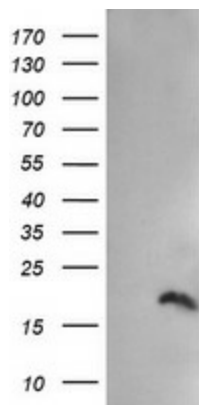
Product Type:	Primary Antibodies
Clone Name:	OTI2E7
Applications:	IF, IHC, WB
Recommended Dilution:	WB 1:2000, IHC 1:150, IF 1:100
Reactivity:	Human, Mouse, Rat
Host:	Mouse
Isotype:	IgG1
Clonality:	Monoclonal
Immunogen:	Full length human recombinant protein of human PPIL3(NP_572028) produced in E.coli.
Formulation:	PBS (pH 7.3) containing 1% BSA, 50% glycerol and 0.02% sodium azide.
Concentration:	1 mg/ml
Purification:	Purified from mouse ascites fluids or tissue culture supernatant by affinity chromatography (protein A/G)
Conjugation:	Unconjugated
Storage:	Store at -20°C as received.
Stability:	Stable for 12 months from date of receipt.
Predicted Protein Size:	18 kDa
Gene Name:	peptidylprolyl isomerase like 3
Database Link:	<a href="#">NP_572028</a> <a href="#">Entrez Gene 70225 Mouse</a> <a href="#">Entrez Gene 301432 Rat</a> <a href="#">Entrez Gene 53938 Human</a> <a href="#">Q9H2H8</a>
Background:	This gene encodes a member of the cyclophilin family. Cyclophilins catalyze the cis-trans isomerization of peptidylprolyl imide bonds in oligopeptides. They have been proposed to act either as catalysts or as molecular chaperones in protein-folding events. Alternative splicing results in multiple transcript variants. [provided by RefSeq]



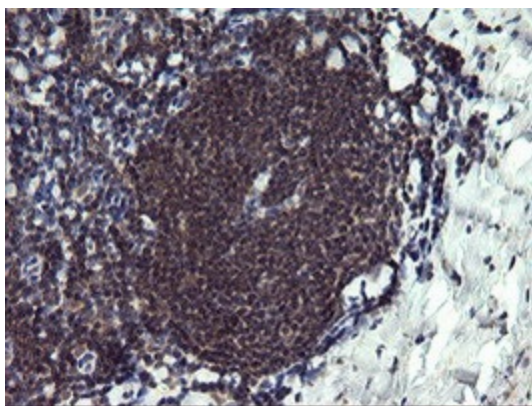
[View online »](#)

**Synonyms:** cyclophilin-like protein 3; cyclophilin J; CYPJ; peptidylprolyl cis-trans isomerase-like protein 3; peptidylprolyl isomerase (cyclophilin)-like 3; peptidylprolyl isomerase-like 3; PPIase-like protein 3

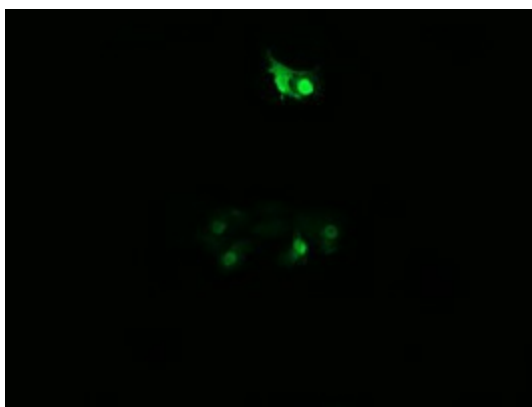
**Product images:**



HEK293T cells were transfected with the pCMV6-ENTRY control (Cat# [PS100001], Left lane) or pCMV6-ENTRY PPIL3 (Cat# [RC217389], Right lane) cDNA for 48 hrs and lysed. Equivalent amounts of cell lysates (5 ug per lane) were separated by SDS-PAGE and immunoblotted with anti-PPIL3 (Cat# TA505349). Positive lysates [LY408889] (100ug) and [LC408889] (20ug) can be purchased separately from OriGene.



Immunohistochemical staining of paraffin-embedded Human tonsil within the normal limits using anti-PPIL3 mouse monoclonal antibody. (Heat-induced epitope retrieval by 10mM citric buffer, pH6.0, 100°C for 10min, TA505349)



Anti-PPIL3 mouse monoclonal antibody (TA505349) immunofluorescent staining of COS7 cells transiently transfected by pCMV6-ENTRY PPIL3 ([RC217389]).