

Product datasheet for **TA505344**

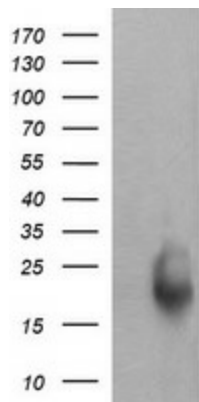
RAB30 Mouse Monoclonal Antibody [Clone ID: OTI3E7]

Product data:

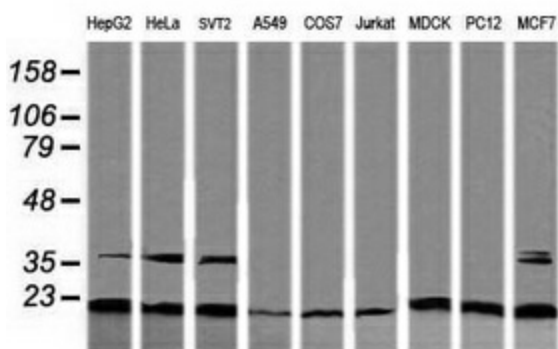
Product Type:	Primary Antibodies
Clone Name:	OTI3E7
Applications:	IF, IHC, WB
Recommended Dilution:	WB 1:200, IHC 1:150, IF 1:100
Reactivity:	Human, Dog, Rat, Monkey, Mouse
Host:	Mouse
Isotype:	IgG2a
Clonality:	Monoclonal
Immunogen:	Full length human recombinant protein of human RAB30(NP_055303) produced in HEK293T cell.
Formulation:	PBS (pH 7.3) containing 1% BSA, 50% glycerol and 0.02% sodium azide.
Concentration:	1 mg/ml
Purification:	Purified from mouse ascites fluids or tissue culture supernatant by affinity chromatography (protein A/G)
Conjugation:	Unconjugated
Storage:	Store at -20°C as received.
Stability:	Stable for 12 months from date of receipt.
Predicted Protein Size:	22.9 kDa
Gene Name:	RAB30, member RAS oncogene family
Database Link:	NP_055303 Entrez Gene 75985 Mouse Entrez Gene 308821 Rat Entrez Gene 476787 Dog Entrez Gene 701550 Monkey Entrez Gene 27314 Human Q15771
Synonyms:	member RAS oncogene family; RAB30
Protein Families:	Druggable Genome



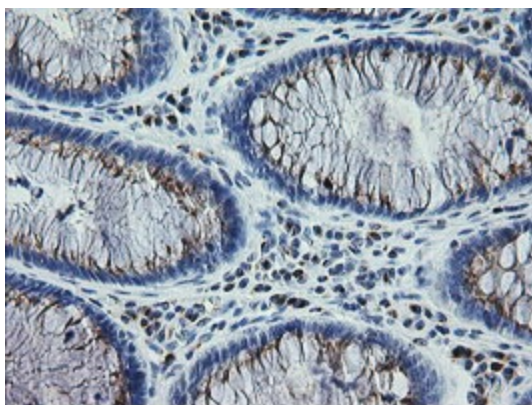
[View online »](#)

Product images:


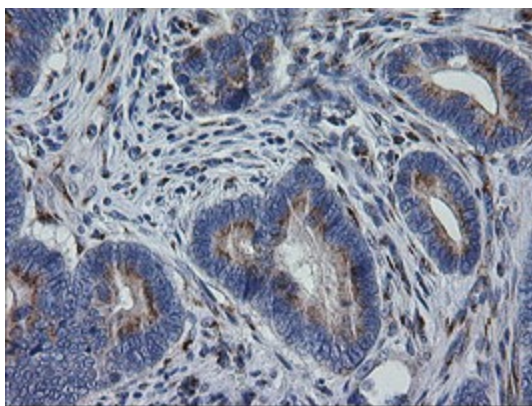
HEK293T cells were transfected with the pCMV6-ENTRY control (Cat# [PS100001], Left lane) or pCMV6-ENTRY RAB30 (Cat# [RC204318], Right lane) cDNA for 48 hrs and lysed. Equivalent amounts of cell lysates (5 ug per lane) were separated by SDS-PAGE and immunoblotted with anti-RAB30(Cat# TA505344). Positive lysates [LY415246] (100ug) and [LC415246] (20ug) can be purchased separately from OriGene.



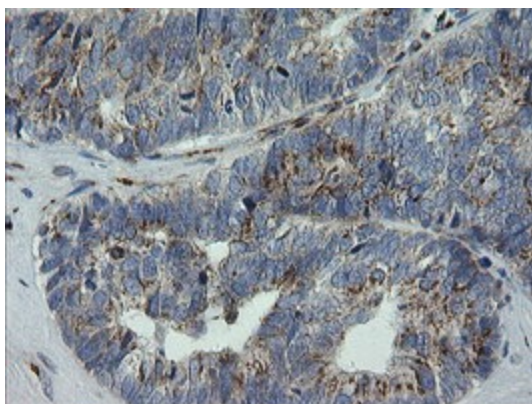
Western blot analysis of extracts (35ug) from 9 different cell lines by using anti-RAB30 monoclonal antibody (HepG2: human; HeLa: human; SVT2: mouse; A549: human; COS7: monkey; Jurkat: human; MDCK: canine; PC12: rat; MCF7: human).



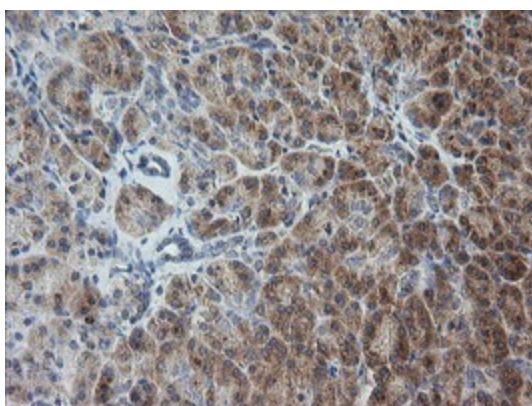
Immunohistochemical staining of paraffin-embedded Human colon tissue within the normal limits using anti-RAB30 mouse monoclonal antibody. (Heat-induced epitope retrieval by 10mM citric buffer, pH6.0, 120°C for 3min, TA505344)



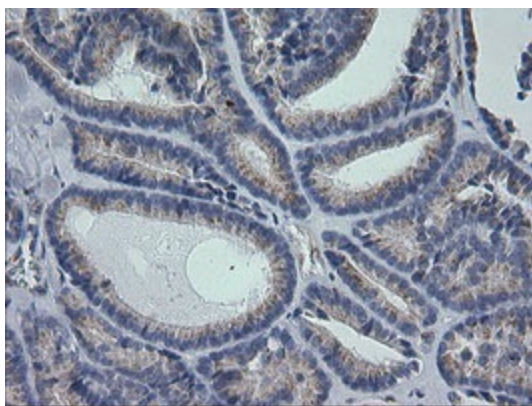
Immunohistochemical staining of paraffin-embedded Adenocarcinoma of Human colon tissue using anti-RAB30 mouse monoclonal antibody. (Heat-induced epitope retrieval by 10mM citric buffer, pH6.0, 120°C for 3min, TA505344)



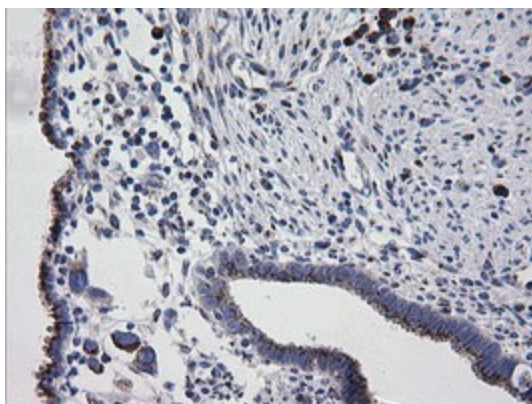
Immunohistochemical staining of paraffin-embedded Adenocarcinoma of Human ovary tissue using anti-RAB30 mouse monoclonal antibody. (Heat-induced epitope retrieval by 10mM citric buffer, pH6.0, 120°C for 3min, TA505344)



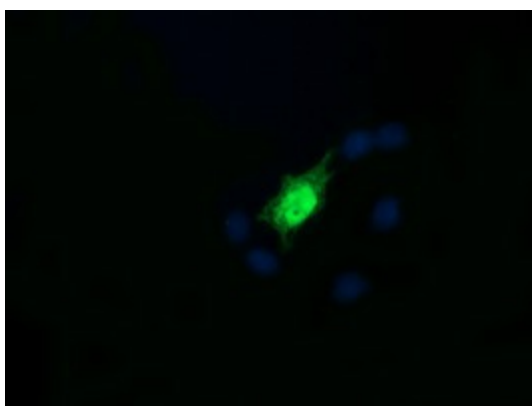
Immunohistochemical staining of paraffin-embedded Human pancreas tissue within the normal limits using anti-RAB30 mouse monoclonal antibody. (Heat-induced epitope retrieval by 10mM citric buffer, pH6.0, 120°C for 3min, TA505344)



Immunohistochemical staining of paraffin-embedded Carcinoma of Human thyroid tissue using anti-RAB30 mouse monoclonal antibody. (Heat-induced epitope retrieval by 10mM citric buffer, pH6.0, 120°C for 3min, TA505344)



Immunohistochemical staining of paraffin-embedded Human endometrium tissue within the normal limits using anti-RAB30 mouse monoclonal antibody. (Heat-induced epitope retrieval by 10mM citric buffer, pH6.0, 120°C for 3min, TA505344)



Anti-RAB30 mouse monoclonal antibody (TA505344) immunofluorescent staining of COS7 cells transiently transfected by pCMV6-ENTRY RAB30 ([RC204318]).