

## Product datasheet for **TA505341BM**

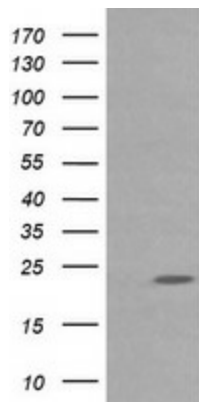
### **RAB30 Mouse Monoclonal Antibody (HRP conjugated) [Clone ID: OTI3F4]**

#### **Product data:**

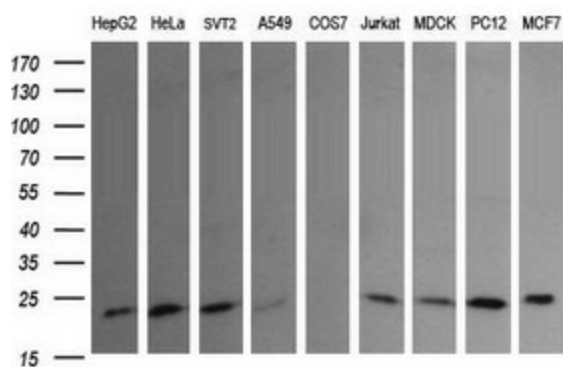
|                         |  |
|-------------------------|--|
| Product Type:           | Primary Antibodies   |
| Clone Name:             | OTI3F4   |
| Applications:           | IF, WB   |
| Recommended Dilution:   | WB 1:200~4000, IF 1:100  |
| Reactivity:             | Human, Dog, Rat, Mouse   |
| Host:                   | Mouse  |
| Isotype:                | IgG2b  |
| Clonality:              | Monoclonal   |
| Immunogen:              | Full length human recombinant protein of human RAB30(NP_055303) produced in HEK293T cell.  |
| Formulation:            | PBS (pH 7.3) containing 1% BSA, 50% glycerol.  |
| Concentration:          | 0.5 mg/ml  |
| Purification:           | Purified from mouse ascites fluids or tissue culture supernatant by affinity chromatography (protein A/G)  |
| Conjugation:            | HRP  |
| Storage:                | Store at -20°C as received.  |
| Stability:              | Stable for 12 months from date of receipt.   |
| Predicted Protein Size: | 22.9 kDa   |
| Gene Name:              | RAB30, member RAS oncogene family  |
| Database Link:          | <a href="#">NP_055303</a><br><a href="#">Entrez Gene 75985</a> <a href="#">MouseEntrez Gene 308821</a> <a href="#">RatEntrez Gene 476787</a> <a href="#">DogEntrez Gene 27314</a><br><a href="#">Human</a><br><a href="#">Q15771</a> |
| Synonyms:               | member RAS oncogene family; RAB30  |
| Protein Families:       | Druggable Genome   |



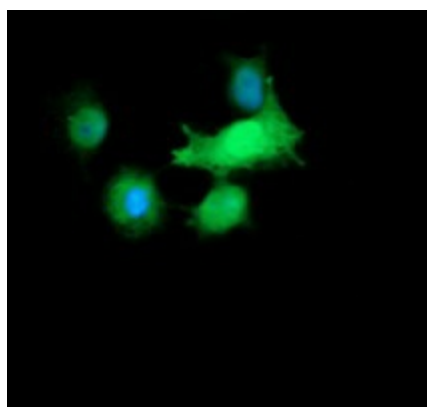
[View online »](#)

**Product images:**


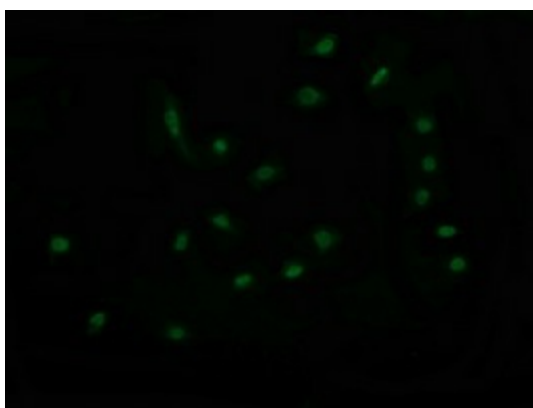
HEK293T cells were transfected with the pCMV6-ENTRY control (Left lane) or pCMV6-ENTRY RAB30 ([RC204318], Right lane) cDNA for 48 hrs and lysed. Equivalent amounts of cell lysates (5 ug per lane) were separated by SDS-PAGE and immunoblotted with anti-RAB30. Positive lysates [LY415246] (100ug) and [LC415246] (20ug) can be purchased separately from OriGene.



Western blot analysis of extracts (35ug) from 9 different cell lines by using anti-RAB30 monoclonal antibody (HepG2: human; HeLa: human; SVT2: mouse; A549: human; COS7: monkey; Jurkat: human; MDCK: canine; PC12: rat; MCF7: human).



Anti-RAB30 mouse monoclonal antibody ([TA505341]) immunofluorescent staining of COS7 cells transiently transfected by pCMV6-ENTRY RAB30 ([RC204318]).



Immunofluorescent staining of HeLa cells using anti-RAB30 mouse monoclonal antibody ([TA505341]).