

## Product datasheet for **TA505311BM**

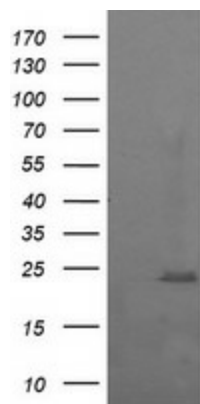
### **RAB37 Mouse Monoclonal Antibody (HRP conjugated) [Clone ID: OTI2F1]**

#### **Product data:**

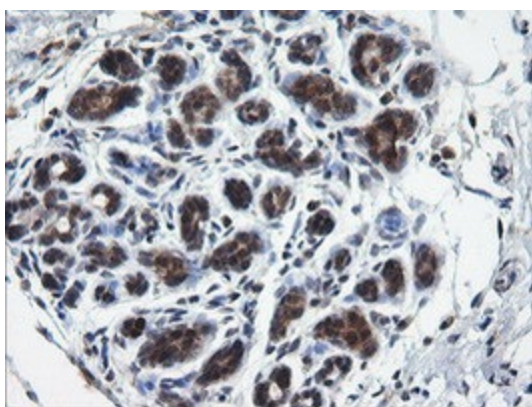
Product Type:	Primary Antibodies
Clone Name:	OTI2F1
Applications:	IF, IHC, WB
Recommended Dilution:	WB 1:2000, IHC 1:150, IF 1:100
Reactivity:	Human, Mouse, Rat
Host:	Mouse
Isotype:	IgG2a
Clonality:	Monoclonal
Immunogen:	Full length human recombinant protein of human RAB37(NP_783865) produced in HEK293T cell.
Formulation:	PBS (pH 7.3) containing 1% BSA, 50% glycerol.
Concentration:	0.5 mg/ml
Purification:	Purified from mouse ascites fluids or tissue culture supernatant by affinity chromatography (protein A/G)
Conjugation:	HRP
Storage:	Store at -20°C as received.
Stability:	Stable for 12 months from date of receipt.
Predicted Protein Size:	24 kDa
Gene Name:	RAB37, member RAS oncogene family
Database Link:	<a href="#">NP_783865</a> <a href="#">Entrez Gene 58222 Mouse</a> <a href="#">Entrez Gene 326624 Human</a> <a href="#">Q96AX2</a>
Background:	Rab proteins are low molecular mass GTPases that are critical regulators of vesicle trafficking. For additional background information on Rab proteins, see MIM 179508. [supplied by OMIM, Apr 2006]
Synonyms:	FLJ30284; FLJ32507
Protein Families:	Druggable Genome, Secreted Protein



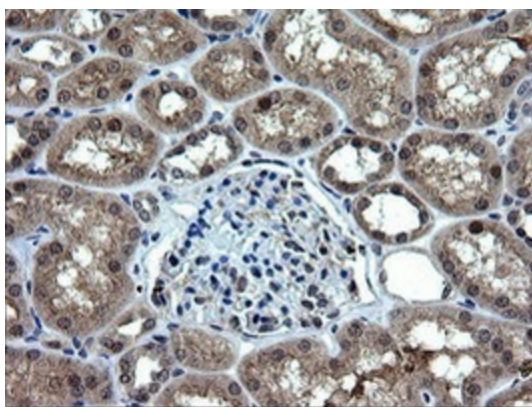
[View online »](#)

**Product images:**

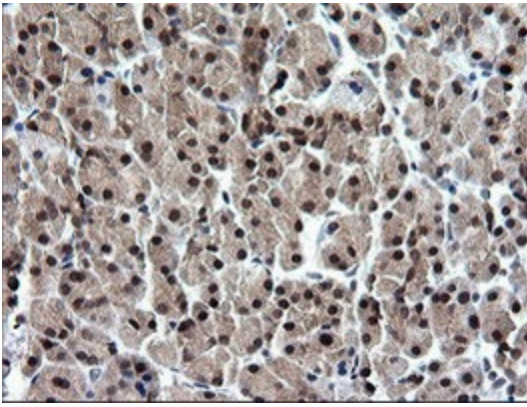
HEK293T cells were transfected with the pCMV6-ENTRY control (Cat# [PS100001], Left lane) or pCMV6-ENTRY RAB37 (Cat# [RC206946], Right lane) cDNA for 48 hrs and lysed. Equivalent amounts of cell lysates (5 ug per lane) were separated by SDS-PAGE and immunoblotted with anti-RAB37(Cat# [TA505311]). Positive lysates [LY406250] (100ug) and [LC406250] (20ug) can be purchased separately from OriGene.



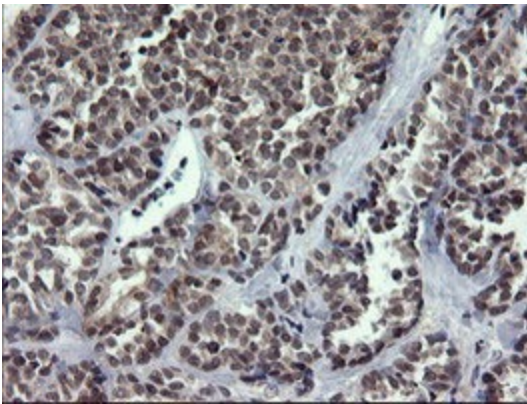
Immunohistochemical staining of paraffin-embedded Human breast tissue within the normal limits using anti-RAB37 mouse monoclonal antibody. (Heat-induced epitope retrieval by 10mM citric buffer, pH6.0, 120°C for 3min, [TA505311])



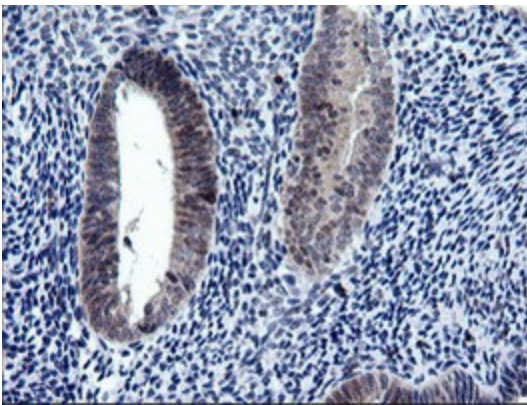
Immunohistochemical staining of paraffin-embedded Human Kidney tissue within the normal limits using anti-RAB37 mouse monoclonal antibody. (Heat-induced epitope retrieval by 10mM citric buffer, pH6.0, 120°C for 3min, [TA505311])



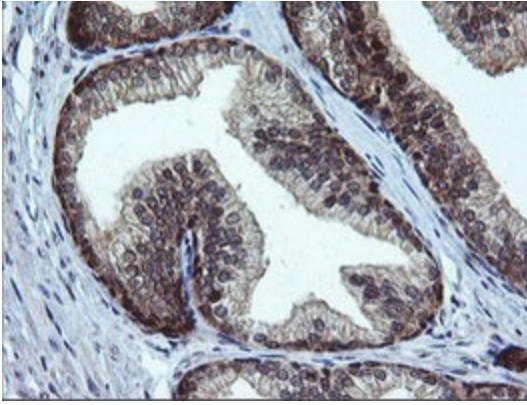
Immunohistochemical staining of paraffin-embedded Human pancreas tissue within the normal limits using anti-RAB37 mouse monoclonal antibody. (Heat-induced epitope retrieval by 10mM citric buffer, pH6.0, 120°C for 3min, [TA505311])



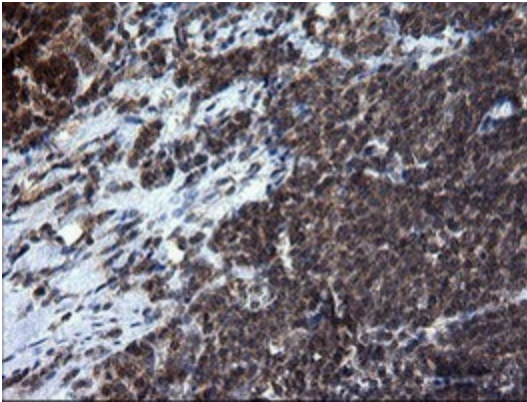
Immunohistochemical staining of paraffin-embedded Carcinoma of Human thyroid tissue using anti-RAB37 mouse monoclonal antibody. (Heat-induced epitope retrieval by 10mM citric buffer, pH6.0, 120°C for 3min, [TA505311])



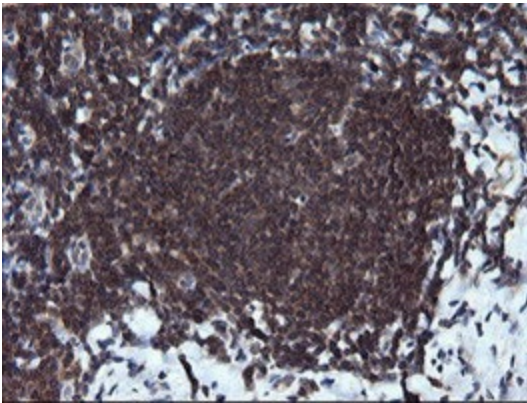
Immunohistochemical staining of paraffin-embedded Human endometrium tissue within the normal limits using anti-RAB37 mouse monoclonal antibody. (Heat-induced epitope retrieval by 10mM citric buffer, pH6.0, 120°C for 3min, [TA505311])



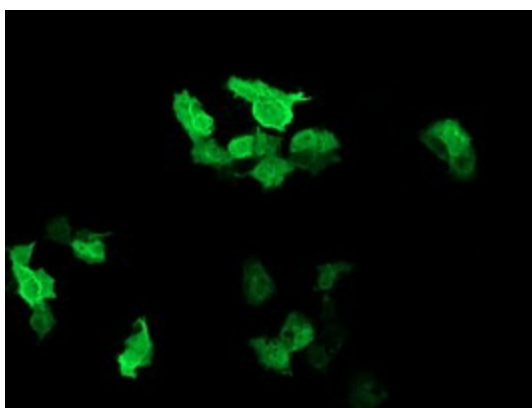
Immunohistochemical staining of paraffin-embedded Human prostate tissue within the normal limits using anti-RAB37 mouse monoclonal antibody. (Heat-induced epitope retrieval by 10mM citric buffer, pH6.0, 120°C for 3min, [TA505311])



Immunohistochemical staining of paraffin-embedded Human lymphoma tissue using anti-RAB37 mouse monoclonal antibody. (Heat-induced epitope retrieval by 10mM citric buffer, pH6.0, 120°C for 3min, [TA505311])



Immunohistochemical staining of paraffin-embedded Human tonsil within the normal limits using anti-RAB37 mouse monoclonal antibody. (Heat-induced epitope retrieval by 10mM citric buffer, pH6.0, 120°C for 3min, [TA505311])



Anti-RAB37 mouse monoclonal antibody ([TA505311]) immunofluorescent staining of COS7 cells transiently transfected by pCMV6-ENTRY RAB37 ([RC206946]).