

## Product datasheet for **TA505311**

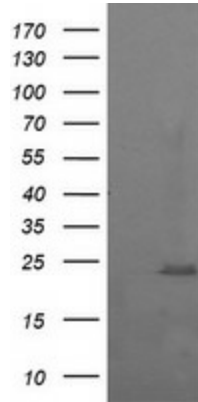
### **RAB37 Mouse Monoclonal Antibody [Clone ID: OTI2F1]**

#### **Product data:**

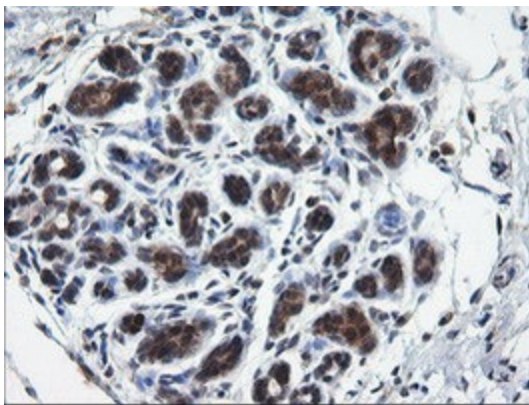
<b>Product Type:</b>	Primary Antibodies
<b>Clone Name:</b>	OTI2F1
<b>Applications:</b>	IF, IHC, WB
<b>Recommended Dilution:</b>	WB 1:2000, IHC 1:150, IF 1:100
<b>Reactivity:</b>	Human, Mouse, Rat
<b>Host:</b>	Mouse
<b>Isotype:</b>	IgG2a
<b>Clonality:</b>	Monoclonal
<b>Immunogen:</b>	Full length human recombinant protein of human RAB37(NP_783865) produced in HEK293T cell.
<b>Formulation:</b>	PBS (pH 7.3) containing 1% BSA, 50% glycerol and 0.02% sodium azide.
<b>Concentration:</b>	1 mg/ml
<b>Purification:</b>	Purified from mouse ascites fluids or tissue culture supernatant by affinity chromatography (protein A/G)
<b>Conjugation:</b>	Unconjugated
<b>Storage:</b>	Store at -20°C as received.
<b>Stability:</b>	Stable for 12 months from date of receipt.
<b>Predicted Protein Size:</b>	24 kDa
<b>Gene Name:</b>	RAB37, member RAS oncogene family
<b>Database Link:</b>	<a href="#">NP_783865</a> <a href="#">Entrez Gene 58222 Mouse</a> <a href="#">Entrez Gene 326624 Human</a> <a href="#">Q96AX2</a>
<b>Background:</b>	Rab proteins are low molecular mass GTPases that are critical regulators of vesicle trafficking. For additional background information on Rab proteins, see MIM 179508. [supplied by OMIM, Apr 2006]
<b>Synonyms:</b>	FLJ30284; FLJ32507
<b>Protein Families:</b>	Druggable Genome, Secreted Protein



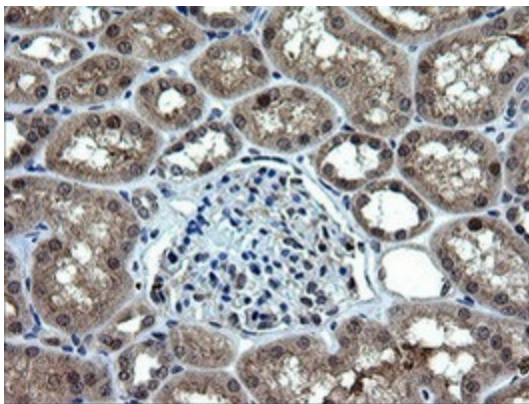
[View online »](#)

**Product images:**


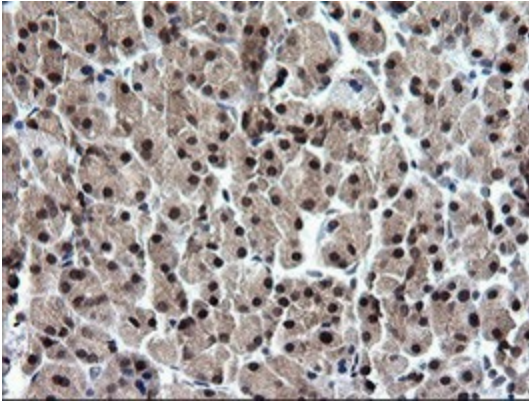
HEK293T cells were transfected with the pCMV6-ENTRY control (Cat# [PS100001], Left lane) or pCMV6-ENTRY RAB37 (Cat# [RC206946], Right lane) cDNA for 48 hrs and lysed. Equivalent amounts of cell lysates (5 ug per lane) were separated by SDS-PAGE and immunoblotted with anti-RAB37(Cat# TA505311). Positive lysates [LY406250] (100ug) and [LC406250] (20ug) can be purchased separately from OriGene.



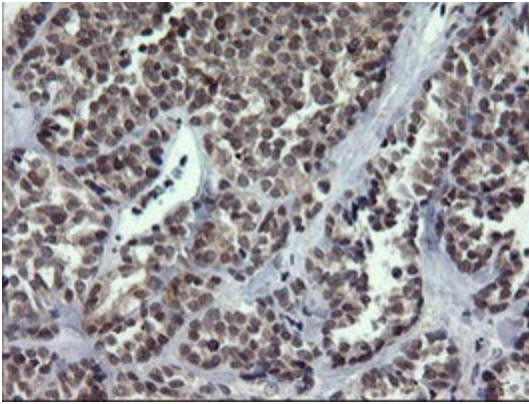
Immunohistochemical staining of paraffin-embedded Human breast tissue within the normal limits using anti-RAB37 mouse monoclonal antibody. (Heat-induced epitope retrieval by 10mM citric buffer, pH6.0, 120°C for 3min, TA505311)



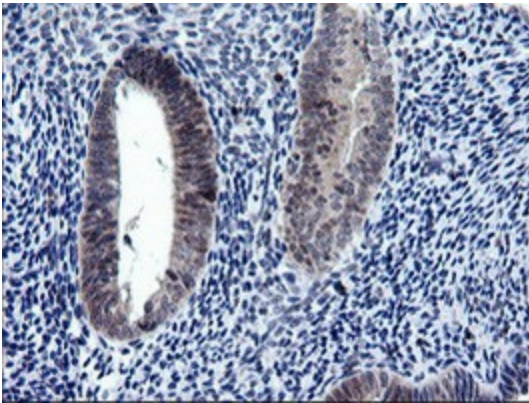
Immunohistochemical staining of paraffin-embedded Human Kidney tissue within the normal limits using anti-RAB37 mouse monoclonal antibody. (Heat-induced epitope retrieval by 10mM citric buffer, pH6.0, 120°C for 3min, TA505311)



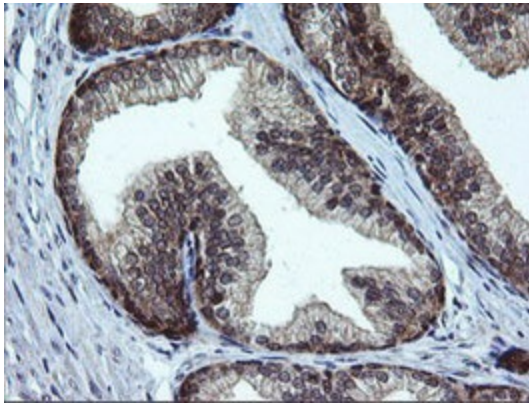
Immunohistochemical staining of paraffin-embedded Human pancreas tissue within the normal limits using anti-RAB37 mouse monoclonal antibody. (Heat-induced epitope retrieval by 10mM citric buffer, pH6.0, 120°C for 3min, TA505311)



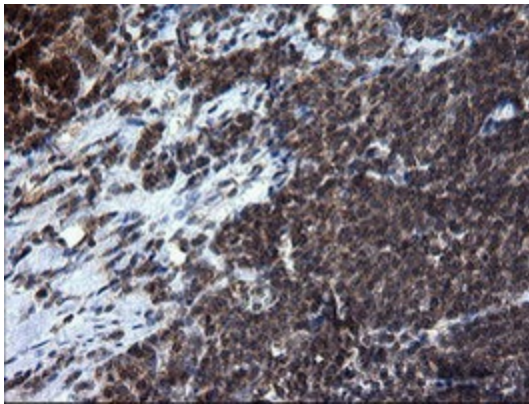
Immunohistochemical staining of paraffin-embedded Carcinoma of Human thyroid tissue using anti-RAB37 mouse monoclonal antibody. (Heat-induced epitope retrieval by 10mM citric buffer, pH6.0, 120°C for 3min, TA505311)



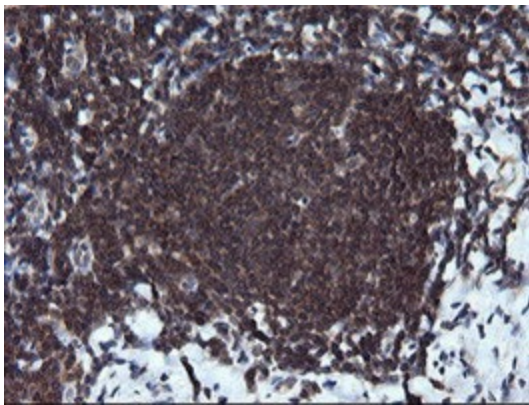
Immunohistochemical staining of paraffin-embedded Human endometrium tissue within the normal limits using anti-RAB37 mouse monoclonal antibody. (Heat-induced epitope retrieval by 10mM citric buffer, pH6.0, 120°C for 3min, TA505311)



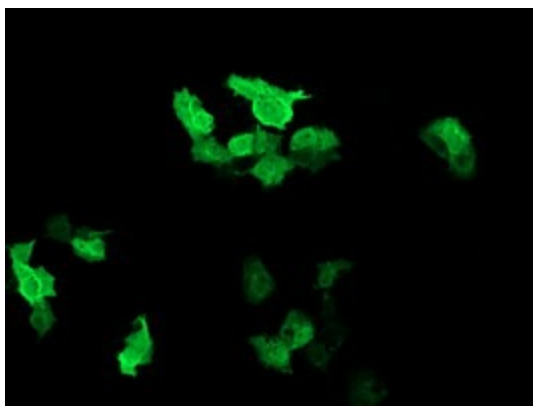
Immunohistochemical staining of paraffin-embedded Human prostate tissue within the normal limits using anti-RAB37 mouse monoclonal antibody. (Heat-induced epitope retrieval by 10mM citric buffer, pH6.0, 120°C for 3min, TA505311)



Immunohistochemical staining of paraffin-embedded Human lymphoma tissue using anti-RAB37 mouse monoclonal antibody. (Heat-induced epitope retrieval by 10mM citric buffer, pH6.0, 120°C for 3min, TA505311)



Immunohistochemical staining of paraffin-embedded Human tonsil within the normal limits using anti-RAB37 mouse monoclonal antibody. (Heat-induced epitope retrieval by 10mM citric buffer, pH6.0, 120°C for 3min, TA505311)



Anti-RAB37 mouse monoclonal antibody (TA505311) immunofluorescent staining of COS7 cells transiently transfected by pCMV6-ENTRY RAB37 ([RC206946]).