

## Product datasheet for **TA505306BM**

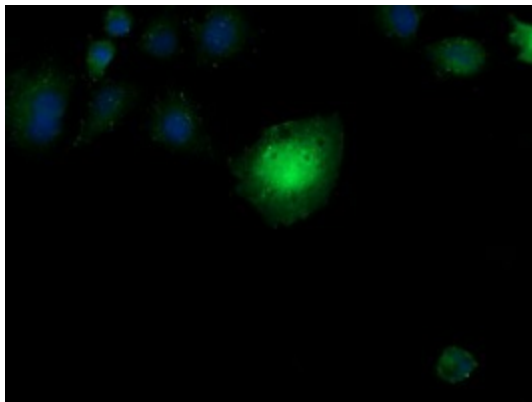
### **CESK1 (CCT8L2) Mouse Monoclonal Antibody (HRP conjugated) [Clone ID: OTI1C1]**

#### **Product data:**

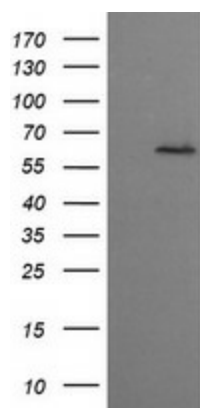
Product Type:	Primary Antibodies
Clone Name:	OTI1C1
Applications:	IF, IHC, WB
Recommended Dilution:	WB 1:4000, IHC 1:150, IF 1:100
Reactivity:	Human
Host:	Mouse
Isotype:	IgG1
Clonality:	Monoclonal
Immunogen:	Full length human recombinant protein of human CCT8L2(NP_055221) produced in HEK293T cell.
Formulation:	PBS (pH 7.3) containing 1% BSA, 50% glycerol.
Concentration:	0.5 mg/ml
Purification:	Purified from mouse ascites fluids or tissue culture supernatant by affinity chromatography (protein A/G)
Conjugation:	HRP
Storage:	Store at -20°C as received.
Stability:	Stable for 12 months from date of receipt.
Predicted Protein Size:	59.2 kDa
Gene Name:	chaperonin containing TCP1 subunit 8 like 2
Database Link:	<a href="#">NP_055221</a> <a href="#">Entrez Gene 150160 Human</a> <a href="#">Q96SF2</a>
Synonyms:	CESK1



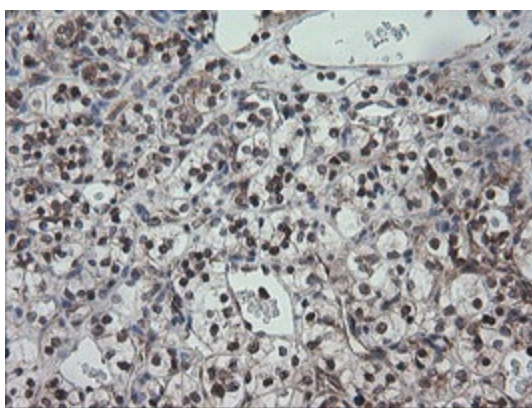
[View online »](#)

**Product images:**

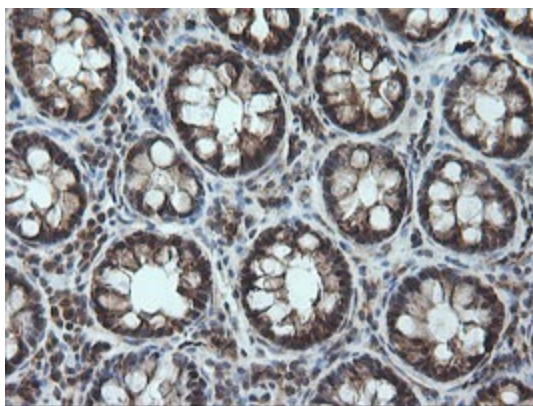
Anti-CCT8L2 mouse monoclonal antibody ([TA505306]) immunofluorescent staining of COS7 cells transiently transfected by pCMV6-ENTRY CCT8L2 ([RC207536]).



HEK293T cells were transfected with the pCMV6-ENTRY control (Left lane) or pCMV6-ENTRY CCT8L2 ([RC207536], Right lane) cDNA for 48 hrs and lysed. Equivalent amounts of cell lysates (5 ug per lane) were separated by SDS-PAGE and immunoblotted with anti-CCT8L2. Positive lysates [LY415299] (100ug) and [LC415299] (20ug) can be purchased separately from OriGene.



Immunohistochemical staining of paraffin-embedded Carcinoma of Human kidney tissue using anti-CCT8L2 mouse monoclonal antibody. (Heat-induced epitope retrieval by 10mM citric buffer, pH6.0, 120°C for 3min, [TA505306])



Immunohistochemical staining of paraffin-embedded Human colon tissue within the normal limits using anti-CCT8L2 mouse monoclonal antibody. (Heat-induced epitope retrieval by 10mM citric buffer, pH6.0, 120°C for 3min, [TA505306])