

Product datasheet for **TA505306**

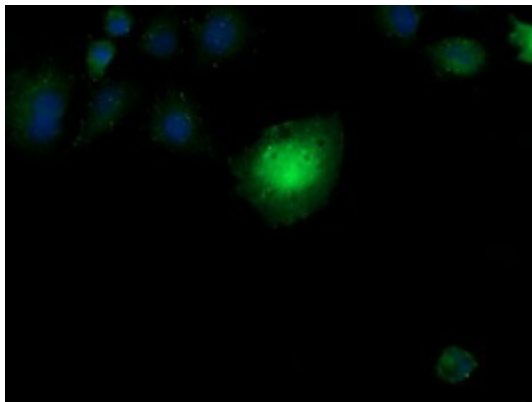
CESK1 (CCT8L2) Mouse Monoclonal Antibody [Clone ID: OTI1C1]

Product data:

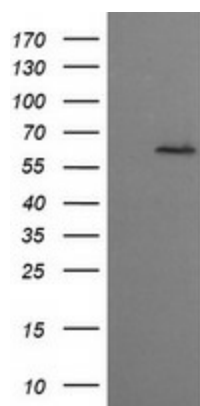
Product Type:	Primary Antibodies
Clone Name:	OTI1C1
Applications:	IF, IHC, WB
Recommended Dilution:	WB 1:4000, IHC 1:150, IF 1:100
Reactivity:	Human
Host:	Mouse
Isotype:	IgG1
Clonality:	Monoclonal
Immunogen:	Full length human recombinant protein of human CCT8L2(NP_055221) produced in HEK293T cell.
Formulation:	PBS (pH 7.3) containing 1% BSA, 50% glycerol and 0.02% sodium azide.
Concentration:	1 mg/ml
Purification:	Purified from mouse ascites fluids or tissue culture supernatant by affinity chromatography (protein A/G)
Conjugation:	Unconjugated
Storage:	Store at -20°C as received.
Stability:	Stable for 12 months from date of receipt.
Predicted Protein Size:	59.2 kDa
Gene Name:	chaperonin containing TCP1 subunit 8 like 2
Database Link:	NP_055221 Entrez Gene 150160 Human Q96SF2
Synonyms:	CESK1



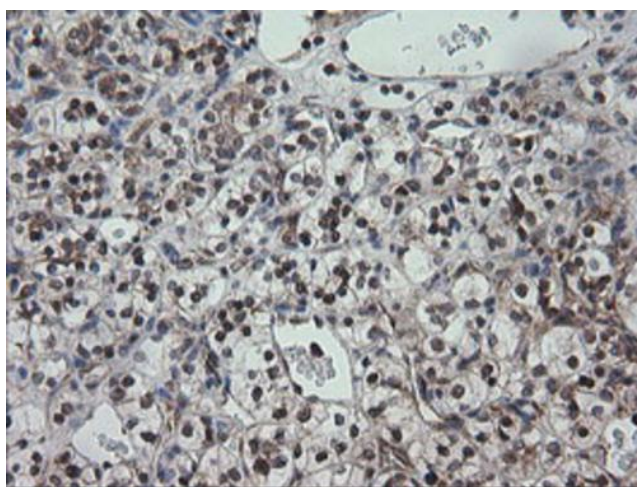
[View online »](#)

Product images:

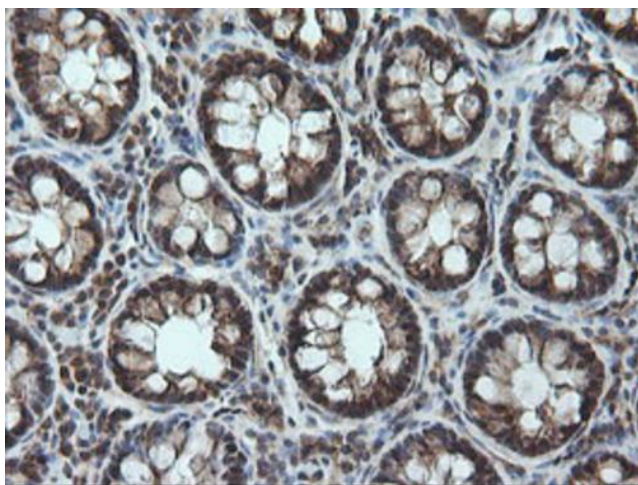
Anti-CCT8L2 mouse monoclonal antibody (TA505306) immunofluorescent staining of COS7 cells transiently transfected by pCMV6-ENTRY CCT8L2 ([RC207536]).



HEK293T cells were transfected with the pCMV6-ENTRY control (Left lane) or pCMV6-ENTRY CCT8L2 ([RC207536], Right lane) cDNA for 48 hrs and lysed. Equivalent amounts of cell lysates (5 ug per lane) were separated by SDS-PAGE and immunoblotted with anti-CCT8L2. Positive lysates [LY415299] (100ug) and [LC415299] (20ug) can be purchased separately from OriGene.



Immunohistochemical staining of paraffin-embedded Carcinoma of Human kidney tissue using anti-CCT8L2 mouse monoclonal antibody. Heat-induced epitope retrieval by EDTA solution buffer pH 8.0 at 120°C for 3 min.



Immunohistochemical staining of paraffin-embedded Human colon tissue within the normal limits using anti-CCT8L2 mouse monoclonal antibody. Heat-induced epitope retrieval by EDTA solution buffer pH 8.0 at 120°C for 3 min.