

Product datasheet for **TA505303**

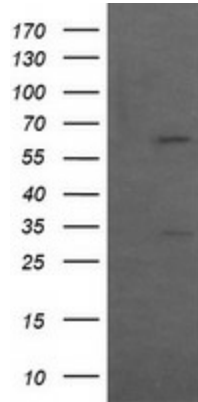
CESK1 (CCT8L2) Mouse Monoclonal Antibody [Clone ID: OTI2F1]

Product data:

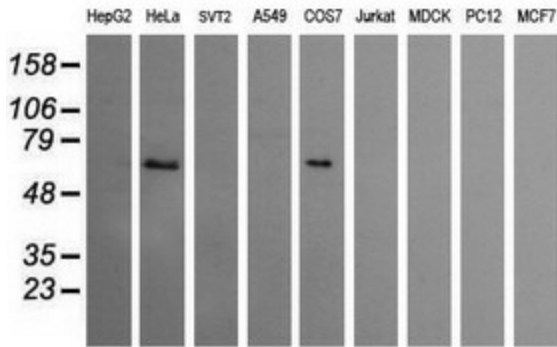
| | |
|--------------------------------|---|
| Product Type: | Primary Antibodies |
| Clone Name: | OTI2F1 |
| Applications: | IF, WB |
| Recommended Dilution: | WB 1:200~2000, IF 1:100 |
| Reactivity: | Human, Monkey |
| Host: | Mouse |
| Isotype: | IgG1 |
| Clonality: | Monoclonal |
| Immunogen: | Full length human recombinant protein of human CCT8L2(NP_055221) produced in HEK293T cell. |
| Formulation: | PBS (pH 7.3) containing 1% BSA, 50% glycerol and 0.02% sodium azide. |
| Concentration: | 1 mg/ml |
| Purification: | Purified from mouse ascites fluids or tissue culture supernatant by affinity chromatography (protein A/G) |
| Conjugation: | Unconjugated |
| Storage: | Store at -20°C as received. |
| Stability: | Stable for 12 months from date of receipt. |
| Predicted Protein Size: | 59.2 kDa |
| Gene Name: | chaperonin containing TCP1 subunit 8 like 2 |
| Database Link: | NP_055221 Entrez Gene 715847 Monkey Entrez Gene 150160 Human Q96SF2 |
| Synonyms: | CESK1 |



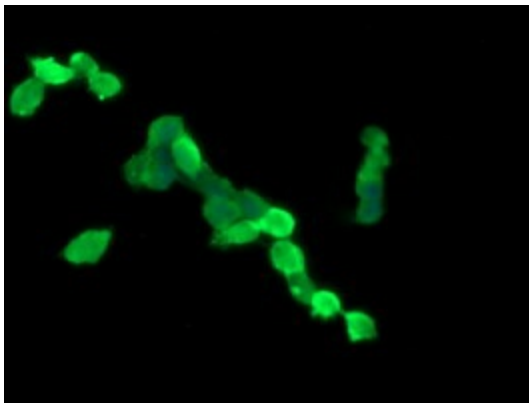
[View online »](#)

Product images:


HEK293T cells were transfected with the pCMV6-ENTRY control (Left lane) or pCMV6-ENTRY CCT8L2 ([RC207536], Right lane) cDNA for 48 hrs and lysed. Equivalent amounts of cell lysates (5 ug per lane) were separated by SDS-PAGE and immunoblotted with anti-CCT8L2. Positive lysates [LY415299] (100ug) and [LC415299] (20ug) can be purchased separately from OriGene.



Western blot analysis of extracts (35ug) from 9 different cell lines by using anti-CCT8L2 monoclonal antibody (HepG2: human; HeLa: human; SVT2: mouse; A549: human; COS7: monkey; Jurkat: human; MDCK: canine; PC12: rat; MCF7: human).



Anti-CCT8L2 mouse monoclonal antibody (TA505303) immunofluorescent staining of COS7 cells transiently transfected by pCMV6-ENTRY CCT8L2 ([RC207536]).