

Product datasheet for **TA505301BM**

Mitochondrial ribosomal protein L11 (MRPL11) Mouse Monoclonal Antibody (HRP conjugated) [Clone ID: OTI3G2]

Product data:

| | |
|-------------------------|---|
| Product Type: | Primary Antibodies |
| Clone Name: | OTI3G2 |
| Applications: | IF, WB |
| Recommended Dilution: | WB 1:500, IF 1:100 |
| Reactivity: | Human, Mouse, Rat |
| Host: | Mouse |
| Isotype: | IgG1 |
| Clonality: | Monoclonal |
| Immunogen: | Full length human recombinant protein of human MRPL11(NP_057134) produced in E.coli. |
| Formulation: | PBS (pH 7.3) containing 1% BSA, 50% glycerol. |
| Concentration: | 0.5 mg/ml |
| Purification: | Purified from mouse ascites fluids or tissue culture supernatant by affinity chromatography (protein A/G) |
| Conjugation: | HRP |
| Storage: | Store at -20°C as received. |
| Stability: | Stable for 12 months from date of receipt. |
| Predicted Protein Size: | 20.5 kDa |
| Gene Name: | mitochondrial ribosomal protein L11 |
| Database Link: | NP_057134 Entrez Gene 65003 Human Q9Y3B7 |



[View online »](#)

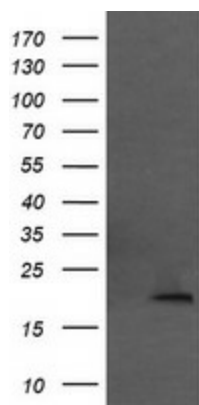
Background:

Mammalian mitochondrial ribosomal proteins are encoded by nuclear genes and help in protein synthesis within the mitochondrion. Mitochondrial ribosomes (mitoribosomes) consist of a small 28S subunit and a large 39S subunit. They have an estimated 75% protein to rRNA composition compared to prokaryotic ribosomes, where this ratio is reversed. Another difference between mammalian mitoribosomes and prokaryotic ribosomes is that the latter contain a 5S rRNA. Among different species, the proteins comprising the mitoribosome differ greatly in sequence, and sometimes in biochemical properties, which prevents easy recognition by sequence homology. This gene encodes a 39S subunit protein. Sequence analysis identified three transcript variants that encode different isoforms. Pseudogenes corresponding to this gene are found on chromosomes 5q and 12q. [provided by RefSeq, Jul 2008]

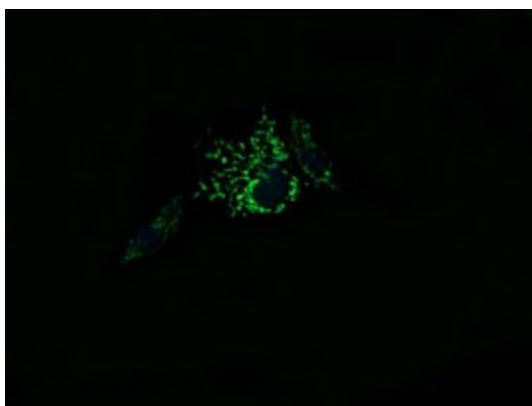
Synonyms:

CGI-113; L11MT; MRP-L11

Product images:



HEK293T cells were transfected with the pCMV6-ENTRY control (Left lane) or pCMV6-ENTRY MRPL11 ([RC200033], Right lane) cDNA for 48 hrs and lysed. Equivalent amounts of cell lysates (5 ug per lane) were separated by SDS-PAGE and immunoblotted with anti-MRPL11. Positive lysates [LY414217] (100ug) and [LC414217] (20ug) can be purchased separately from OriGene.



Anti-MRPL11 mouse monoclonal antibody ([TA505301]) immunofluorescent staining of COS7 cells transiently transfected by pCMV6-ENTRY MRPL11 ([RC200033]).