

## Product datasheet for **TA505281BM**

### TRIM22 Mouse Monoclonal Antibody (HRP conjugated) [Clone ID: OTI1D11]

#### Product data:

Product Type:	Primary Antibodies
Clone Name:	OTI1D11
Applications:	IF, IHC, WB
Recommended Dilution:	WB 1:500, IHC 1:150, IF 1:100
Reactivity:	Human
Host:	Mouse
Isotype:	IgG1
Clonality:	Monoclonal
Immunogen:	Human recombinant protein fragment corresponding to amino acids 61-406 of human TRIM22(NP_006065) produced in E.coli.
Formulation:	PBS (pH 7.3) containing 1% BSA, 50% glycerol.
Concentration:	0.5 mg/ml
Purification:	Purified from mouse ascites fluids or tissue culture supernatant by affinity chromatography (protein A/G)
Conjugation:	HRP
Storage:	Store at -20°C as received.
Stability:	Stable for 12 months from date of receipt.
Predicted Protein Size:	56.8 kDa
Gene Name:	tripartite motif containing 22
Database Link:	<a href="#">NP_006065</a> <a href="#">Entrez Gene 10346 Human</a> <a href="#">Q8IYM9</a>
Background:	The protein encoded by this gene is a member of the tripartite motif (TRIM) family. The TRIM motif includes three zinc-binding domains, a RING, a B-box type 1 and a B-box type 2, and a coiled-coil region. This protein localizes to the cytoplasm and its expression is induced by interferon. The protein down-regulates transcription from the HIV-1 LTR promoter region, suggesting that function of this protein may be to mediate interferon's antiviral effects. Alternative splicing results in multiple transcript variants. [provided by RefSeq, Dec 2010]

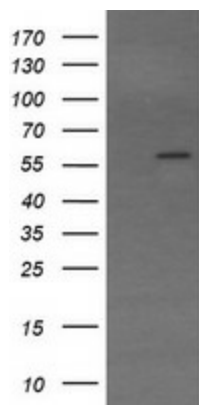


[View online »](#)

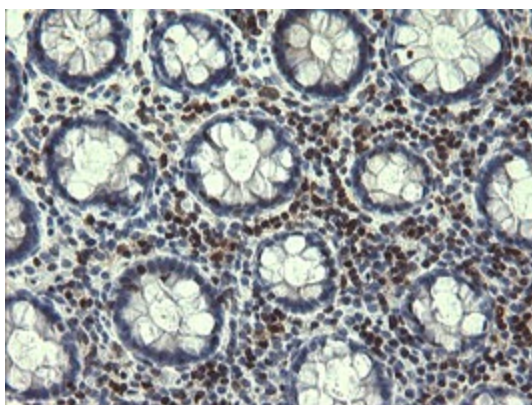
**Synonyms:** GPSTAF50; RNF94; STAF50

**Protein Families:** Druggable Genome, Transcription Factors

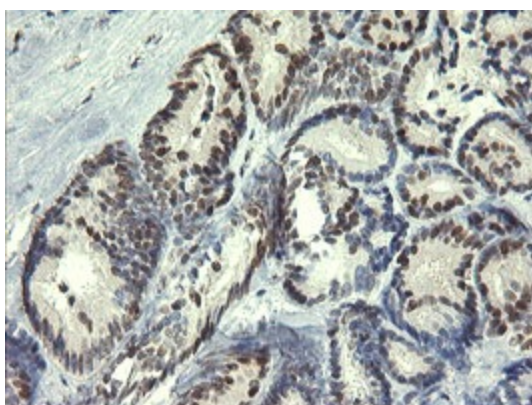
**Product images:**



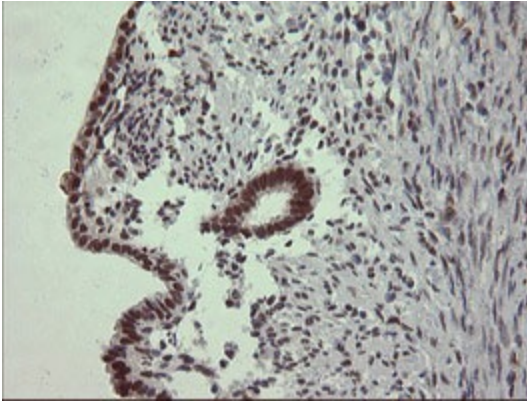
HEK293T cells were transfected with the pCMV6-ENTRY control (Cat# [PS100001], Left lane) or pCMV6-ENTRY TRIM22 (Cat# [RC207431], Right lane) cDNA for 48 hrs and lysed. Equivalent amounts of cell lysates (5 ug per lane) were separated by SDS-PAGE and immunoblotted with anti-TRIM22 (Cat# [TA505281]). Positive lysates [LY401829] (100ug) and [LC401829] (20ug) can be purchased separately from OriGene.



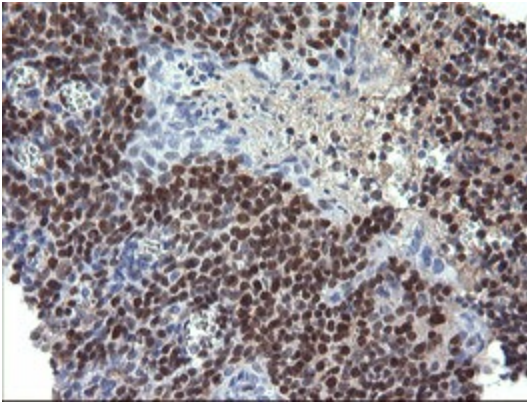
Immunohistochemical staining of paraffin-embedded Human colon tissue within the normal limits using anti-TRIM22 mouse monoclonal antibody. (Heat-induced epitope retrieval by 10mM citric buffer, pH6.0, 120°C for 3min, [TA505281])



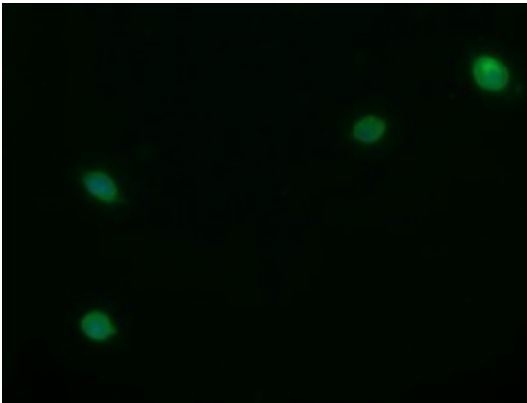
Immunohistochemical staining of paraffin-embedded Carcinoma of Human thyroid tissue using anti-TRIM22 mouse monoclonal antibody. (Heat-induced epitope retrieval by 10mM citric buffer, pH6.0, 120°C for 3min, [TA505281])



Immunohistochemical staining of paraffin-embedded Human endometrium tissue within the normal limits using anti-TRIM22 mouse monoclonal antibody. (Heat-induced epitope retrieval by 10mM citric buffer, pH6.0, 120°C for 3min, [TA505281])



Immunohistochemical staining of paraffin-embedded Human tonsil within the normal limits using anti-TRIM22 mouse monoclonal antibody. (Heat-induced epitope retrieval by 10mM citric buffer, pH6.0, 120°C for 3min, [TA505281])



Anti-TRIM22 mouse monoclonal antibody ([TA505281]) immunofluorescent staining of COS7 cells transiently transfected by pCMV6-ENTRY TRIM22 ([RC207431]).