

## Product datasheet for **TA505275**

### PSMF1 Mouse Monoclonal Antibody [Clone ID: OTI2D7]

#### Product data:

Product Type:	Primary Antibodies
Clone Name:	OTI2D7
Applications:	IF, WB
Recommended Dilution:	WB 1:200~2000, IF 1:100
Reactivity:	Human, Rat
Host:	Mouse
Isotype:	IgG1
Clonality:	Monoclonal
Immunogen:	Full length human recombinant protein of human PSMF1(NP_848693) produced in HEK293T cell.
Formulation:	PBS (pH 7.3) containing 1% BSA, 50% glycerol and 0.02% sodium azide.
Concentration:	1 mg/ml
Purification:	Purified from mouse ascites fluids or tissue culture supernatant by affinity chromatography (protein A/G)
Conjugation:	Unconjugated
Storage:	Store at -20°C as received.
Stability:	Stable for 12 months from date of receipt.
Predicted Protein Size:	29.6 kDa
Gene Name:	proteasome inhibitor subunit 1
Database Link:	<a href="#">NP_848693</a> <a href="#">Entrez Gene 689852 Rat</a> <a href="#">Entrez Gene 9491 Human</a> <a href="#">Q92530</a>



[View online »](#)

**Background:**

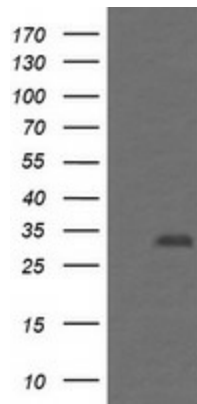
The 26S proteasome is a multicatalytic proteinase complex with a highly ordered structure composed of 2 complexes, a 20S core and a 19S regulator. The 20S core is composed of 4 rings of 28 non-identical subunits; 2 rings are composed of 7 alpha subunits and 2 rings are composed of 7 beta subunits. The 19S regulator is composed of a base, which contains 6 ATPase subunits and 2 non-ATPase subunits, and a lid, which contains up to 10 non-ATPase subunits. Proteasomes are distributed throughout eukaryotic cells at a high concentration and cleave peptides in an ATP/ubiquitin-dependent process in a non-lysosomal pathway. An essential function of a modified proteasome, the immunoproteasome, is the processing of class I MHC peptides. This gene encodes a protein that inhibits the activation of the proteasome by the 11S and 19S regulators. Alternative transcript variants have been identified for this gene. [provided by RefSeq, Jul 2008]

**Synonyms:**

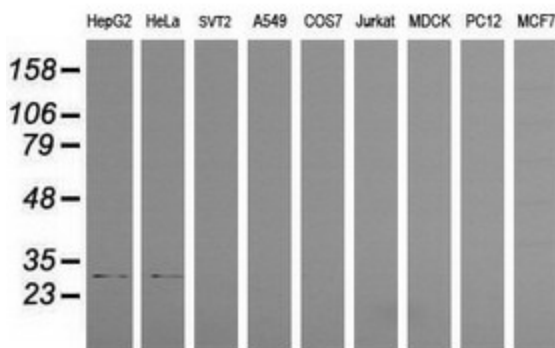
PI31

**Protein Pathways:**

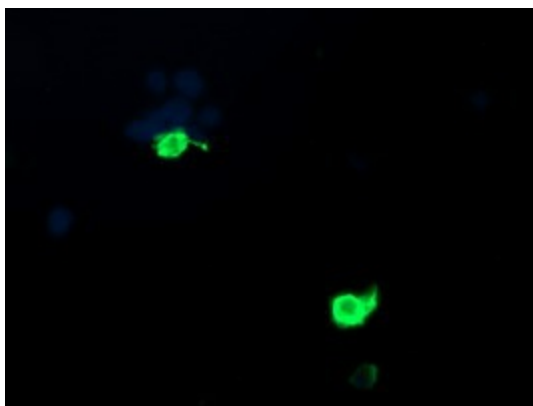
Proteasome

**Product images:**


HEK293T cells were transfected with the pCMV6-ENTRY control (Cat# [PS100001], Left lane) or pCMV6-ENTRY PSMF1 (Cat# [RC215482], Right lane) cDNA for 48 hrs and lysed. Equivalent amounts of cell lysates (5 ug per lane) were separated by SDS-PAGE and immunoblotted with anti-PSMF1 (Cat# TA505275). Positive lysates [LY405875] (100ug) and [LC405875] (20ug) can be purchased separately from OriGene.



Western blot analysis of extracts (35ug) from 9 different cell lines by using anti-PSMF1 monoclonal antibody (HepG2: human; HeLa: human; SVT2: mouse; A549: human; COS7: monkey; Jurkat: human; MDCK: canine; PC12: rat; MCF7: human).



Anti-PSMF1 mouse monoclonal antibody (TA505275) immunofluorescent staining of COS7 cells transiently transfected by pCMV6-ENTRY PSMF1 ([RC215482]).