

## Product datasheet for **TA505268AM**

### **SRY Mouse Monoclonal Antibody (Biotin conjugated) [Clone ID: OTI1G6]**

#### **Product data:**

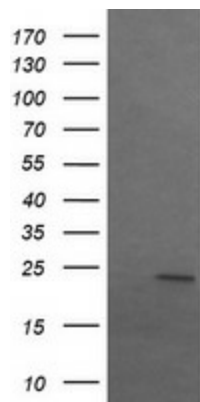
Product Type:	Primary Antibodies
Clone Name:	OTI1G6
Applications:	IF, WB
Recommended Dilution:	WB 1:500, IF 1:100
Reactivity:	Human
Host:	Mouse
Isotype:	IgG1
Clonality:	Monoclonal
Immunogen:	Full length human recombinant protein of human SRY(NP_003131) produced in E.coli.
Formulation:	PBS (pH 7.3) containing 1% BSA, 50% glycerol and 0.02% sodium azide.
Concentration:	0.5 mg/ml
Purification:	Purified from mouse ascites fluids or tissue culture supernatant by affinity chromatography (protein A/G)
Conjugation:	Biotin
Storage:	Store at -20°C as received.
Stability:	Stable for 12 months from date of receipt.
Predicted Protein Size:	23.7 kDa
Gene Name:	sex determining region Y
Database Link:	<a href="#">NP_003131</a> <a href="#">Entrez Gene 6736 Human</a> <a href="#">Q05066</a>
Background:	This intronless gene encodes a transcription factor that is a member of the high mobility group (HMG)-box family of DNA-binding proteins. This protein is the testis-determining factor (TDF), which initiates male sex determination. Mutations in this gene give rise to XY females with gonadal dysgenesis (Swyer syndrome); translocation of part of the Y chromosome containing this gene to the X chromosome causes XX male syndrome. [provided by RefSeq, Jul 2008]



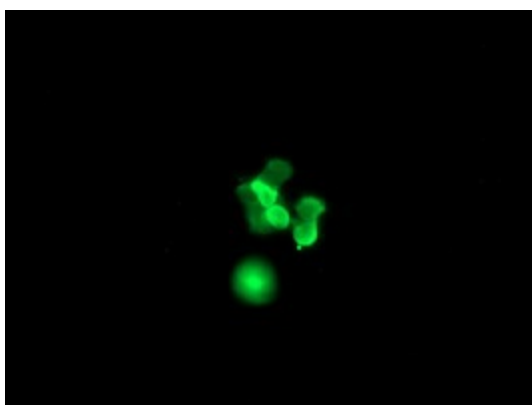
[View online »](#)

Synonyms: SRXX1; SRXY1; TDF; TDY

### Product images:



HEK293T cells were transfected with the pCMV6-ENTRY control (Left lane) or pCMV6-ENTRY SRY ([RC210382], Right lane) cDNA for 48 hrs and lysed. Equivalent amounts of cell lysates (5 ug per lane) were separated by SDS-PAGE and immunoblotted with anti-SRY. Positive lysates [LY418872] (100ug) and [LC418872] (20ug) can be purchased separately from OriGene.



Anti-SRY mouse monoclonal antibody ([TA505268]) immunofluorescent staining of COS7 cells transiently transfected by pCMV6-ENTRY SRY ([RC210382]).