

## Product datasheet for **TA505266M**

### Asialoglycoprotein Receptor 2 (ASGR2) Mouse Monoclonal Antibody [Clone ID: OTI4B6]

#### Product data:

Product Type:	Primary Antibodies
Clone Name:	OTI4B6
Applications:	IF, WB
Recommended Dilution:	WB 1:4000, IF 1:100
Reactivity:	Human
Host:	Mouse
Isotype:	IgG2b
Clonality:	Monoclonal
Immunogen:	Full length human recombinant protein of human ASGR2(NP_001172) produced in HEK293T cell.
Formulation:	PBS (pH 7.3) containing 1% BSA, 50% glycerol and 0.02% sodium azide.
Concentration:	1 mg/ml
Purification:	Purified from mouse ascites fluids or tissue culture supernatant by affinity chromatography (protein A/G)
Conjugation:	Unconjugated
Storage:	Store at -20°C as received.
Stability:	Stable for 12 months from date of receipt.
Predicted Protein Size:	35 kDa
Gene Name:	asialoglycoprotein receptor 2
Database Link:	<a href="#">NP_001172</a> <a href="#">Entrez Gene 433 Human</a> <a href="#">P07307</a>



[View online »](#)

## Background:

This gene encodes a subunit of the asialoglycoprotein receptor. This receptor is a transmembrane protein that plays a critical role in serum glycoprotein homeostasis by mediating the endocytosis and lysosomal degradation of glycoproteins with exposed terminal galactose or N-acetylgalactosamine residues. The asialoglycoprotein receptor may facilitate hepatic infection by multiple viruses including hepatitis B, and is also a target for liver-specific drug delivery. The asialoglycoprotein receptor is a hetero-oligomeric protein composed of major and minor subunits, which are encoded by different genes. The protein encoded by this gene is the less abundant minor subunit. Alternatively spliced transcript variants encoding multiple isoforms have been observed for this gene. [provided by RefSeq, Jan 2011]

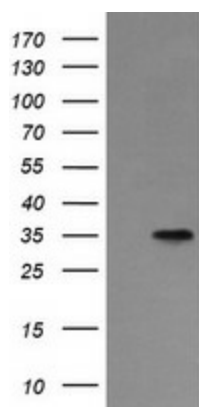
## Synonyms:

ASGP-R2; ASGPR2; CLEC4H2; HBXBP; HL-2

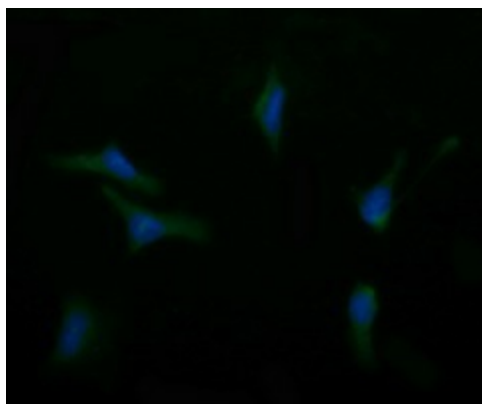
## Protein Families:

Druggable Genome, Transmembrane

## Product images:



HEK293T cells were transfected with the pCMV6-ENTRY control (Left lane) or pCMV6-ENTRY ASGR2 ([RC213607], Right lane) cDNA for 48 hrs and lysed. Equivalent amounts of cell lysates (5 ug per lane) were separated by SDS-PAGE and immunoblotted with anti-ASGR2. Positive lysates [LY420082] (100ug) and [LC420082] (20ug) can be purchased separately from OriGene.



Immunofluorescent staining of HeLa cells using anti-ASGR2 mouse monoclonal antibody ([TA505266]).