

## Product datasheet for **TA505252S**

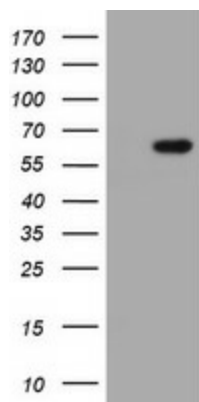
### PIP3E (IPCEF1) Mouse Monoclonal Antibody [Clone ID: OTI3G2]

#### Product data:

Product Type:	Primary Antibodies
Clone Name:	OTI3G2
Applications:	WB
Recommended Dilution:	WB 1:2000
Reactivity:	Human
Host:	Mouse
Isotype:	IgG1
Clonality:	Monoclonal
Immunogen:	Full length human recombinant protein of human IPCEF1(NP_056368) produced in HEK293T cell.
Formulation:	PBS (pH 7.3) containing 1% BSA, 50% glycerol and 0.02% sodium azide.
Concentration:	1 mg/ml
Purification:	Purified from mouse ascites fluids or tissue culture supernatant by affinity chromatography (protein A/G)
Conjugation:	Unconjugated
Storage:	Store at -20°C as received.
Stability:	Stable for 12 months from date of receipt.
Predicted Protein Size:	48.8 kDa
Gene Name:	interaction protein for cytohesin exchange factors 1
Database Link:	<a href="#">NP_056368</a> <a href="#">Entrez Gene 26034 Human</a> <a href="#">Q8WWN9</a>
Synonyms:	PIP3-E



[View online »](#)

**Product images:**

HEK293T cells were transfected with the pCMV6-ENTRY control (Cat# [PS100001], Left lane) or pCMV6-ENTRY IPCEF1 (Cat# [RC211235], Right lane) cDNA for 48 hrs and lysed. Equivalent amounts of cell lysates (5 ug per lane) were separated by SDS-PAGE and immunoblotted with anti-IPCEF1 (Cat# [TA505252]). Positive lysates [LY414468] (100ug) and [LC414468] (20ug) can be purchased separately from OriGene.