

## Product datasheet for **TA505250BM**

### FATE1 Mouse Monoclonal Antibody (HRP conjugated) [Clone ID: OTI7B12]

#### Product data:

Product Type:	Primary Antibodies
Clone Name:	OTI7B12
Applications:	IF, WB
Recommended Dilution:	WB 1:2000, IF 1:100
Reactivity:	Human
Host:	Mouse
Isotype:	IgG1
Clonality:	Monoclonal
Immunogen:	Full length human recombinant protein of human FATE1(NP_149076) produced in HEK293T cell.
Formulation:	PBS (pH 7.3) containing 1% BSA, 50% glycerol.
Concentration:	0.5 mg/ml
Purification:	Purified from mouse ascites fluids or tissue culture supernatant by affinity chromatography (protein A/G)
Conjugation:	HRP
Storage:	Store at -20°C as received.
Stability:	Stable for 12 months from date of receipt.
Predicted Protein Size:	20.5 kDa
Gene Name:	fetal and adult testis expressed 1
Database Link:	<a href="#">NP_149076</a> <a href="#">Entrez Gene 89885 Human</a> <a href="#">Q969F0</a>
Background:	This gene encodes a cancer-testis antigen that is highly expressed in hepatocellular carcinomas and other tumors and weakly expressed in normal tissues except testis. The protein is strongly expressed in spermatogonia, primary spermatocytes, and Sertoli cells in seminiferous tubules. This protein may have a role in the control of early testicular differentiation and cell proliferation. [provided by RefSeq, Jan 2010]

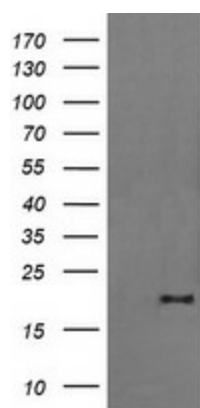


[View online »](#)

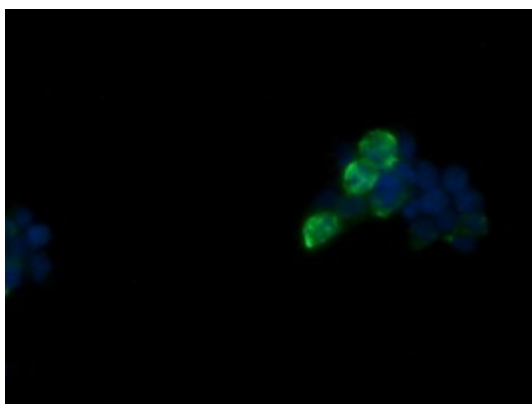
Synonyms: CT43; FATE

Protein Families: Transmembrane

### Product images:



HEK293T cells were transfected with the pCMV6-ENTRY control (Left lane) or pCMV6-ENTRY FATE1 ([RC205951], Right lane) cDNA for 48 hrs and lysed. Equivalent amounts of cell lysates (5 ug per lane) were separated by SDS-PAGE and immunoblotted with anti-FATE1. Positive lysates [LY409735] (100ug) and [LC409735] (20ug) can be purchased separately from OriGene.



Anti-FATE1 mouse monoclonal antibody ([TA505250]) immunofluorescent staining of COS7 cells transiently transfected by pCMV6-ENTRY FATE1 ([RC205951]).