

Product datasheet for **TA505248M**

Serum Amyloid P (APCS) Mouse Monoclonal Antibody [Clone ID: OT11H2]

Product data:

Product Type:	Primary Antibodies
Clone Name:	OT11H2
Applications:	IF, WB
Recommended Dilution:	WB 1:1000, IF 1:100
Reactivity:	Human
Host:	Mouse
Isotype:	IgG1
Clonality:	Monoclonal
Immunogen:	Full length human recombinant protein of human APCS(NP_001630) produced in HEK293T cell.
Formulation:	PBS (pH 7.3) containing 1% BSA, 50% glycerol and 0.02% sodium azide.
Concentration:	1 mg/ml
Purification:	Purified from mouse ascites fluids or tissue culture supernatant by affinity chromatography (protein A/G)
Conjugation:	Unconjugated
Storage:	Store at -20°C as received.
Stability:	Stable for 12 months from date of receipt.
Predicted Protein Size:	23.2 kDa
Gene Name:	amyloid P component, serum
Database Link:	NP_001630 Entrez Gene 325 Human P02743



[View online »](#)

Background:

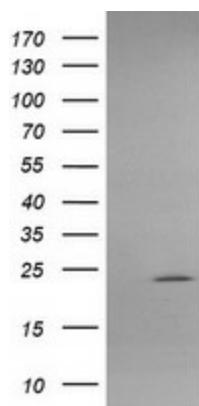
The protein encoded by this gene is a glycoprotein, belonging to the pentraxin family of proteins, which has a characteristic pentameric organization. These family members have considerable sequence homology which is thought to be the result of gene duplication. The binding of the encoded protein to proteins in the pathological amyloid cross-beta fold suggests its possible role as a chaperone. This protein is also thought to control the degradation of chromatin. It has been demonstrated that this protein binds to apoptotic cells at an early stage, which raises the possibility that it is involved in dealing with apoptotic cells in vivo. [provided by RefSeq, Sep 2008]

Synonyms:

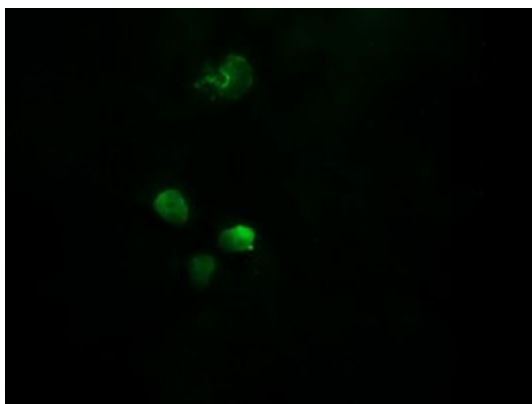
HEL-S-92n; PTX2; SAP

Protein Families:

Druggable Genome, Secreted Protein

Product images:


HEK293T cells were transfected with the pCMV6-ENTRY control (Cat# [PS100001], Left lane) or pCMV6-ENTRY APCS (Cat# [RC202802], Right lane) cDNA for 48 hrs and lysed. Equivalent amounts of cell lysates (5 ug per lane) were separated by SDS-PAGE and immunoblotted with anti-APCS (Cat# [TA505248]). Positive lysates [LY400617] (100ug) and [LC400617] (20ug) can be purchased separately from OriGene.



Anti-APCS mouse monoclonal antibody ([TA505248]) immunofluorescent staining of COS7 cells transiently transfected by pCMV6-ENTRY APCS ([RC202802]).