

## Product datasheet for **TA505246BM**

### LRCH4 Mouse Monoclonal Antibody (HRP conjugated) [Clone ID: OT11F8]

#### Product data:

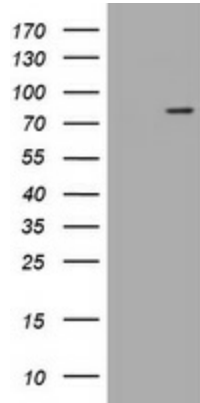
Product Type:	Primary Antibodies
Clone Name:	OT11F8
Applications:	IHC, WB
Recommended Dilution:	WB 1:2000, IHC 1:150
Reactivity:	Human, Mouse
Host:	Mouse
Isotype:	IgG1
Clonality:	Monoclonal
Immunogen:	Full length human recombinant protein of human LRCH4 (NP_002310) produced in HEK293T cell.
Formulation:	PBS (pH 7.3) containing 1% BSA, 50% glycerol.
Concentration:	0.5 mg/ml
Purification:	Purified from mouse ascites fluids or tissue culture supernatant by affinity chromatography (protein A/G)
Conjugation:	HRP
Storage:	Store at -20°C as received.
Stability:	Stable for 12 months from date of receipt.
Predicted Protein Size:	73.3 kDa
Gene Name:	leucine rich repeats and calponin homology domain containing 4
Database Link:	<a href="#">NP_002310</a> <a href="#">Entrez Gene 4034 Human</a> <a href="#">O75427</a>
Background:	This gene encodes a protein that contains leucine-rich repeats (LRR) at its amino terminus and that is known to be involved in ligand binding. The carboxyl terminus may act as a membrane anchor. Identified structural elements suggest that the encoded protein resembles a receptor. [provided by RefSeq, Jul
Synonyms:	LRN; LRRN1; LRRN4; PP14183



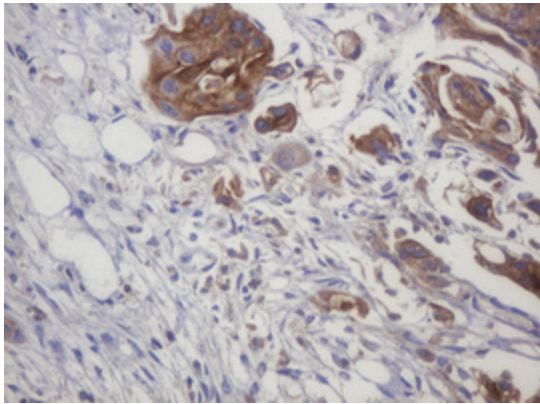
[View online »](#)

Protein Families: Druggable Genome, Transmembrane

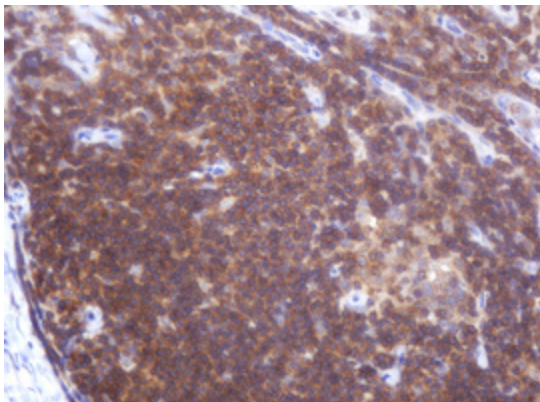
**Product images:**



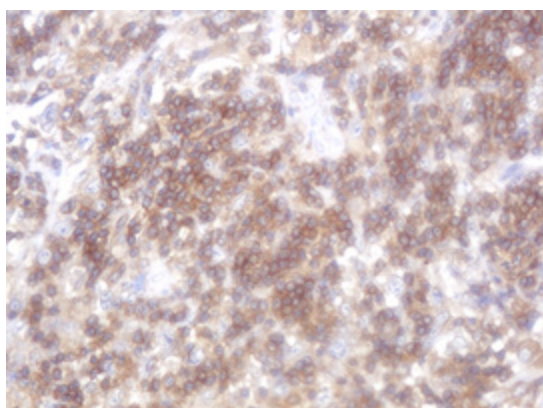
HEK293T cells were transfected with the pCMV6-ENTRY control (Cat# [PS100001], Left lane) or pCMV6-ENTRY LRCH4 (Cat# [RC202263], Right lane) cDNA for 48 hrs and lysed. Equivalent amounts of cell lysates (5 ug per lane) were separated by SDS-PAGE and immunoblotted with anti-LRCH4(Cat# [TA505246]). Positive lysates [LY419382] (100ug) and [LC419382] (20ug) can be purchased separately from OriGene.



Immunohistochemical staining of paraffin-embedded Carcinoma of Human bladder tissue using anti-LRCH4 mouse monoclonal antibody. (Heat-induced epitope retrieval by 10mM citric buffer, pH6.0, 120°C for 3min, [TA505246])



Immunohistochemical staining of paraffin-embedded Human lymph node tissue within the normal limits using anti-LRCH4 mouse monoclonal antibody. (Heat-induced epitope retrieval by 10mM citric buffer, pH6.0, 120°C for 3min, [TA505246])



Immunohistochemical staining of paraffin-embedded Human lymphoma tissue using anti-LRCH4 mouse monoclonal antibody. (Heat-induced epitope retrieval by 10mM citric buffer, pH6.0, 120°C for 3min, [TA505246])