

## Product datasheet for **TA505245AM**

### PPIL3 Mouse Monoclonal Antibody (Biotin conjugated) [Clone ID: OTI1G3]

#### Product data:

Product Type:	Primary Antibodies
Clone Name:	OTI1G3
Applications:	FC, WB
Recommended Dilution:	WB 1:1000, FLOW 1:100
Reactivity:	Human, Mouse, Rat
Host:	Mouse
Isotype:	IgG1
Clonality:	Monoclonal
Immunogen:	Full length human recombinant protein of human PPIL3(NP_572028) produced in E.coli.
Formulation:	PBS (pH 7.3) containing 1% BSA, 50% glycerol and 0.02% sodium azide.
Concentration:	0.5 mg/ml
Purification:	Purified from mouse ascites fluids or tissue culture supernatant by affinity chromatography (protein A/G)
Conjugation:	Biotin
Storage:	Store at -20°C as received.
Stability:	Stable for 12 months from date of receipt.
Predicted Protein Size:	18 kDa
Gene Name:	peptidylprolyl isomerase like 3
Database Link:	<a href="#">NP_572028</a> <a href="#">Entrez Gene 70225 Mouse</a> <a href="#">Entrez Gene 301432 Rat</a> <a href="#">Entrez Gene 53938 Human</a> <a href="#">Q9H2H8</a>
Background:	This gene encodes a member of the cyclophilin family. Cyclophilins catalyze the cis-trans isomerization of peptidylprolyl imide bonds in oligopeptides. They have been proposed to act either as catalysts or as molecular chaperones in protein-folding events. Alternative splicing results in multiple transcript variants. [provided by RefSeq]

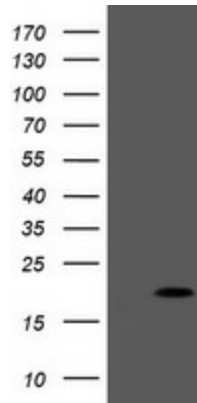


[View online »](#)

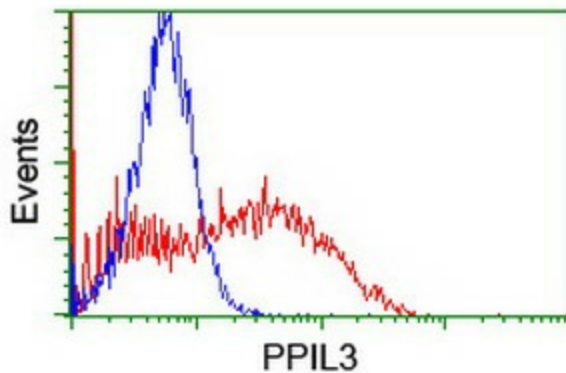
**Synonyms:**

cyclophilin-like protein 3; cyclophilin J; CYPJ; peptidylprolyl cis-trans isomerase-like protein 3; peptidylprolyl isomerase (cyclophilin)-like 3; peptidylprolyl isomerase-like 3; PPIase-like protein 3

**Product images:**



HEK293T cells were transfected with the pCMV6-ENTRY control (Left lane) or pCMV6-ENTRY PPIL3 ([RC217389], Right lane) cDNA for 48 hrs and lysed. Equivalent amounts of cell lysates (5 ug per lane) were separated by SDS-PAGE and immunoblotted with anti-PPIL3. Positive lysates [LY408889] (100ug) and [LC408889] (20ug) can be purchased separately from OriGene.



HEK293T cells transfected with either [RC217389] overexpress plasmid (Red) or empty vector control plasmid (Blue) were immunostained by anti-PPIL3 antibody ([TA505245]), and then analyzed by flow cytometry.