

## Product datasheet for **TA505229AM**

### MRPS34 Mouse Monoclonal Antibody (Biotin conjugated) [Clone ID: OTI4H2]

#### Product data:

|                         |  |
|-------------------------|--|
| Product Type:           | Primary Antibodies   |
| Clone Name:             | OTI4H2   |
| Applications:           | IF, IHC, WB  |
| Recommended Dilution:   | WB 1:500~2000, IHC 1:150, IF 1:100   |
| Reactivity:             | Human, Mouse, Rat  |
| Host:                   | Mouse  |
| Isotype:                | IgG1   |
| Clonality:              | Monoclonal   |
| Immunogen:              | Full length human recombinant protein of human MRPS34(NP_076425) produced in E.coli.   |
| Formulation:            | PBS (pH 7.3) containing 1% BSA, 50% glycerol and 0.02% sodium azide.   |
| Concentration:          | 0.5 mg/ml  |
| Purification:           | Purified from mouse ascites fluids or tissue culture supernatant by affinity chromatography (protein A/G)                              |
| Conjugation:            | Biotin   |
| Storage:                | Store at -20°C as received.  |
| Stability:              | Stable for 12 months from date of receipt.   |
| Predicted Protein Size: | 25.5 kDa   |
| Gene Name:              | mitochondrial ribosomal protein S34  |
| Database Link:          | <a href="#">NP_076425</a><br><a href="#">Entrez Gene 79044 Mouse</a> <a href="#">Entrez Gene 65993 Human</a><br><a href="#">P82930</a> |



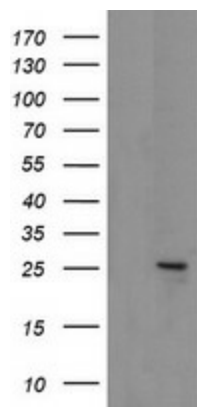
[View online »](#)

**Background:**

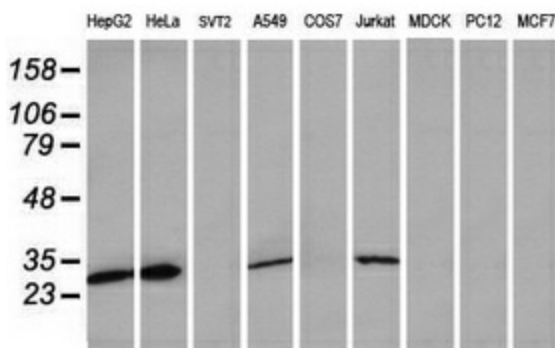
Mammalian mitochondrial ribosomal proteins are encoded by nuclear genes and help in protein synthesis within the mitochondrion. Mitochondrial ribosomes (mitoribosomes) consist of a small 28S subunit and a large 39S subunit. They have an estimated 75% protein to rRNA composition compared to prokaryotic ribosomes, where this ratio is reversed. Another difference between mammalian mitoribosomes and prokaryotic ribosomes is that the latter contain a 5S rRNA. Among different species, the proteins comprising the mitoribosome differ greatly in sequence, and sometimes in biochemical properties, which prevents easy recognition by sequence homology. This gene encodes a 28S subunit protein. Alternate splice variants of this gene have been described but their full-length nature has not been determined. [provided by RefSeq]. COMPLETENESS: complete on the 3' end.

**Synonyms:**

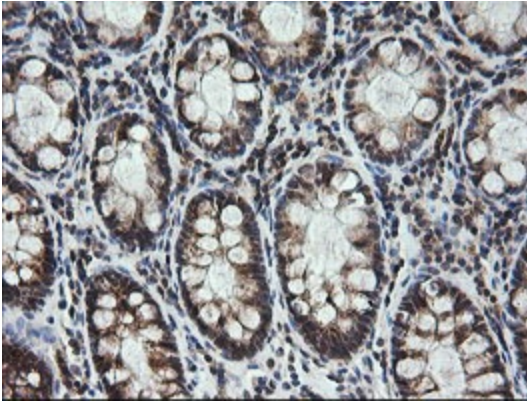
MRP-S12; MRP-S34; MRPS12

**Product images:**


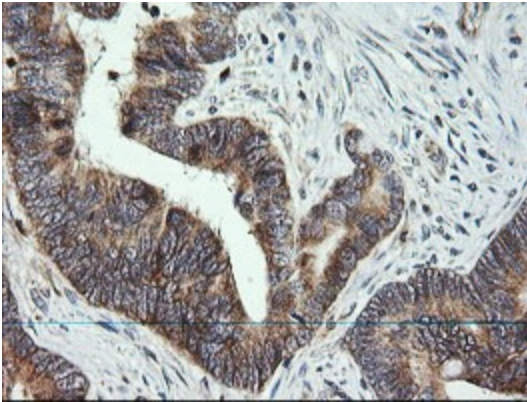
HEK293T cells were transfected with the pCMV6-ENTRY control (Cat# [PS100001], Left lane) or pCMV6-ENTRY MRPS34 (Cat# [RC200834], Right lane) cDNA for 48 hrs and lysed. Equivalent amounts of cell lysates (5 ug per lane) were separated by SDS-PAGE and immunoblotted with anti-MRPS34 (Cat# [TA505229]). Positive lysates [LY411441] (100ug) and [LC411441] (20ug) can be purchased separately from OriGene.



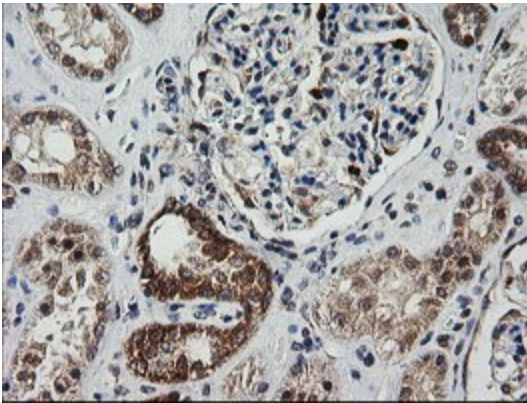
Western blot analysis of extracts (35ug) from 9 different cell lines by using anti-MRPS34 monoclonal antibody (HepG2: human; HeLa: human; SVT2: mouse; A549: human; COS7: monkey; Jurkat: human; MDCK: canine; PC12: rat; MCF7: human).



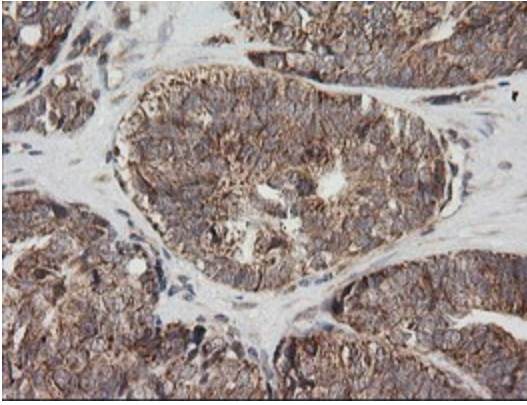
Immunohistochemical staining of paraffin-embedded Human colon tissue within the normal limits using anti-MRPS34 mouse monoclonal antibody. (Heat-induced epitope retrieval by 10mM citric buffer, pH6.0, 100°C for 10min, [TA505229])



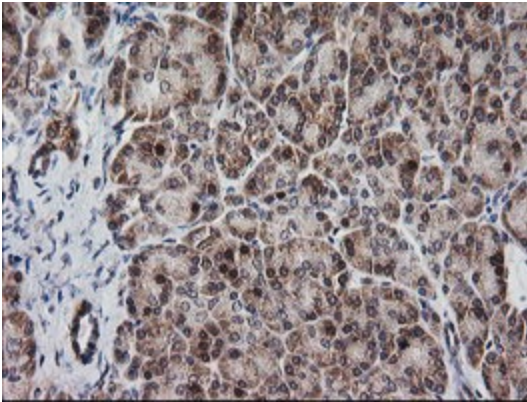
Immunohistochemical staining of paraffin-embedded Adenocarcinoma of Human colon tissue using anti-MRPS34 mouse monoclonal antibody. (Heat-induced epitope retrieval by 10mM citric buffer, pH6.0, 100°C for 10min, [TA505229])



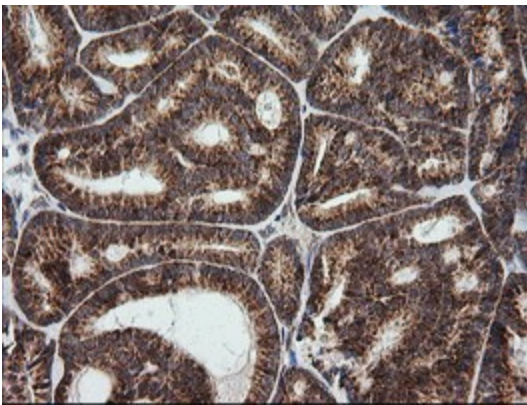
Immunohistochemical staining of paraffin-embedded Human Kidney tissue within the normal limits using anti-MRPS34 mouse monoclonal antibody. (Heat-induced epitope retrieval by 10mM citric buffer, pH6.0, 100°C for 10min, [TA505229])



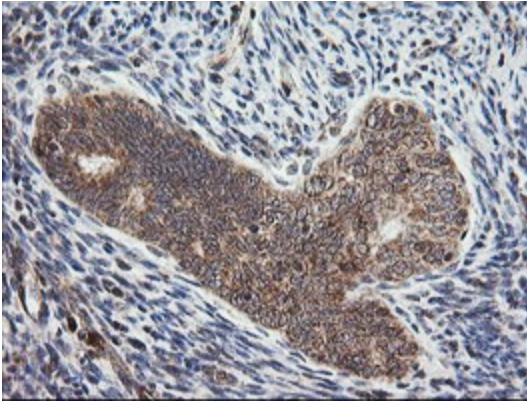
Immunohistochemical staining of paraffin-embedded Adenocarcinoma of Human ovary tissue using anti-MRPS34 mouse monoclonal antibody. (Heat-induced epitope retrieval by 10mM citric buffer, pH6.0, 100°C for 10min, [TA505229])



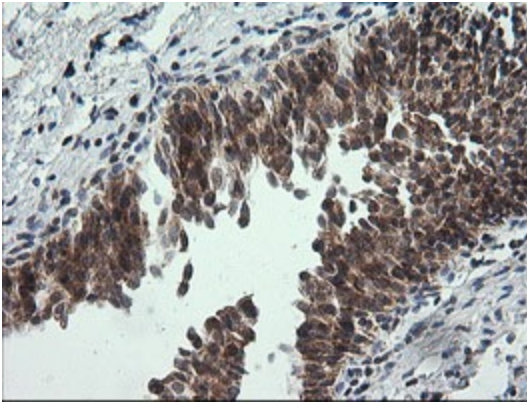
Immunohistochemical staining of paraffin-embedded Human pancreas tissue within the normal limits using anti-MRPS34 mouse monoclonal antibody. (Heat-induced epitope retrieval by 10mM citric buffer, pH6.0, 100°C for 10min, [TA505229])



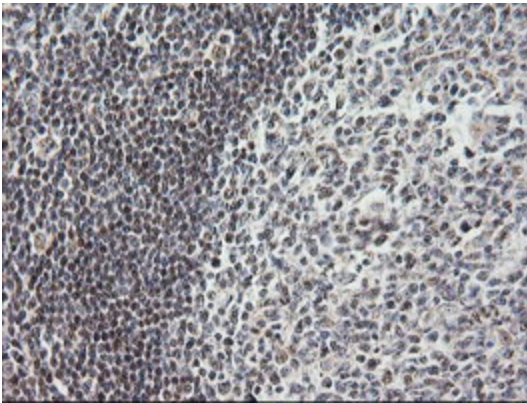
Immunohistochemical staining of paraffin-embedded Carcinoma of Human thyroid tissue using anti-MRPS34 mouse monoclonal antibody. (Heat-induced epitope retrieval by 10mM citric buffer, pH6.0, 100°C for 10min, [TA505229])



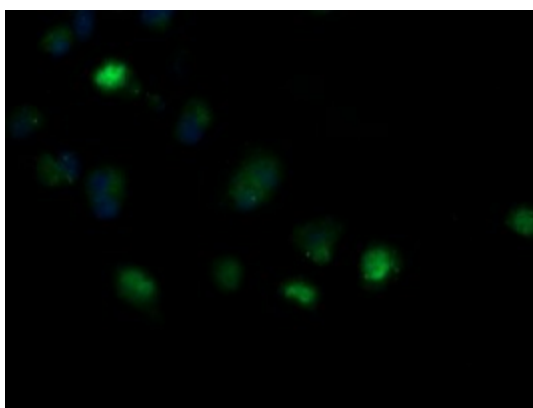
Immunohistochemical staining of paraffin-embedded Adenocarcinoma of Human endometrium tissue using anti-MRPS34 mouse monoclonal antibody. (Heat-induced epitope retrieval by 10mM citric buffer, pH6.0, 100°C for 10min, [TA505229])



Immunohistochemical staining of paraffin-embedded Human bladder tissue within the normal limits using anti-MRPS34 mouse monoclonal antibody. (Heat-induced epitope retrieval by 10mM citric buffer, pH6.0, 100°C for 10min, [TA505229])



Immunohistochemical staining of paraffin-embedded Human tonsil within the normal limits using anti-MRPS34 mouse monoclonal antibody. (Heat-induced epitope retrieval by 10mM citric buffer, pH6.0, 100°C for 10min, [TA505229])



Anti-MRPS34 mouse monoclonal antibody ([TA505229]) immunofluorescent staining of COS7 cells transiently transfected by pCMV6-ENTRY MRPS34 ([RC200834]).