

Product datasheet for **TA505215M**

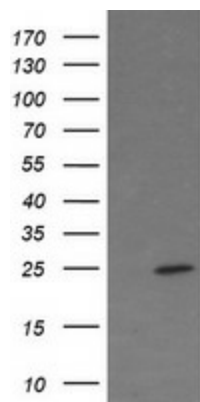
FATE1 Mouse Monoclonal Antibody [Clone ID: OTI6F10]

Product data:

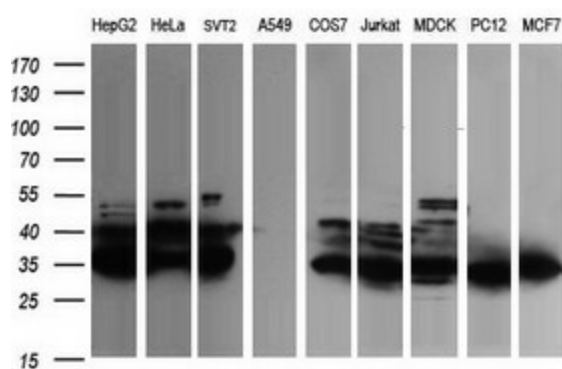
Product Type:	Primary Antibodies
Clone Name:	OTI6F10
Applications:	IF, WB
Recommended Dilution:	WB 1:200~4000, IF 1:100
Reactivity:	Human, Dog, Rat, Monkey, Mouse
Host:	Mouse
Isotype:	IgG1
Clonality:	Monoclonal
Immunogen:	Full length human recombinant protein of human FATE1(NP_001756) produced in HEK293T cell.
Formulation:	PBS (pH 7.3) containing 1% BSA, 50% glycerol and 0.02% sodium azide.
Concentration:	1 mg/ml
Purification:	Purified from mouse ascites fluids or tissue culture supernatant by affinity chromatography (protein A/G)
Conjugation:	Unconjugated
Storage:	Store at -20°C as received.
Stability:	Stable for 12 months from date of receipt.
Predicted Protein Size:	20.5 kDa
Gene Name:	fetal and adult testis expressed 1
Database Link:	NP_149076 Entrez Gene 77905 Mouse Entrez Gene 481076 Dog Entrez Gene 704368 Monkey Entrez Gene 89885 Human Q969F0
Synonyms:	CT43; FATE
Protein Families:	Transmembrane


[View online »](#)

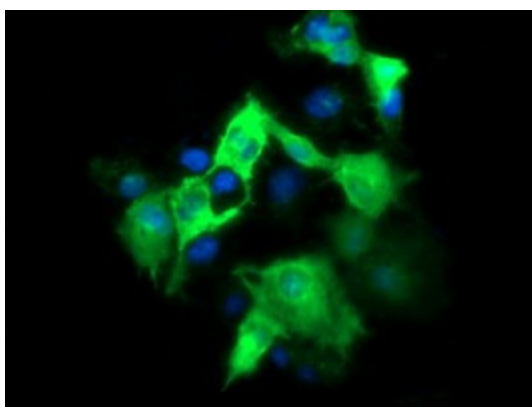
Product images:



HEK293T cells were transfected with the pCMV6-ENTRY control (Left lane) or pCMV6-ENTRY FATE1 ([RC205951], Right lane) cDNA for 48 hrs and lysed. Equivalent amounts of cell lysates (5 ug per lane) were separated by SDS-PAGE and immunoblotted with anti-FATE1. Positive lysates [LY409735] (100ug) and [LC409735] (20ug) can be purchased separately from OriGene.



Western blot analysis of extracts (35ug) from 9 different cell lines by using anti-FATE1 monoclonal antibody (HepG2: human; HeLa: human; SVT2: mouse; A549: human; COS7: monkey; Jurkat: human; MDCK: canine; PC12: rat; MCF7: human).



Anti-FATE1 mouse monoclonal antibody ([TA505215]) immunofluorescent staining of COS7 cells transiently transfected by pCMV6-ENTRY FATE1 ([RC205951]).