

Product datasheet for **TA505209AM**

p15 INK4b (CDKN2B) Mouse Monoclonal Antibody (Biotin conjugated) [Clone ID: OTI1H5]

Product data:

Product Type:	Primary Antibodies
Clone Name:	OTI1H5
Applications:	FC, WB
Recommended Dilution:	WB 1:2000, FLOW 1:100
Reactivity:	Human, Mouse, Rat
Host:	Mouse
Isotype:	IgG1
Clonality:	Monoclonal
Immunogen:	Full length human recombinant protein of human CDKN2B(NP_004927) produced in HEK293T cell.
Formulation:	PBS (pH 7.3) containing 1% BSA, 50% glycerol and 0.02% sodium azide.
Concentration:	0.5 mg/ml
Purification:	Purified from mouse ascites fluids or tissue culture supernatant by affinity chromatography (protein A/G)
Conjugation:	Biotin
Storage:	Store at -20°C as received.
Stability:	Stable for 12 months from date of receipt.
Predicted Protein Size:	14.5 kDa
Gene Name:	cyclin dependent kinase inhibitor 2B
Database Link:	NP_004927 Entrez Gene 12579 Mouse Entrez Gene 25164 Rat Entrez Gene 1030 Human P42772



[View online »](#)

Background:

This gene lies adjacent to the tumor suppressor gene CDKN2A in a region that is frequently mutated and deleted in a wide variety of tumors. This gene encodes a cyclin-dependent kinase inhibitor, which forms a complex with CDK4 or CDK6, and prevents the activation of the CDK kinases, thus the encoded protein functions as a cell growth regulator that controls cell cycle G1 progression. The expression of this gene was found to be dramatically induced by TGF beta, which suggested its role in the TGF beta induced growth inhibition. Two alternatively spliced transcript variants of this gene, which encode distinct proteins, have been reported. [provided by RefSeq]

Synonyms:

CDK4I; INK4B; MTS2; P15; p15INK4b; TP15

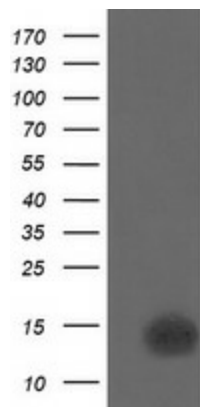
Protein Families:

Druggable Genome

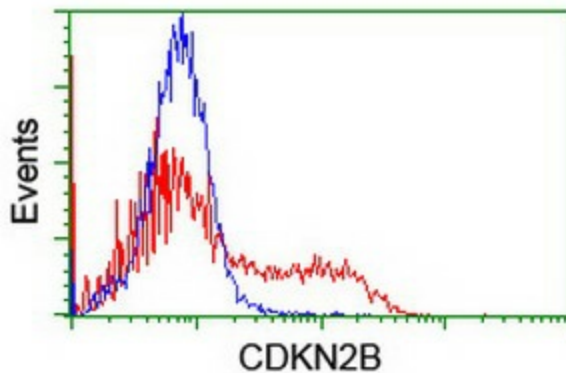
Protein Pathways:

Cell cycle, Pathways in cancer, Small cell lung cancer, TGF-beta signaling pathway

Product images:



HEK293T cells were transfected with the pCMV6-ENTRY control (Left lane) or pCMV6-ENTRY CDKN2B ([RC204895], Right lane) cDNA for 48 hrs and lysed. Equivalent amounts of cell lysates (5 ug per lane) were separated by SDS-PAGE and immunoblotted with anti-CDKN2B. Positive lysates [LY417638] (100ug) and [LC417638] (20ug) can be purchased separately from OriGene.



HEK293T cells transfected with either [RC204895] overexpress plasmid (Red) or empty vector control plasmid (Blue) were immunostained by anti-CDKN2B antibody ([TA505209]), and then analyzed by flow cytometry.