

## Product datasheet for **TA505204S**

### OTUB1 Mouse Monoclonal Antibody [Clone ID: OTI5F7]

#### Product data:

Product Type:	Primary Antibodies
Clone Name:	OTI5F7
Applications:	IHC, WB
Recommended Dilution:	WB 1:2000, IHC 1:150
Reactivity:	Human, Rat
Host:	Mouse
Isotype:	IgG2a
Clonality:	Monoclonal
Immunogen:	Full length human recombinant protein of human OTUB1(NP_060140) produced in HEK293T cell.
Formulation:	PBS (pH 7.3) containing 1% BSA, 50% glycerol and 0.02% sodium azide.
Concentration:	1 mg/ml
Purification:	Purified from mouse ascites fluids or tissue culture supernatant by affinity chromatography (protein A/G)
Conjugation:	Unconjugated
Storage:	Store at -20°C as received.
Stability:	Stable for 12 months from date of receipt.
Predicted Protein Size:	31.1 kDa
Gene Name:	OTU deubiquitinase, ubiquitin aldehyde binding 1
Database Link:	<a href="#">NP_060140</a> <a href="#">Entrez Gene 293705 Rat</a> <a href="#">Entrez Gene 55611 Human</a> <a href="#">Q96FW1</a>



[View online »](#)

**Background:**

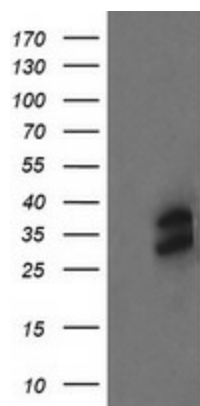
The product of this gene is a member of the OTU (ovarian tumor) superfamily of predicted cysteine proteases. The encoded protein is a highly specific ubiquitin iso-peptidase, and cleaves ubiquitin from branched poly-ubiquitin chains but not from ubiquitinated substrates. It interacts with another ubiquitin protease and an E3 ubiquitin ligase that inhibits cytokine gene transcription in the immune system. It is proposed to function in specific ubiquitin-dependent pathways, possibly by providing an editing function for polyubiquitin chain growth. Alternative splicing results in multiple transcript variants. [provided by RefSeq]

**Synonyms:**

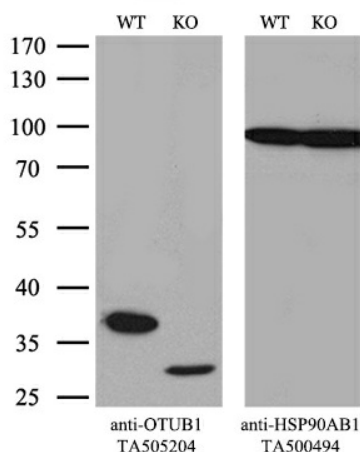
HSPC263; OTB1; OTU1

**Protein Families:**

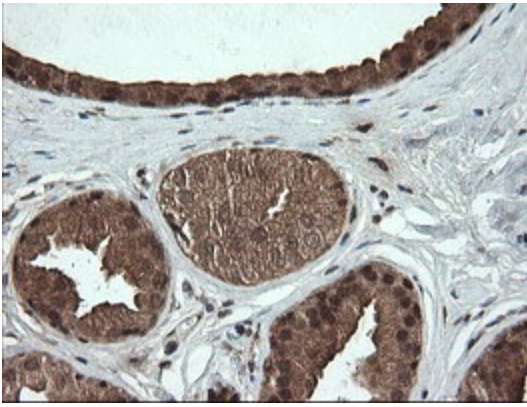
Protease

**Product images:**


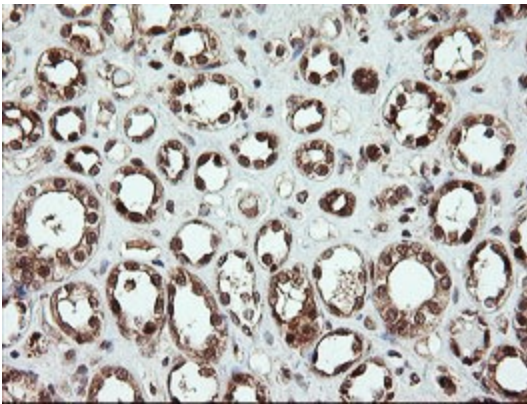
HEK293T cells were transfected with the pCMV6-ENTRY control (Left lane) or pCMV6-ENTRY OTUB1 ([RC210648], Right lane) cDNA for 48 hrs and lysed. Equivalent amounts of cell lysates (5 ug per lane) were separated by SDS-PAGE and immunoblotted with anti-OTUB1. Positive lysates [LY402607] (100ug) and [LC402607] (20ug) can be purchased separately from OriGene.



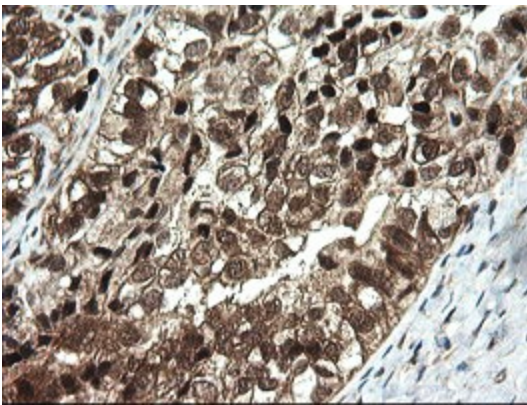
Equivalent amounts of cell lysates (10 ug per lane) of wild-type 293T cells (WT, Cat# LC810293T) and OTUB1-Knockout 293T cells (KO, Cat# [LC810883]) were separated by SDS-PAGE and immunoblotted with anti-OTUB1 monoclonal antibody [TA505204], (1:500). Then the blotted membrane was stripped and reprobed with anti-HSP90AB1 antibody ([TA500494]) as a loading control.



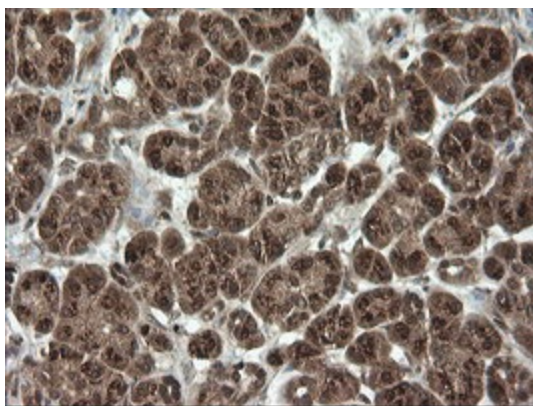
Immunohistochemical staining of paraffin-embedded Human breast tissue within the normal limits using anti-OTUB1 mouse monoclonal antibody. (Heat-induced epitope retrieval by 10mM citric buffer, pH6.0, 100°C for 10min, [TA505204])



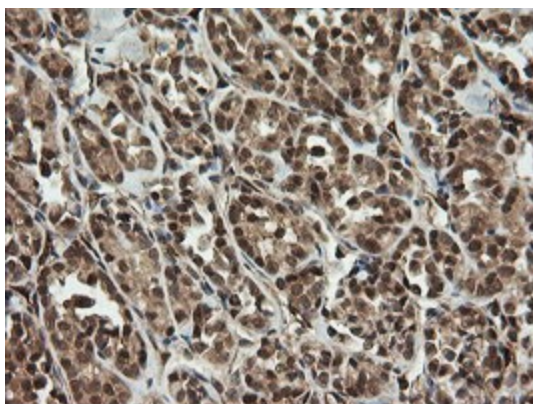
Immunohistochemical staining of paraffin-embedded Human Kidney tissue within the normal limits using anti-OTUB1 mouse monoclonal antibody. (Heat-induced epitope retrieval by 10mM citric buffer, pH6.0, 100°C for 10min, [TA505204])



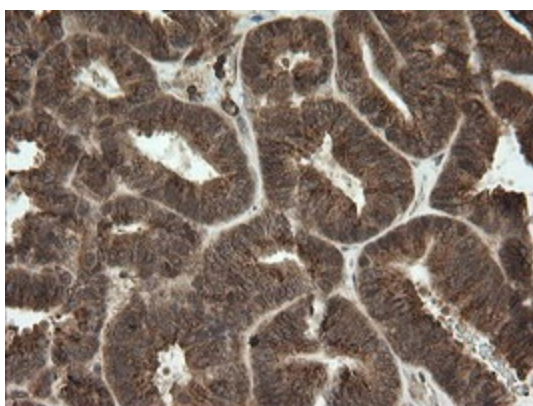
Immunohistochemical staining of paraffin-embedded Adenocarcinoma of Human ovary tissue using anti-OTUB1 mouse monoclonal antibody. (Heat-induced epitope retrieval by 10mM citric buffer, pH6.0, 100°C for 10min, [TA505204])



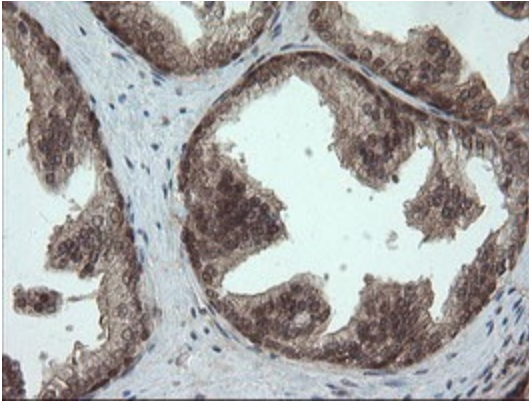
Immunohistochemical staining of paraffin-embedded Human pancreas tissue within the normal limits using anti-OTUB1 mouse monoclonal antibody. (Heat-induced epitope retrieval by 10mM citric buffer, pH6.0, 100°C for 10min, [TA505204])



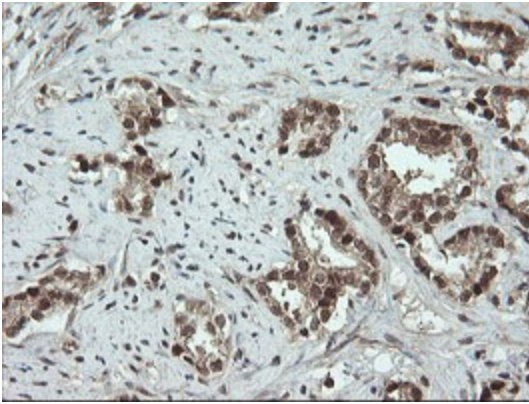
Immunohistochemical staining of paraffin-embedded Carcinoma of Human thyroid tissue using anti-OTUB1 mouse monoclonal antibody. (Heat-induced epitope retrieval by 10mM citric buffer, pH6.0, 100°C for 10min, [TA505204])



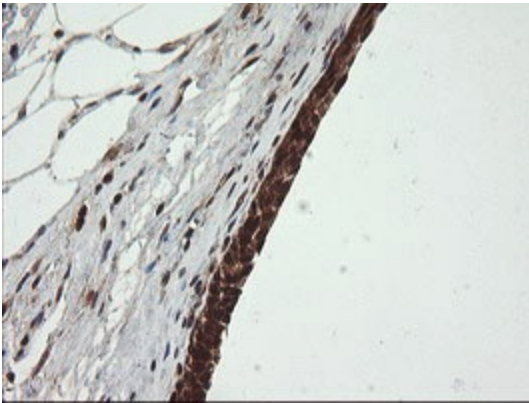
Immunohistochemical staining of paraffin-embedded Adenocarcinoma of Human endometrium tissue using anti-OTUB1 mouse monoclonal antibody. (Heat-induced epitope retrieval by 10mM citric buffer, pH6.0, 100°C for 10min, [TA505204])



Immunohistochemical staining of paraffin-embedded Human prostate tissue within the normal limits using anti-OTUB1 mouse monoclonal antibody. (Heat-induced epitope retrieval by 10mM citric buffer, pH6.0, 100°C for 10min, [TA505204])



Immunohistochemical staining of paraffin-embedded Carcinoma of Human prostate tissue using anti-OTUB1 mouse monoclonal antibody. (Heat-induced epitope retrieval by 10mM citric buffer, pH6.0, 100°C for 10min, [TA505204])



Immunohistochemical staining of paraffin-embedded Human bladder tissue within the normal limits using anti-OTUB1 mouse monoclonal antibody. (Heat-induced epitope retrieval by 10mM citric buffer, pH6.0, 100°C for 10min, [TA505204])