

## Product datasheet for **TA505189BM**

### CGI 62 (ZC2HC1A) Mouse Monoclonal Antibody (HRP conjugated) [Clone ID: OTI4B5]

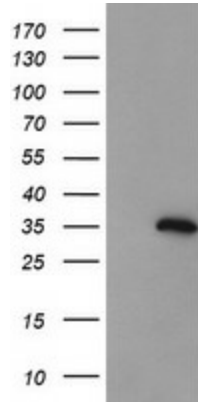
#### Product data:

|                         |   |
|-------------------------|---|
| Product Type:           | Primary Antibodies  |
| Clone Name:             | OTI4B5  |
| Applications:           | IHC, WB   |
| Recommended Dilution:   | WB 1:2000, IHC 1:150  |
| Reactivity:             | Human, Mouse, Rat   |
| Host:                   | Mouse   |
| Isotype:                | IgG1  |
| Clonality:              | Monoclonal  |
| Immunogen:              | Full length human recombinant protein of human FAM164A(NP_057094) produced in E.coli.   |
| Formulation:            | PBS (pH 7.3) containing 1% BSA, 50% glycerol.   |
| Concentration:          | 0.5 mg/ml   |
| Purification:           | Purified from mouse ascites fluids or tissue culture supernatant by affinity chromatography (protein A/G)                             |
| Conjugation:            | HRP   |
| Storage:                | Store at -20°C as received.   |
| Stability:              | Stable for 12 months from date of receipt.  |
| Predicted Protein Size: | 34.9 kDa  |
| Gene Name:              | zinc finger C2HC-type containing 1A   |
| Database Link:          | <a href="#">NP_057094</a><br><a href="#">Entrez Gene 310244 Rat</a> <a href="#">Entrez Gene 51101 Human</a><br><a href="#">Q96GY0</a> |
| Synonyms:               | C8orf70; CGI-62; FAM164A  |

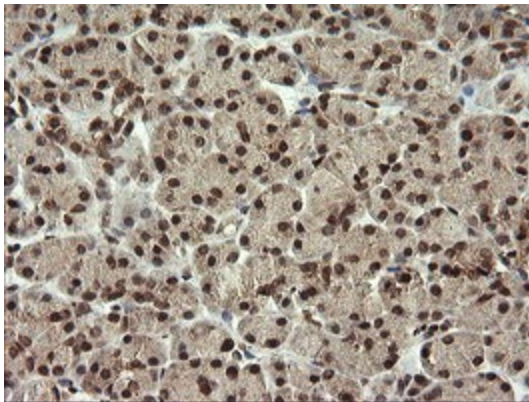


[View online »](#)

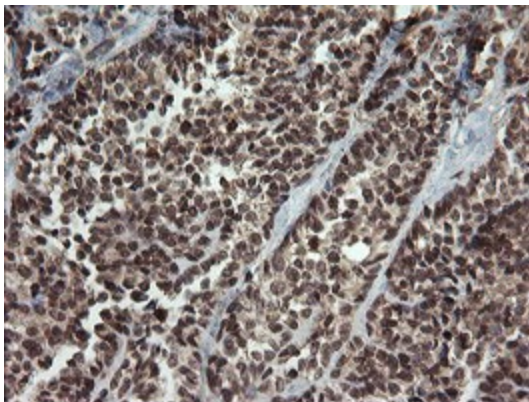
**Product images:**



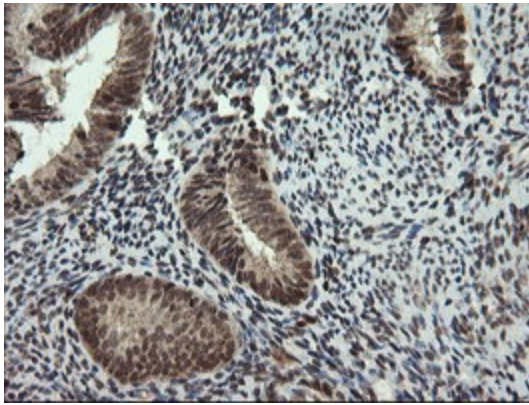
HEK293T cells were transfected with the pCMV6-ENTRY control (Left lane) or pCMV6-ENTRY FAM164A ([RC201868], Right lane) cDNA for 48 hrs and lysed. Equivalent amounts of cell lysates (5 ug per lane) were separated by SDS-PAGE and immunoblotted with anti-FAM164A. Positive lysates [LY414251] (100ug) and [LC414251] (20ug) can be purchased separately from OriGene.



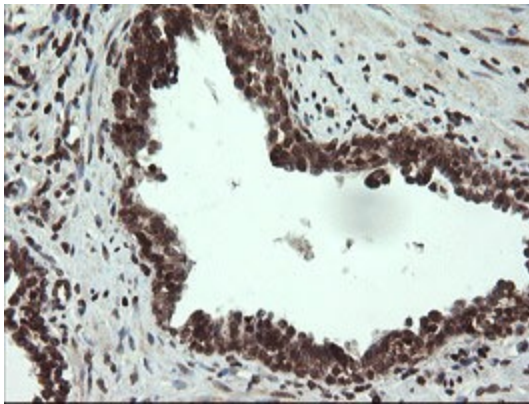
Immunohistochemical staining of paraffin-embedded Human pancreas tissue within the normal limits using anti-FAM164A mouse monoclonal antibody. (Heat-induced epitope retrieval by 10mM citric buffer, pH6.0, 100°C for 10min, [TA505189])



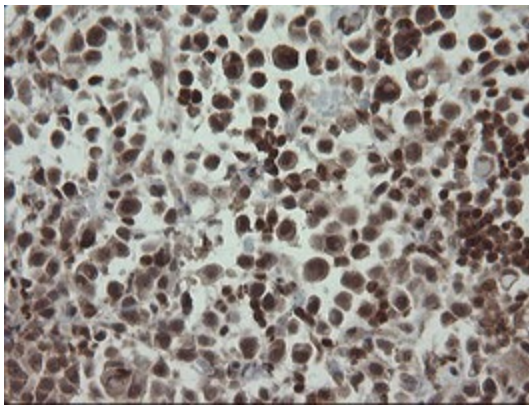
Immunohistochemical staining of paraffin-embedded Carcinoma of Human thyroid tissue using anti-FAM164A mouse monoclonal antibody. (Heat-induced epitope retrieval by 10mM citric buffer, pH6.0, 100°C for 10min, [TA505189])



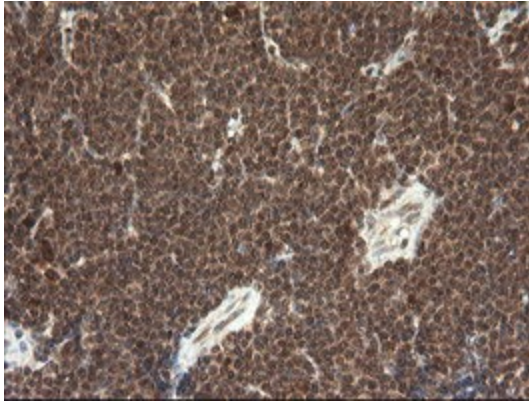
Immunohistochemical staining of paraffin-embedded Human endometrium tissue within the normal limits using anti-FAM164A mouse monoclonal antibody. (Heat-induced epitope retrieval by 10mM citric buffer, pH6.0, 100°C for 10min, [TA505189])



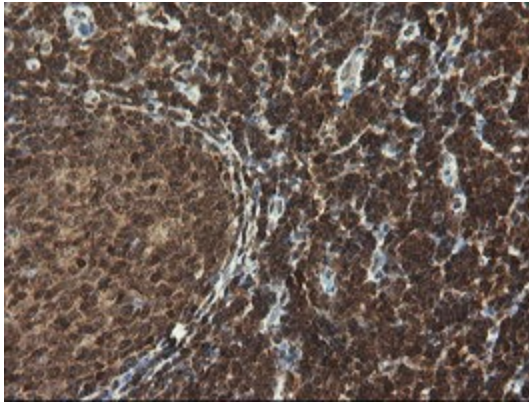
Immunohistochemical staining of paraffin-embedded Carcinoma of Human prostate tissue using anti-FAM164A mouse monoclonal antibody. (Heat-induced epitope retrieval by 10mM citric buffer, pH6.0, 100°C for 10min, [TA505189])



Immunohistochemical staining of paraffin-embedded Carcinoma of Human bladder tissue using anti-FAM164A mouse monoclonal antibody. (Heat-induced epitope retrieval by 10mM citric buffer, pH6.0, 100°C for 10min, [TA505189])



Immunohistochemical staining of paraffin-embedded Human lymphoma tissue using anti-FAM164A mouse monoclonal antibody. (Heat-induced epitope retrieval by 10mM citric buffer, pH6.0, 100°C for 10min, [TA505189])



Immunohistochemical staining of paraffin-embedded Human tonsil within the normal limits using anti-FAM164A mouse monoclonal antibody. (Heat-induced epitope retrieval by 10mM citric buffer, pH6.0, 100°C for 10min, [TA505189])