

Product datasheet for **TA505189AM**

CGI 62 (ZC2HC1A) Mouse Monoclonal Antibody (Biotin conjugated) [Clone ID: OTI4B5]

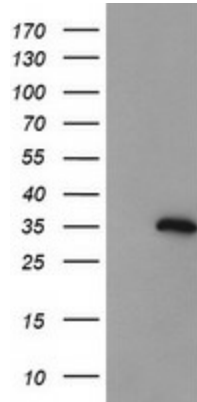
Product data:

Product Type:	Primary Antibodies
Clone Name:	OTI4B5
Applications:	IHC, WB
Recommended Dilution:	WB 1:2000, IHC 1:150
Reactivity:	Human, Mouse, Rat
Host:	Mouse
Isotype:	IgG1
Clonality:	Monoclonal
Immunogen:	Full length human recombinant protein of human FAM164A(NP_057094) produced in E.coli.
Formulation:	PBS (pH 7.3) containing 1% BSA, 50% glycerol and 0.02% sodium azide.
Concentration:	0.5 mg/ml
Purification:	Purified from mouse ascites fluids or tissue culture supernatant by affinity chromatography (protein A/G)
Conjugation:	Biotin
Storage:	Store at -20°C as received.
Stability:	Stable for 12 months from date of receipt.
Predicted Protein Size:	34.9 kDa
Gene Name:	zinc finger C2HC-type containing 1A
Database Link:	NP_057094 Entrez Gene 310244 Rat Entrez Gene 51101 Human Q96GY0
Synonyms:	C8orf70; CGI-62; FAM164A

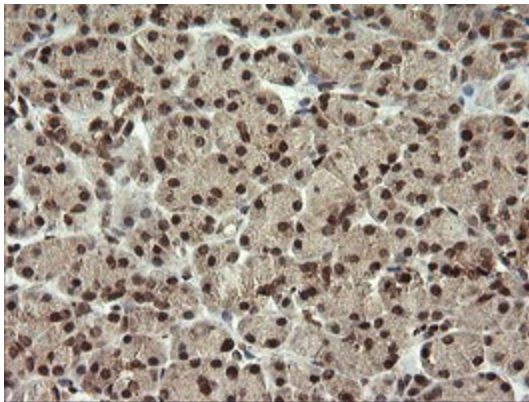


[View online »](#)

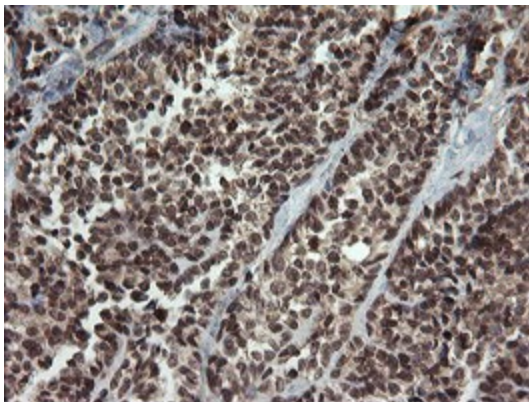
Product images:



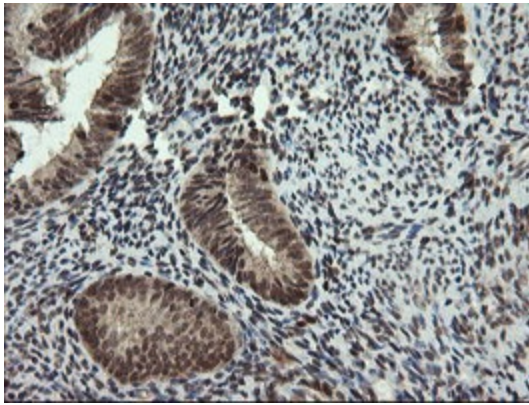
HEK293T cells were transfected with the pCMV6-ENTRY control (Left lane) or pCMV6-ENTRY FAM164A ([RC201868], Right lane) cDNA for 48 hrs and lysed. Equivalent amounts of cell lysates (5 ug per lane) were separated by SDS-PAGE and immunoblotted with anti-FAM164A. Positive lysates [LY414251] (100ug) and [LC414251] (20ug) can be purchased separately from OriGene.



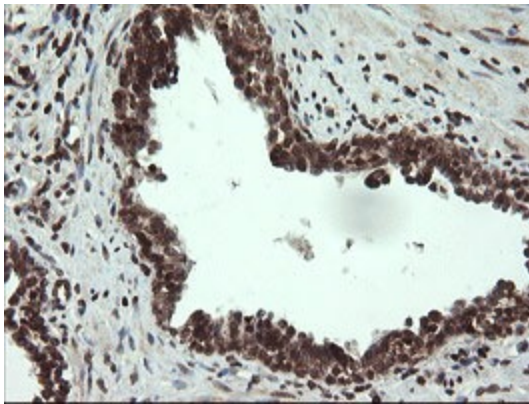
Immunohistochemical staining of paraffin-embedded Human pancreas tissue within the normal limits using anti-FAM164A mouse monoclonal antibody. (Heat-induced epitope retrieval by 10mM citric buffer, pH6.0, 100°C for 10min, [TA505189])



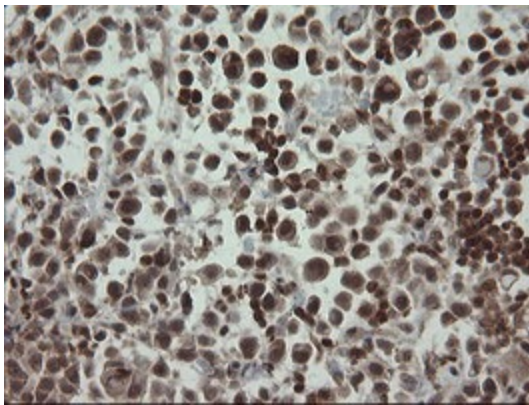
Immunohistochemical staining of paraffin-embedded Carcinoma of Human thyroid tissue using anti-FAM164A mouse monoclonal antibody. (Heat-induced epitope retrieval by 10mM citric buffer, pH6.0, 100°C for 10min, [TA505189])



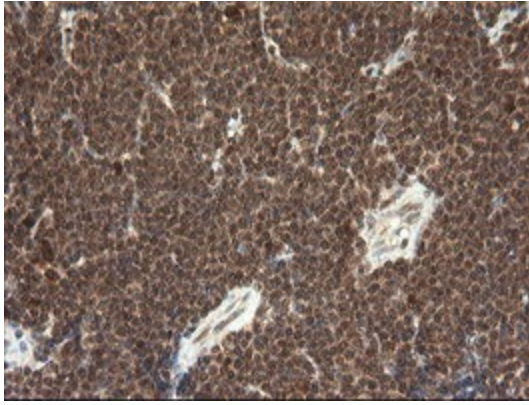
Immunohistochemical staining of paraffin-embedded Human endometrium tissue within the normal limits using anti-FAM164A mouse monoclonal antibody. (Heat-induced epitope retrieval by 10mM citric buffer, pH6.0, 100°C for 10min, [TA505189])



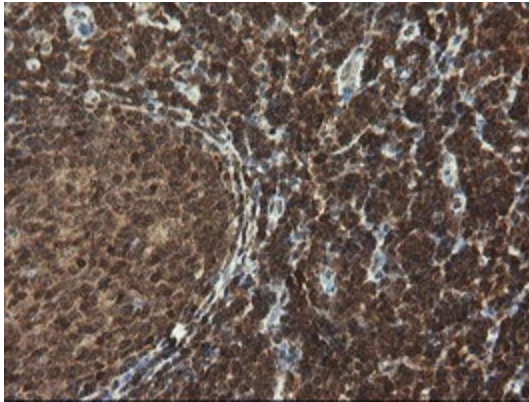
Immunohistochemical staining of paraffin-embedded Carcinoma of Human prostate tissue using anti-FAM164A mouse monoclonal antibody. (Heat-induced epitope retrieval by 10mM citric buffer, pH6.0, 100°C for 10min, [TA505189])



Immunohistochemical staining of paraffin-embedded Carcinoma of Human bladder tissue using anti-FAM164A mouse monoclonal antibody. (Heat-induced epitope retrieval by 10mM citric buffer, pH6.0, 100°C for 10min, [TA505189])



Immunohistochemical staining of paraffin-embedded Human lymphoma tissue using anti-FAM164A mouse monoclonal antibody. (Heat-induced epitope retrieval by 10mM citric buffer, pH6.0, 100°C for 10min, [TA505189])



Immunohistochemical staining of paraffin-embedded Human tonsil within the normal limits using anti-FAM164A mouse monoclonal antibody. (Heat-induced epitope retrieval by 10mM citric buffer, pH6.0, 100°C for 10min, [TA505189])