

## Product datasheet for **TA505187AM**

### UBE2S Mouse Monoclonal Antibody (Biotin conjugated) [Clone ID: OTI4H3]

#### Product data:

Product Type:	Primary Antibodies
Clone Name:	OTI4H3
Applications:	FC, IF, WB
Recommended Dilution:	WB 1:200~2000, IF 1:100, FLOW 1:100
Reactivity:	Human, Monkey, Mouse, Rat
Host:	Mouse
Isotype:	IgG1
Clonality:	Monoclonal
Immunogen:	Full length human recombinant protein of human UBE2S(NP_055316) produced in E.coli.
Formulation:	PBS (pH 7.3) containing 1% BSA, 50% glycerol and 0.02% sodium azide.
Concentration:	0.5 mg/ml
Purification:	Purified from mouse ascites fluids or tissue culture supernatant by affinity chromatography (protein A/G)
Conjugation:	Biotin
Storage:	Store at -20°C as received.
Stability:	Stable for 12 months from date of receipt.
Predicted Protein Size:	23.7 kDa
Gene Name:	ubiquitin conjugating enzyme E2 S
Database Link:	<a href="#">NP_055316</a> <a href="#">Entrez Gene 77891 Mouse</a> <a href="#">Entrez Gene 292588 Rat</a> <a href="#">Entrez Gene 700592 Monkey</a> <a href="#">Entrez Gene 27338 Human</a> <a href="#">Q16763</a>
Background:	This gene encodes a member of the ubiquitin-conjugating enzyme family. The encoded protein is able to form a thiol ester linkage with ubiquitin in a ubiquitin activating enzyme-dependent manner, a characteristic property of ubiquitin carrier proteins. [provided by RefSeq, Jul 2008]
Synonyms:	E2-EPF; E2EPF; EPF5

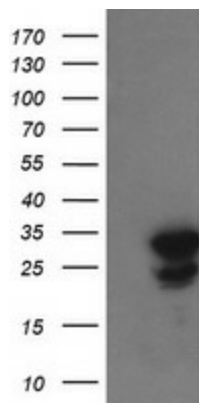


[View online »](#)

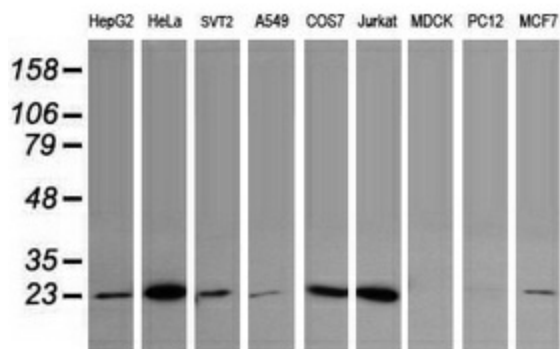
**Protein Families:** Druggable Genome

**Protein Pathways:** Ubiquitin mediated proteolysis

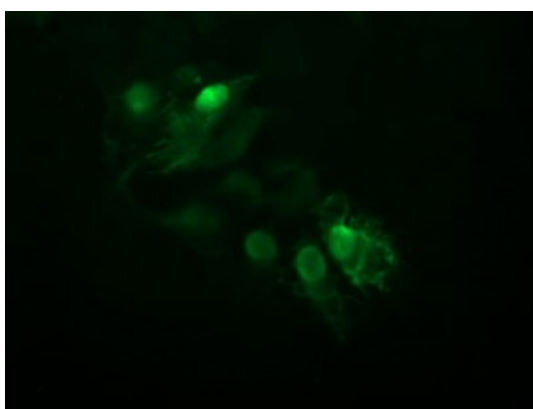
**Product images:**



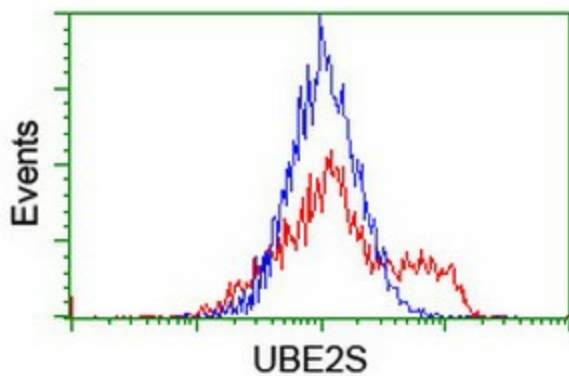
HEK293T cells were transfected with the pCMV6-ENTRY control (Cat# [PS100001], Left lane) or pCMV6-ENTRY UBE2S (Cat# [RC224851], Right lane) cDNA for 48 hrs and lysed. Equivalent amounts of cell lysates (5 ug per lane) were separated by SDS-PAGE and immunoblotted with anti-UBE2S (Cat# [TA505187]). Positive lysates [LY402342] (100ug) and [LC402342] (20ug) can be purchased separately from OriGene.



Western blot analysis of extracts (35ug) from 9 different cell lines by using anti-UBE2S monoclonal antibody (HepG2: human; HeLa: human; SVT2: mouse; A549: human; COS7: monkey; Jurkat: human; MDCK: canine; PC12: rat; MCF7: human).



Anti-UBE2S mouse monoclonal antibody ([TA505187]) immunofluorescent staining of COS7 cells transiently transfected by pCMV6-ENTRY UBE2S ([RC224851]).



HEK293T cells transfected with either [RC224851] overexpress plasmid (Red) or empty vector control plasmid (Blue) were immunostained by anti-UBE2S antibody ([TA505187]), and then analyzed by flow cytometry.