

## Product datasheet for **TA505180S**

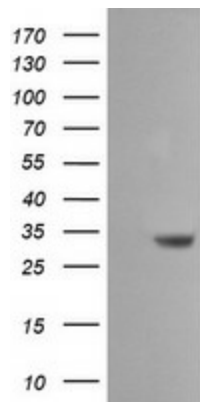
### SDSL Mouse Monoclonal Antibody [Clone ID: OTI1G4]

#### Product data:

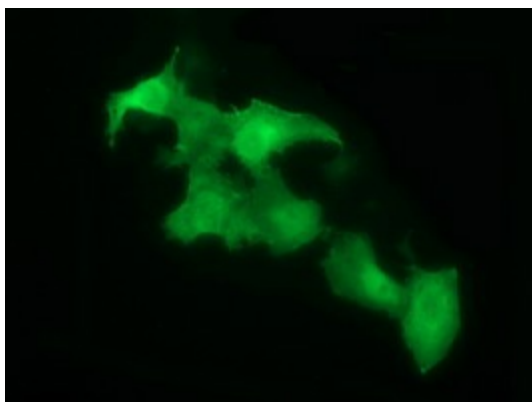
|                       |   |
|-----------------------|---|
| Product Type:         | Primary Antibodies  |
| Clone Name:           | OTI1G4  |
| Applications:         | IF, WB  |
| Recommended Dilution: | WB 1:4000, IF 1:100   |
| Reactivity:           | Human   |
| Host:                 | Mouse   |
| Isotype:              | IgG1  |
| Clonality:            | Monoclonal  |
| Immunogen:            | Full length human recombinant protein of human SDSL(NP_612441) produced in HEK293T cell.                  |
| Formulation:          | PBS (pH 7.3) containing 1% BSA, 50% glycerol and 0.02% sodium azide.                                      |
| Concentration:        | 1 mg/ml   |
| Purification:         | Purified from mouse ascites fluids or tissue culture supernatant by affinity chromatography (protein A/G) |
| Conjugation:          | Unconjugated  |
| Storage:              | Store at -20°C as received.   |
| Stability:            | Stable for 12 months from date of receipt.  |
| Gene Name:            | serine dehydratase like   |
| Database Link:        | <a href="#">NP_612441</a><br><a href="#">Entrez Gene 113675 Human</a><br><a href="#">Q96GA7</a>           |
| Synonyms:             | cSDH; SDH 2; SDS-RS1; TDH   |



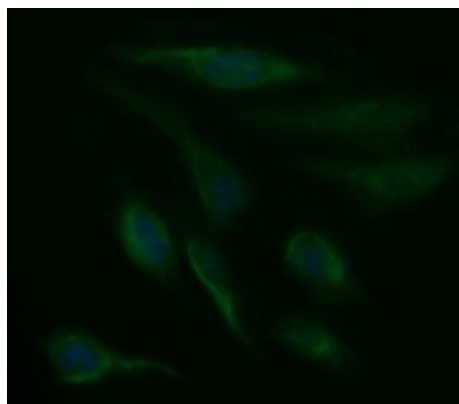
[View online »](#)

**Product images:**

HEK293T cells were transfected with the pCMV6-ENTRY control (Left lane) or pCMV6-ENTRY SDSL ([RC203515], Right lane) cDNA for 48 hrs and lysed. Equivalent amounts of cell lysates (5 ug per lane) were separated by SDS-PAGE and immunoblotted with anti-SDSL. Positive lysates [LY408687] (100ug) and [LC408687] (20ug) can be purchased separately from OriGene.



Anti-SDSL mouse monoclonal antibody ([TA505180]) immunofluorescent staining of COS7 cells transiently transfected by pCMV6-ENTRY SDSL ([RC203515]).



Immunofluorescent staining of HeLa cells using anti-SDSL mouse monoclonal antibody ([TA505180]).