

## Product datasheet for **TA505179S**

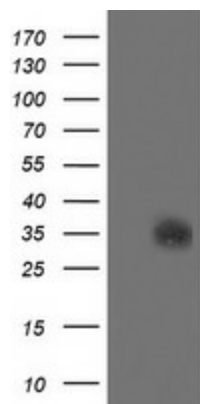
### SDSL Mouse Monoclonal Antibody [Clone ID: OTI1A8]

#### Product data:

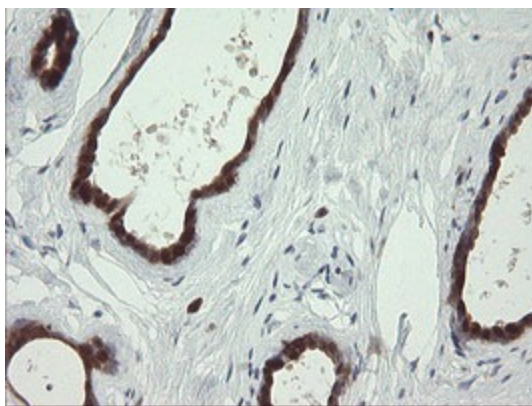
Product Type:	Primary Antibodies
Clone Name:	OTI1A8
Applications:	FC, IHC, WB
Recommended Dilution:	WB 1:2000, IHC 1:150, FLOW 1:100
Reactivity:	Human
Host:	Mouse
Isotype:	IgG1
Clonality:	Monoclonal
Immunogen:	Full length human recombinant protein of human SDSL(NP_612441) produced in HEK293T cell.
Formulation:	PBS (pH 7.3) containing 1% BSA, 50% glycerol and 0.02% sodium azide.
Concentration:	1 mg/ml
Purification:	Purified from mouse ascites fluids or tissue culture supernatant by affinity chromatography (protein A/G)
Conjugation:	Unconjugated
Storage:	Store at -20°C as received.
Stability:	Stable for 12 months from date of receipt.
Predicted Protein Size:	34.5 kDa
Gene Name:	serine dehydratase like
Database Link:	<a href="#">NP_612441</a> <a href="#">Entrez Gene 113675 Human</a> <a href="#">Q96GA7</a>
Synonyms:	cSDH; SDH 2; SDS-RS1; TDH



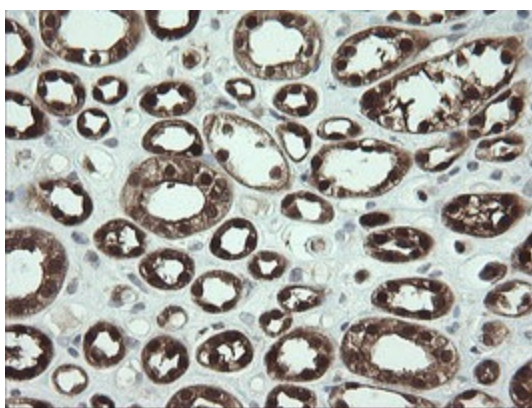
[View online »](#)

**Product images:**

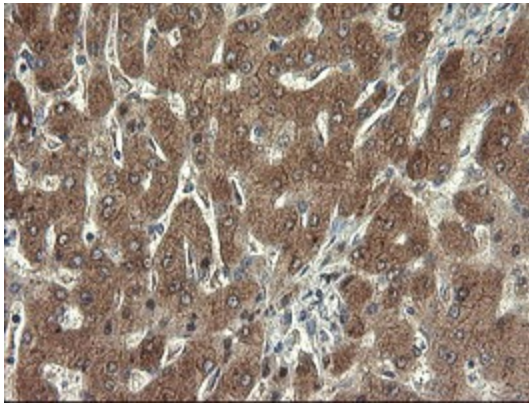
HEK293T cells were transfected with the pCMV6-ENTRY control (Cat# [PS100001], Left lane) or pCMV6-ENTRY SDSL (Cat# [RC203515], Right lane) cDNA for 48 hrs and lysed. Equivalent amounts of cell lysates (5 ug per lane) were separated by SDS-PAGE and immunoblotted with anti-SDSL (Cat# [TA505179]). Positive lysates [LY408687] (100ug) and [LC408687] (20ug) can be purchased separately from OriGene.



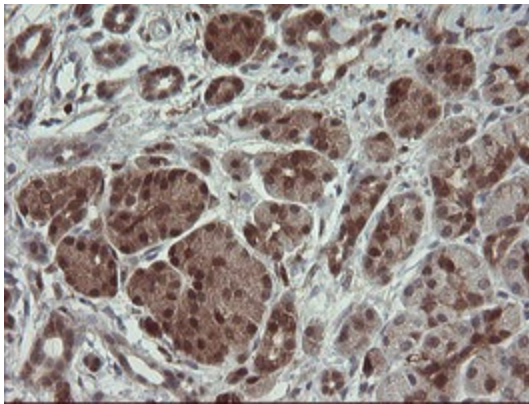
Immunohistochemical staining of paraffin-embedded Human breast tissue within the normal limits using anti-SDSL mouse monoclonal antibody. (Heat-induced epitope retrieval by 10mM citric buffer, pH6.0, 100°C for 10min, [TA505179])



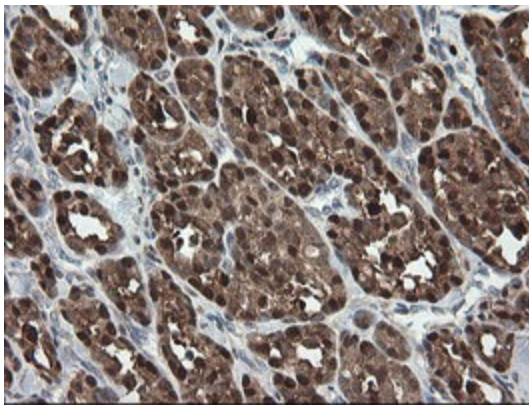
Immunohistochemical staining of paraffin-embedded Human Kidney tissue within the normal limits using anti-SDSL mouse monoclonal antibody. (Heat-induced epitope retrieval by 10mM citric buffer, pH6.0, 100°C for 10min, [TA505179])



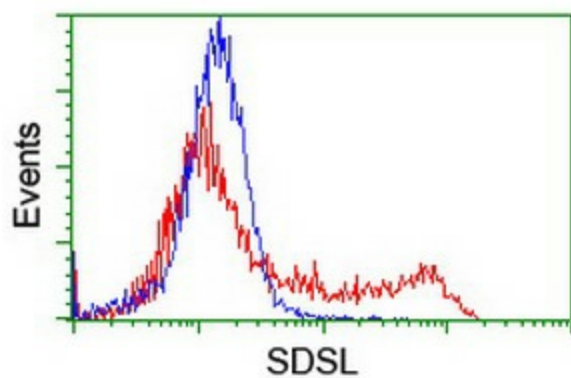
Immunohistochemical staining of paraffin-embedded Human liver tissue within the normal limits using anti-SDSL mouse monoclonal antibody. (Heat-induced epitope retrieval by 10mM citric buffer, pH6.0, 100°C for 10min, [TA505179])



Immunohistochemical staining of paraffin-embedded Human pancreas tissue within the normal limits using anti-SDSL mouse monoclonal antibody. (Heat-induced epitope retrieval by 10mM citric buffer, pH6.0, 100°C for 10min, [TA505179])



Immunohistochemical staining of paraffin-embedded Carcinoma of Human thyroid tissue using anti-SDSL mouse monoclonal antibody. (Heat-induced epitope retrieval by 10mM citric buffer, pH6.0, 100°C for 10min, [TA505179])



HEK293T cells transfected with either [RC203515] overexpress plasmid (Red) or empty vector control plasmid (Blue) were immunostained by anti-SDSL antibody ([TA505179]), and then analyzed by flow cytometry.