

## Product datasheet for **TA505176AM**

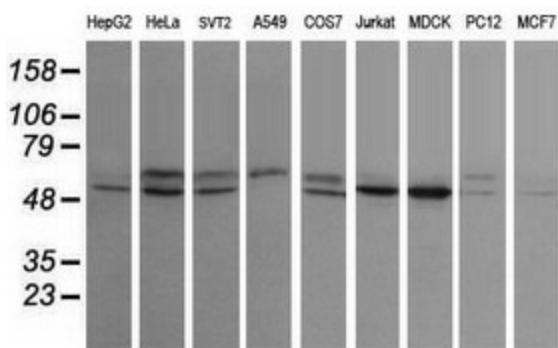
### STK38L Mouse Monoclonal Antibody (Biotin conjugated) [Clone ID: OTI4D8]

#### Product data:

Product Type:	Primary Antibodies
Clone Name:	OTI4D8
Applications:	IF, IHC, WB
Recommended Dilution:	WB 1:200~2000, IHC 1:150, IF 1:100
Reactivity:	Human, Dog, Rat, Monkey, Mouse
Host:	Mouse
Isotype:	IgG1
Clonality:	Monoclonal
Immunogen:	Human recombinant protein fragment corresponding to amino acids 1-281 of human STK38L(NP_055815) produced in E.coli.
Formulation:	PBS (pH 7.3) containing 1% BSA, 50% glycerol and 0.02% sodium azide.
Concentration:	0.5 mg/ml
Purification:	Purified from mouse ascites fluids or tissue culture supernatant by affinity chromatography (protein A/G)
Conjugation:	Biotin
Storage:	Store at -20°C as received.
Stability:	Stable for 12 months from date of receipt.
Predicted Protein Size:	53.8 kDa
Gene Name:	serine/threonine kinase 38 like
Database Link:	<a href="#">NP_055815</a> <a href="#">Entrez Gene 232533</a> <a href="#">MouseEntrez Gene 691337</a> <a href="#">RatEntrez Gene 477663</a> <a href="#">DogEntrez Gene 711047</a> <a href="#">MonkeyEntrez Gene 23012</a> <a href="#">Human Q9Y2H1</a>
Synonyms:	NDR2
Protein Families:	Druggable Genome, Protein Kinase



[View online »](#)

**Product images:**


Western blot analysis of extracts (35ug) from 9 different cell lines by using anti-STK38L monoclonal antibody (HepG2: human; HeLa: human; SVT2: mouse; A549: human; COS7: monkey; Jurkat: human; MDCK: canine; PC12: rat; MCF7: human).

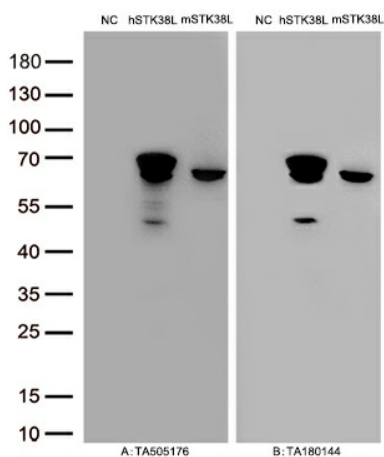
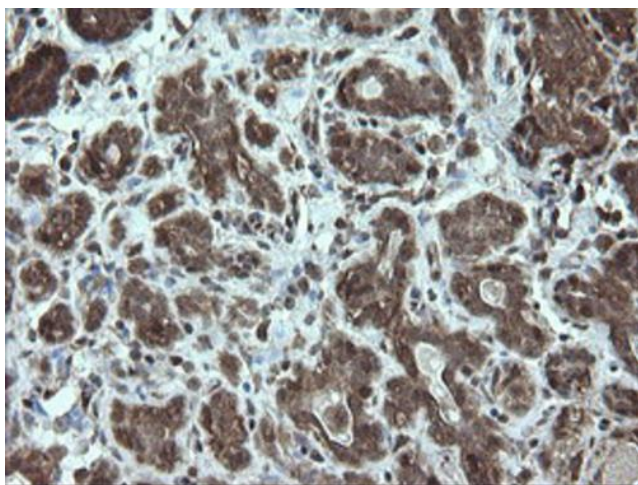
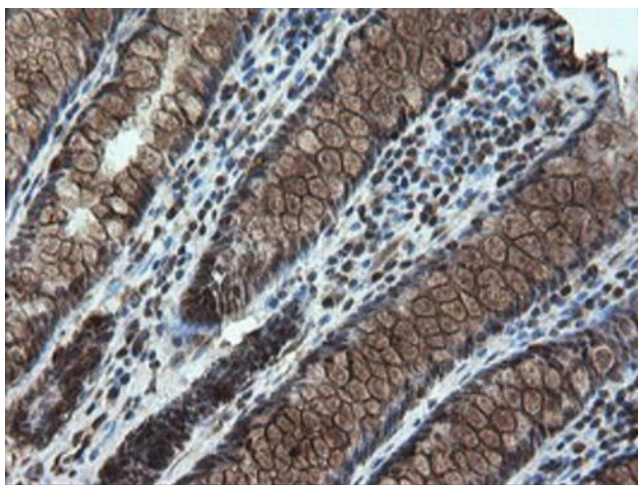


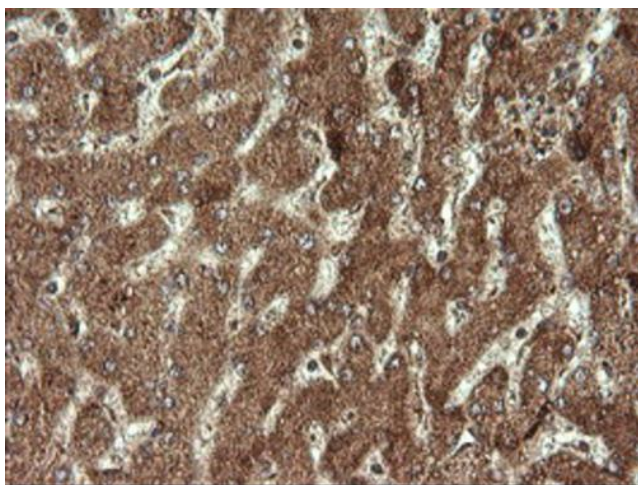
Figure A, Western blot analysis of overexpressed lysates (15ug per lane) from HEK293T cells transfected with empty plasmid ([PS100001], NC), human STK38L plasmid ([RC206074], hSTK38L), mouse STK38L plasmid ([MR207529], mSTK38L) using anti-STK38L antibody [TA505176] (1:500). Figure B, Western blot analysis of the same samples as figure A with anti-DDK antibody [TA180144], 1:1000



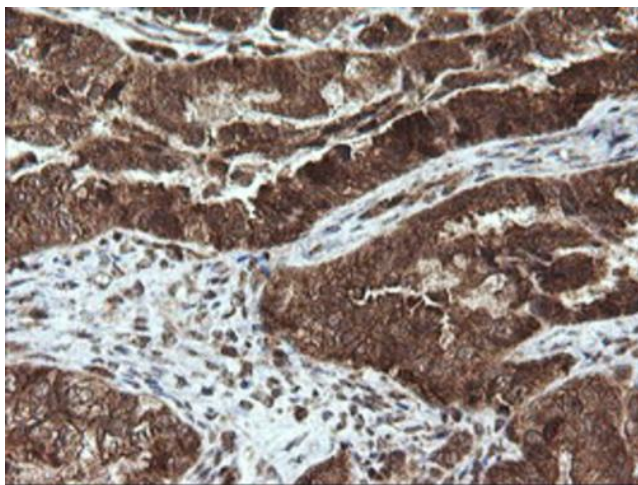
Immunohistochemical staining of paraffin-embedded Human breast tissue within the normal limits using anti-STK38L mouse monoclonal antibody. (Heat-induced epitope retrieval by 10mM citric buffer, pH6.0, 120°C for 3min, [TA505176])



Immunohistochemical staining of paraffin-embedded Human colon tissue within the normal limits using anti-STK38L mouse monoclonal antibody. (Heat-induced epitope retrieval by 10mM citric buffer, pH6.0, 120°C for 3min, [TA505176])

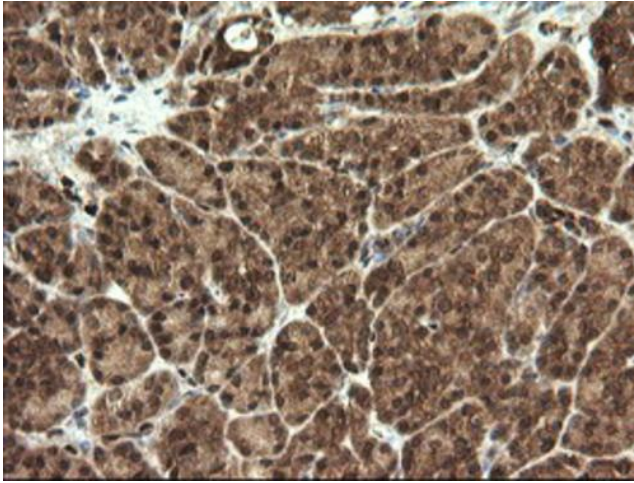


Immunohistochemical staining of paraffin-embedded Human liver tissue within the normal limits using anti-STK38L mouse monoclonal antibody. (Heat-induced epitope retrieval by 10mM citric buffer, pH6.0, 120°C for 3min, [TA505176])

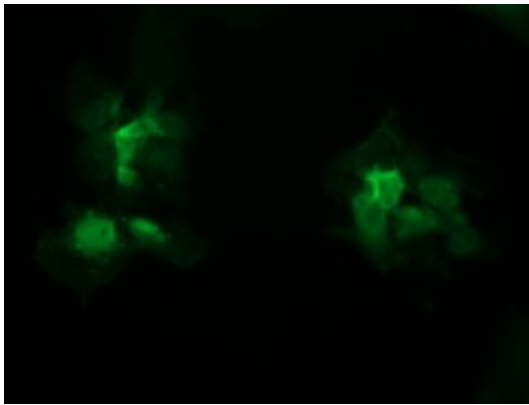


Immunohistochemical staining of paraffin-embedded Adenocarcinoma of Human ovary tissue using anti-STK38L mouse monoclonal antibody. (Heat-induced epitope retrieval by 10mM citric buffer, pH6.0, 120°C for 3min, [TA505176])





Immunohistochemical staining of paraffin-embedded Human pancreas tissue within the normal limits using anti-STK38L mouse monoclonal antibody. (Heat-induced epitope retrieval by 10mM citric buffer, pH6.0, 120°C for 3min, [TA505176])



Anti-STK38L mouse monoclonal antibody ([TA505176]) immunofluorescent staining of COS7 cells transiently transfected by pCMV6-ENTRY STK38L ([RC206074]).