

Product datasheet for TA505176

STK38L Mouse Monoclonal Antibody [Clone ID: OTI4D8]

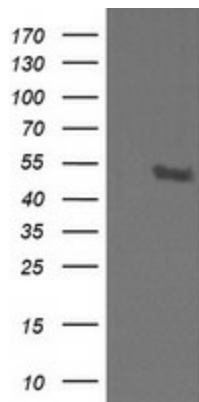
Product data:

Product Type:	Primary Antibodies
Clone Name:	OTI4D8
Applications:	IF, IHC, WB
Recommended Dilution:	WB 1:200~2000, IHC 1:150, IF 1:100
Reactivity:	Human, Monkey, Mouse, Rat, Dog
Host:	Mouse
Isotype:	IgG1
Clonality:	Monoclonal
Immunogen:	Human recombinant protein fragment corresponding to amino acids 1-281 of human STK38L(NP_055815) produced in E.coli.
Formulation:	PBS (PH 7.3) containing 1% BSA, 50% glycerol and 0.02% sodium azide.
Concentration:	1 mg/ml
Purification:	Purified from mouse ascites fluids or tissue culture supernatant by affinity chromatography (protein A/G)
Storage:	Store at -20°C as received.
Stability:	Stable for 12 months from date of receipt.
Predicted Protein Size:	53.8 kDa
Gene Name:	serine/threonine kinase 38 like
Database Link:	NP_055815 Entrez Gene 232533 MouseEntrez Gene 691337 RatEntrez Gene 477663 DogEntrez Gene 711047 MonkeyEntrez Gene 23012 Human
Synonyms:	NDR2
Protein Families:	Druggable Genome, Protein Kinase

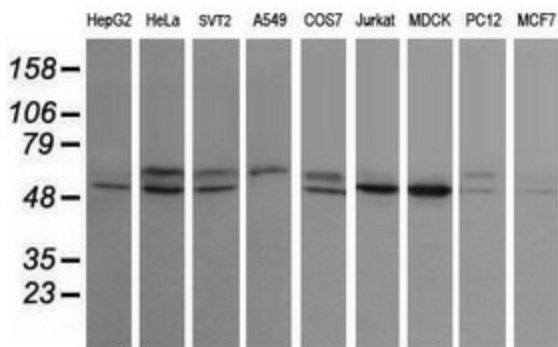


[View online »](#)

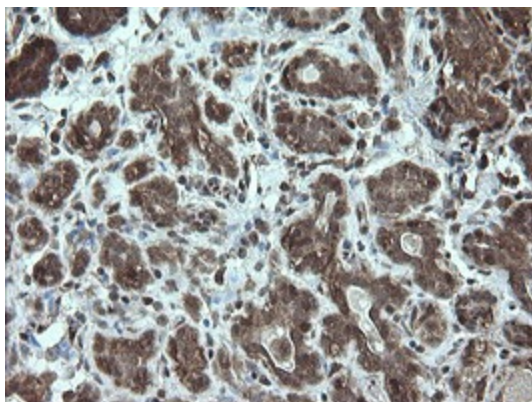
Product images:



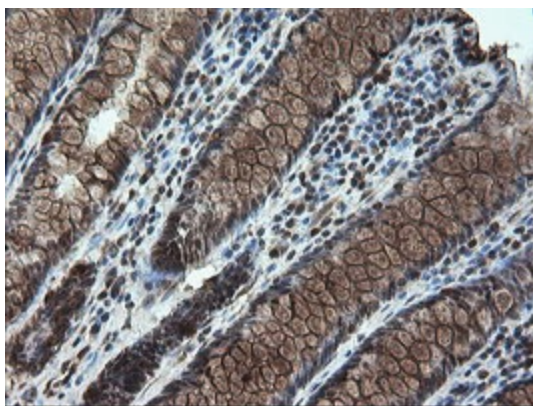
HEK293T cells were transfected with the pCMV6-ENTRY control (Left lane) or pCMV6-ENTRY STK38L ([RC206074], Right lane) cDNA for 48 hrs and lysed. Equivalent amounts of cell lysates (5 ug per lane) were separated by SDS-PAGE and immunoblotted with anti-STK38L. Positive lysates [LY414864] (100ug) and [LC414864] (20ug) can be purchased separately from OriGene.



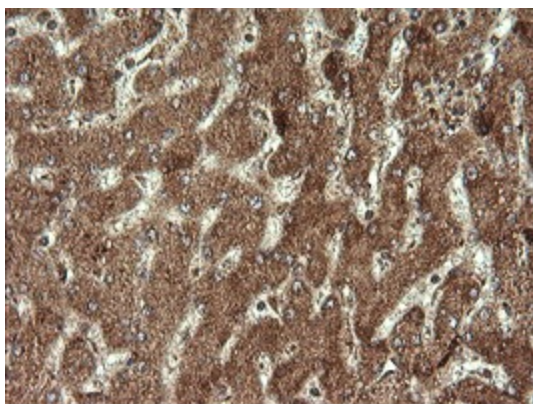
Western blot analysis of extracts (35ug) from 9 different cell lines by using anti-STK38L monoclonal antibody (HepG2: human; HeLa: human; SVT2: mouse; A549: human; COS7: monkey; Jurkat: human; MDCK: canine; PC12: rat; MCF7: human).



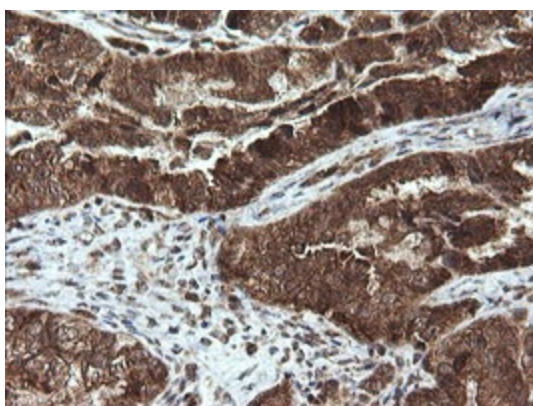
Immunohistochemical staining of paraffin-embedded Human breast tissue within the normal limits using anti-STK38L mouse monoclonal antibody. (Heat-induced epitope retrieval by 10mM citric buffer, pH6.0, 120°C for 3min, TA505176)



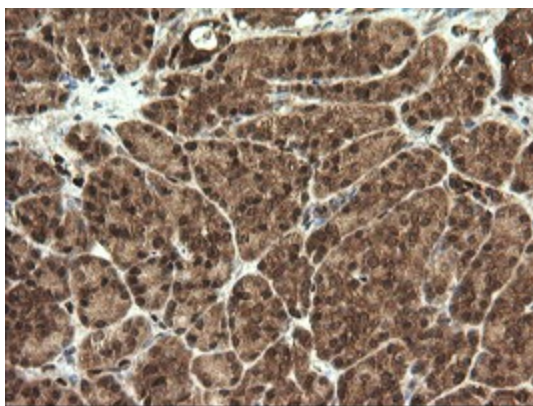
Immunohistochemical staining of paraffin-embedded Human colon tissue within the normal limits using anti-STK38L mouse monoclonal antibody. (Heat-induced epitope retrieval by 10mM citric buffer, pH6.0, 120°C for 3min, TA505176)



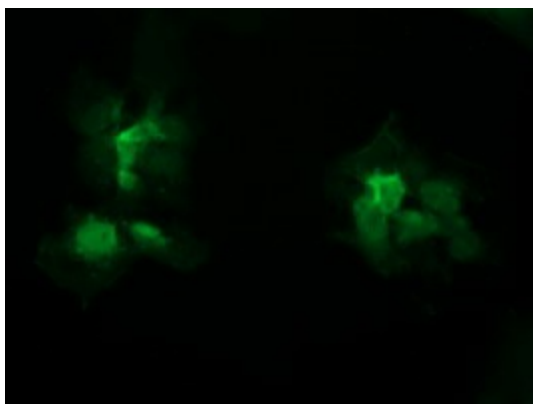
Immunohistochemical staining of paraffin-embedded Human liver tissue within the normal limits using anti-STK38L mouse monoclonal antibody. (Heat-induced epitope retrieval by 10mM citric buffer, pH6.0, 120°C for 3min, TA505176)



Immunohistochemical staining of paraffin-embedded Adenocarcinoma of Human ovary tissue using anti-STK38L mouse monoclonal antibody. (Heat-induced epitope retrieval by 10mM citric buffer, pH6.0, 120°C for 3min, TA505176)



Immunohistochemical staining of paraffin-embedded Human pancreas tissue within the normal limits using anti-STK38L mouse monoclonal antibody. (Heat-induced epitope retrieval by 10mM citric buffer, pH6.0, 120°C for 3min, TA505176)



Anti-STK38L mouse monoclonal antibody (TA505176) immunofluorescent staining of COS7 cells transiently transfected by pCMV6-ENTRY STK38L ([RC206074]).