

## Product datasheet for **TA505168**

### UBE2S Mouse Monoclonal Antibody [Clone ID: OTI1B5]

#### Product data:

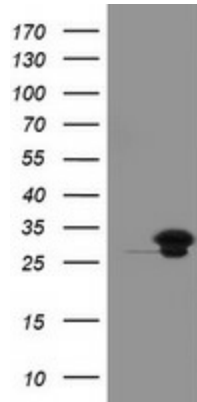
Product Type:	Primary Antibodies
Clone Name:	OTI1B5
Applications:	FC, WB
Recommended Dilution:	WB 1:2000, FLOW 1:100
Reactivity:	Human, Mouse, Rat
Host:	Mouse
Isotype:	IgG1
Clonality:	Monoclonal
Immunogen:	Full length human recombinant protein of human UBE2S(NP_055316) produced in E.coli.
Formulation:	PBS (pH 7.3) containing 1% BSA, 50% glycerol and 0.02% sodium azide.
Concentration:	1 mg/ml
Purification:	Purified from mouse ascites fluids or tissue culture supernatant by affinity chromatography (protein A/G)
Conjugation:	Unconjugated
Storage:	Store at -20°C as received.
Stability:	Stable for 12 months from date of receipt.
Predicted Protein Size:	23.7 kDa
Gene Name:	ubiquitin conjugating enzyme E2 S
Database Link:	<a href="#">NP_055316</a> <a href="#">Entrez Gene 77891 Mouse</a> <a href="#">Entrez Gene 292588 Rat</a> <a href="#">Entrez Gene 27338 Human</a> <a href="#">Q16763</a>
Background:	This gene encodes a member of the ubiquitin-conjugating enzyme family. The encoded protein is able to form a thiol ester linkage with ubiquitin in a ubiquitin activating enzyme-dependent manner, a characteristic property of ubiquitin carrier proteins. [provided by RefSeq]. COMPLETENESS: complete on the 3' end.
Synonyms:	E2-EPF; E2EPF; EPF5
Protein Families:	Druggable Genome



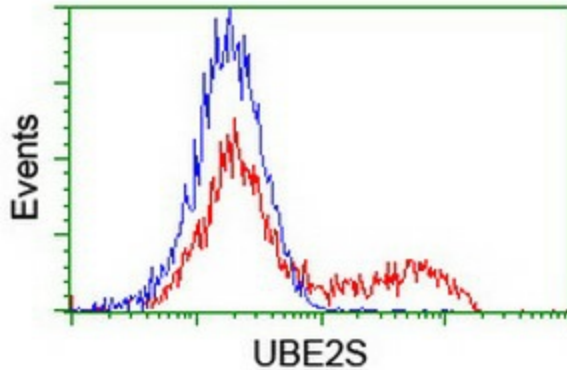
[View online »](#)

Protein Pathways: Ubiquitin mediated proteolysis

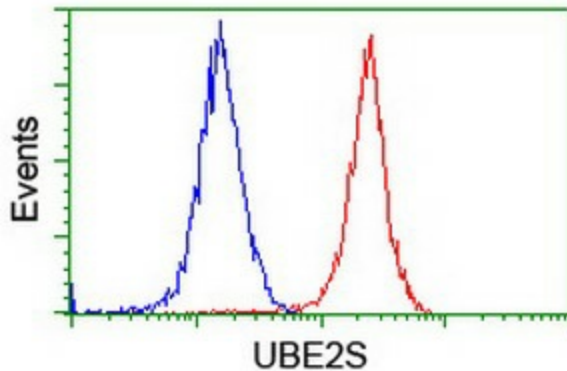
**Product images:**



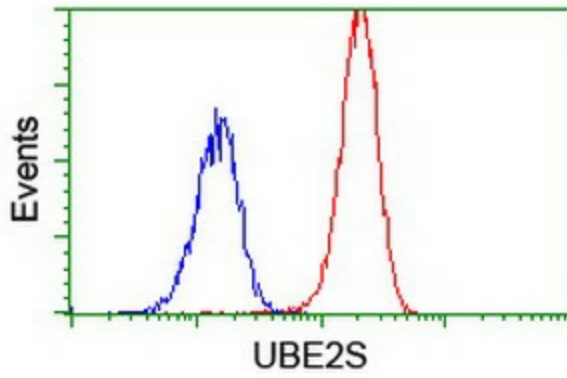
HEK293T cells were transfected with the pCMV6-ENTRY control (Left lane) or pCMV6-ENTRY UBE2S ([RC224851], Right lane) cDNA for 48 hrs and lysed. Equivalent amounts of cell lysates (5 ug per lane) were separated by SDS-PAGE and immunoblotted with anti-UBE2S. Positive lysates [LY402342] (100ug) and [LC402342] (20ug) can be purchased separately from OriGene.



HEK293T cells transfected with either [RC224851] overexpress plasmid (Red) or empty vector control plasmid (Blue) were immunostained by anti-UBE2S antibody (TA505168), and then analyzed by flow cytometry.



Flow cytometric Analysis of HeLa cells, using anti-UBE2S antibody (TA505168), (Red), compared to a nonspecific negative control antibody, (Blue).



Flow cytometric Analysis of Jurkat cells, using anti-UBE2S antibody (TA505168), (Red), compared to a nonspecific negative control antibody, (Blue).