

## Product datasheet for **TA505163BM**

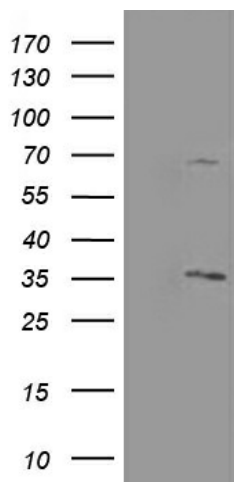
### PLPBP Mouse Monoclonal Antibody (HRP conjugated) [Clone ID: OTI3A6]

#### Product data:

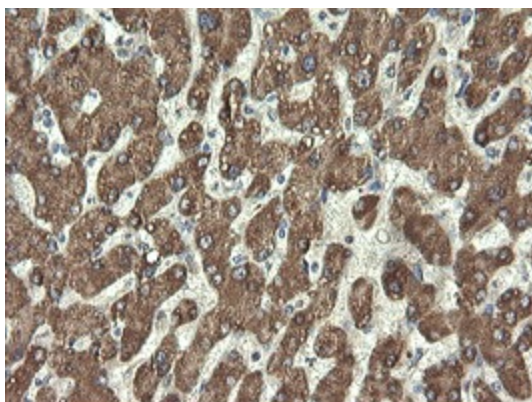
Product Type:	Primary Antibodies
Clone Name:	OTI3A6
Applications:	FC, IHC, WB
Recommended Dilution:	WB 1:2000, IHC 1:150, FLOW 1:100
Reactivity:	Human
Host:	Mouse
Isotype:	IgG1
Clonality:	Monoclonal
Immunogen:	Full length human recombinant protein of human PROSC(NP_009129) produced in E.coli.
Formulation:	PBS (pH 7.3) containing 1% BSA, 50% glycerol.
Concentration:	0.5 mg/ml
Purification:	Purified from mouse ascites fluids or tissue culture supernatant by affinity chromatography (protein A/G)
Conjugation:	HRP
Storage:	Store at -20°C as received.
Stability:	Stable for 12 months from date of receipt.
Predicted Protein Size:	30.2 kDa
Gene Name:	pyridoxal phosphate binding protein
Database Link:	<a href="#">NP_009129</a> <a href="#">Entrez Gene 11212 Human</a> <a href="#">O94903</a>
Synonyms:	FLJ11861



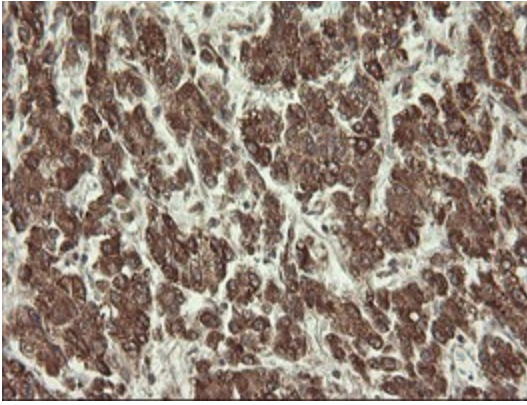
[View online »](#)

**Product images:**

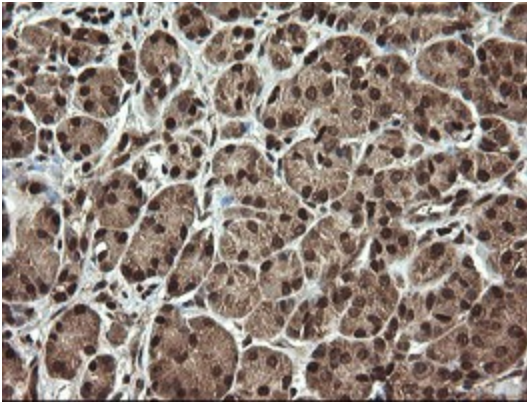
HEK293T cells were transfected with the pCMV6-ENTRY control (Left lane) or pCMV6-ENTRY PROSC ([RC200853], Right lane) cDNA for 48 hrs and lysed. Equivalent amounts of cell lysates (5 ug per lane) were separated by SDS-PAGE and immunoblotted with anti-PROSC. Positive lysates [LY416132] (100ug) and [LC416132] (20ug) can be purchased separately from OriGene.



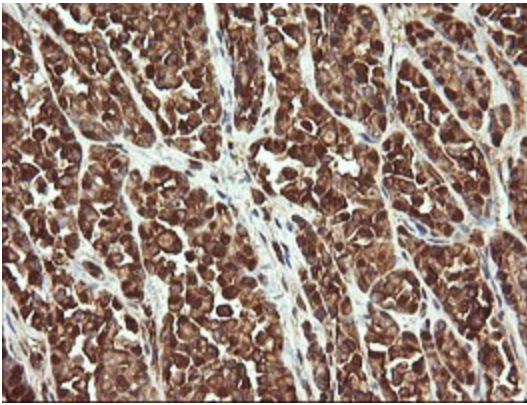
Immunohistochemical staining of paraffin-embedded Human liver tissue within the normal limits using anti-PROSC mouse monoclonal antibody. (Heat-induced epitope retrieval by 10mM citric buffer, pH6.0, 100°C for 10min, [TA505163])



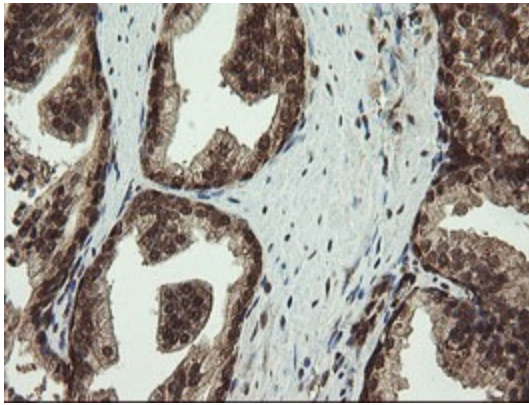
Immunohistochemical staining of paraffin-embedded Carcinoma of Human liver tissue using anti-PROSC mouse monoclonal antibody. (Heat-induced epitope retrieval by 10mM citric buffer, pH6.0, 100°C for 10min, [TA505163])



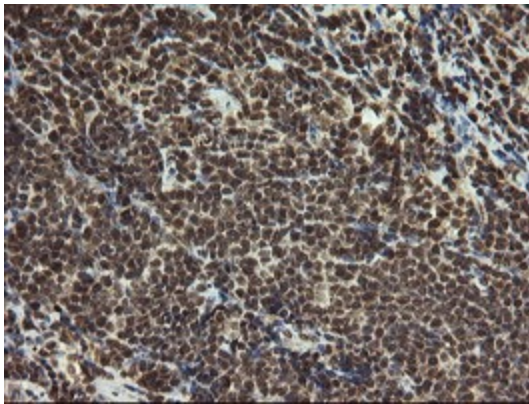
Immunohistochemical staining of paraffin-embedded Human pancreas tissue within the normal limits using anti-PROSC mouse monoclonal antibody. (Heat-induced epitope retrieval by 10mM citric buffer, pH6.0, 100°C for 10min, [TA505163])



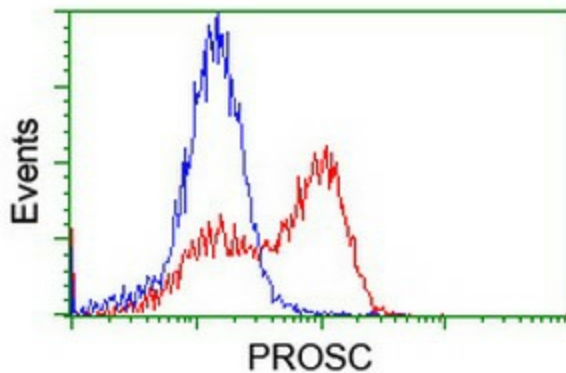
Immunohistochemical staining of paraffin-embedded Carcinoma of Human thyroid tissue using anti-PROSC mouse monoclonal antibody. (Heat-induced epitope retrieval by 10mM citric buffer, pH6.0, 100°C for 10min, [TA505163])



Immunohistochemical staining of paraffin-embedded Human prostate tissue within the normal limits using anti-PROSC mouse monoclonal antibody. (Heat-induced epitope retrieval by 10mM citric buffer, pH6.0, 100°C for 10min, [TA505163])



Immunohistochemical staining of paraffin-embedded Human lymphoma tissue using anti-PROSC mouse monoclonal antibody. (Heat-induced epitope retrieval by 10mM citric buffer, pH6.0, 100°C for 10min, [TA505163])



HEK293T cells transfected with either [RC200853] overexpress plasmid (Red) or empty vector control plasmid (Blue) were immunostained by anti-PROSC antibody ([TA505163]), and then analyzed by flow cytometry.