

Product datasheet for **TA505162AM**

PLPBP Mouse Monoclonal Antibody (Biotin conjugated) [Clone ID: OTI1G2]

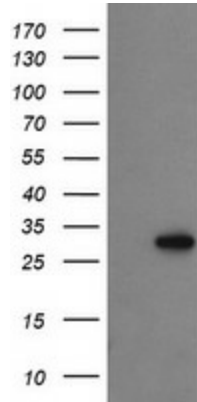
Product data:

Product Type:	Primary Antibodies
Clone Name:	OTI1G2
Applications:	FC, IF, IHC, WB
Recommended Dilution:	WB 1:200~2000, IHC 1:150, IF 1:100, FLOW 1:100
Reactivity:	Human
Host:	Mouse
Isotype:	IgG1
Clonality:	Monoclonal
Immunogen:	Full length human recombinant protein of human PROSC(NP_009129) produced in E.coli.
Formulation:	PBS (pH 7.3) containing 1% BSA, 50% glycerol and 0.02% sodium azide.
Concentration:	0.5 mg/ml
Purification:	Purified from mouse ascites fluids or tissue culture supernatant by affinity chromatography (protein A/G)
Conjugation:	Biotin
Storage:	Store at -20°C as received.
Stability:	Stable for 12 months from date of receipt.
Predicted Protein Size:	30.2 kDa
Gene Name:	pyridoxal phosphate binding protein
Database Link:	NP_009129 Entrez Gene 11212 Human O94903
Synonyms:	FLJ11861

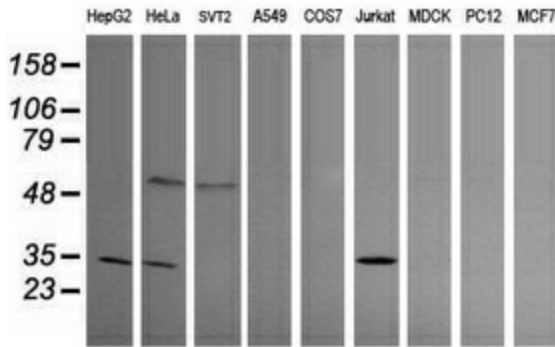


[View online »](#)

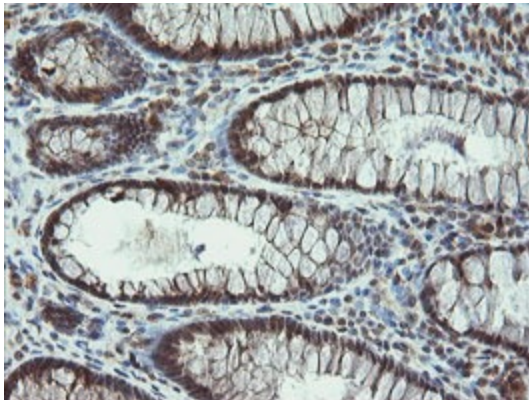
Product images:



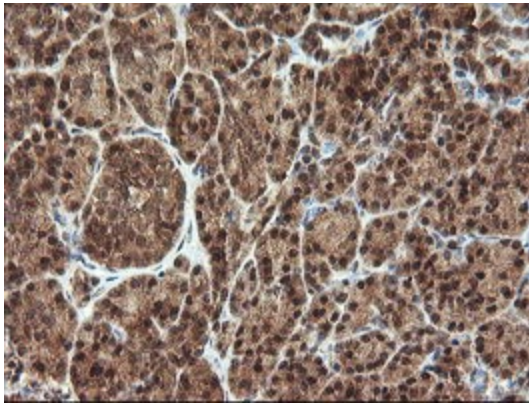
HEK293T cells were transfected with the pCMV6-ENTRY control (Cat# [PS100001], Left lane) or pCMV6-ENTRY PROSC (Cat# [RC200853], Right lane) cDNA for 48 hrs and lysed. Equivalent amounts of cell lysates (5 ug per lane) were separated by SDS-PAGE and immunoblotted with anti-PROSC (Cat# [TA505162]). Positive lysates [LY416132] (100ug) and [LC416132] (20ug) can be purchased separately from OriGene.



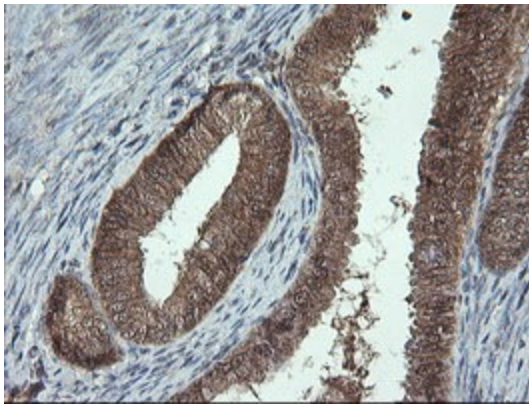
Western blot analysis of extracts (35ug) from 9 different cell lines by using anti-PROSC monoclonal antibody (HepG2: human; HeLa: human; SVT2: mouse; A549: human; COS7: monkey; Jurkat: human; MDCK: canine; PC12: rat; MCF7: human).



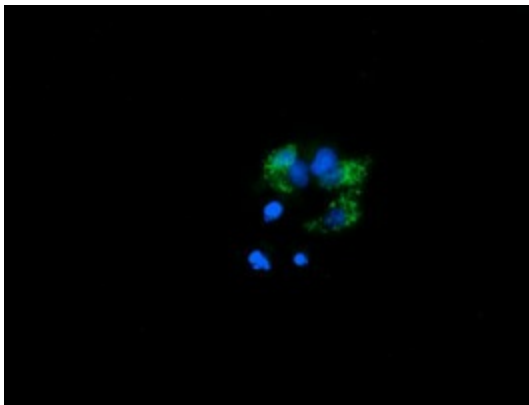
Immunohistochemical staining of paraffin-embedded Human colon tissue within the normal limits using anti-PROSC mouse monoclonal antibody. (Heat-induced epitope retrieval by 10mM citric buffer, pH6.0, 120°C for 3min, [TA505162])



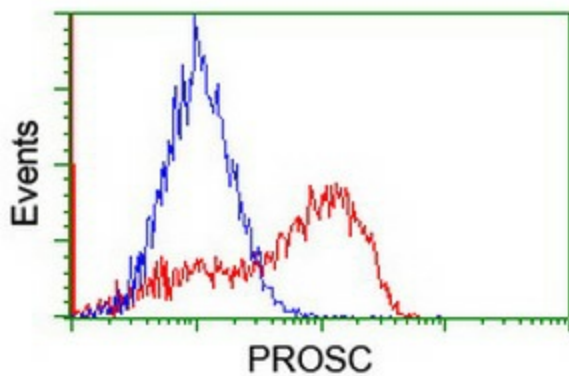
Immunohistochemical staining of paraffin-embedded Human pancreas tissue within the normal limits using anti-PROSC mouse monoclonal antibody. (Heat-induced epitope retrieval by 10mM citric buffer, pH6.0, 120°C for 3min, [TA505162])



Immunohistochemical staining of paraffin-embedded Adenocarcinoma of Human endometrium tissue using anti-PROSC mouse monoclonal antibody. (Heat-induced epitope retrieval by 10mM citric buffer, pH6.0, 120°C for 3min, [TA505162])



Anti-PROSC mouse monoclonal antibody ([TA505162]) immunofluorescent staining of COS7 cells transiently transfected by pCMV6-ENTRY PROSC ([RC200853]).



HEK293T cells transfected with either [RC200853] overexpress plasmid (Red) or empty vector control plasmid (Blue) were immunostained by anti-PROSC antibody ([TA505162]), and then analyzed by flow cytometry.