

## Product datasheet for **TA505147S**

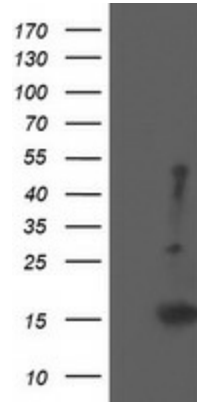
### EIF5A2 Mouse Monoclonal Antibody [Clone ID: OTI6F7]

#### Product data:

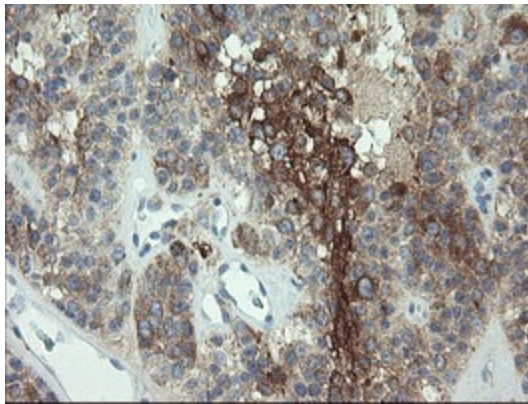
Product Type:	Primary Antibodies
Clone Name:	OTI6F7
Applications:	FC, IHC, WB
Recommended Dilution:	WB 1:2000, IHC 1:150, FLOW 1:100
Reactivity:	Human, Mouse, Rat
Host:	Mouse
Isotype:	IgG1
Clonality:	Monoclonal
Immunogen:	Full length human recombinant protein of human EIF5A2(NP_065123) produced in HEK293T cell.
Formulation:	PBS (pH 7.3) containing 1% BSA, 50% glycerol and 0.02% sodium azide.
Concentration:	1 mg/ml
Purification:	Purified from mouse ascites fluids or tissue culture supernatant by affinity chromatography (protein A/G)
Conjugation:	Unconjugated
Storage:	Store at -20°C as received.
Stability:	Stable for 12 months from date of receipt.
Predicted Protein Size:	16.6 kDa
Gene Name:	eukaryotic translation initiation factor 5A2
Database Link:	<a href="#">NP_065123</a> <a href="#">Entrez Gene 208691</a> <a href="#">MouseEntrez Gene 310261</a> <a href="#">RatEntrez Gene 56648</a> <a href="#">Human Q9GZV4</a>
Synonyms:	EIF-5A2; eIF5AII



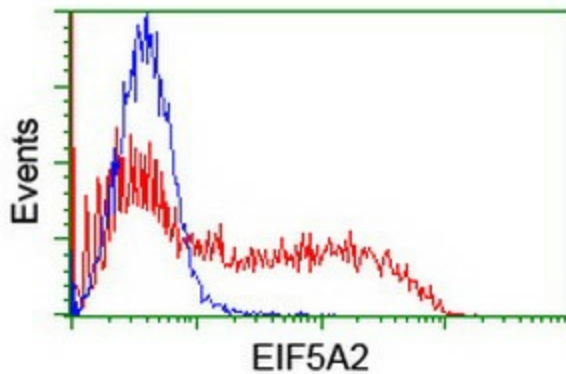
[View online »](#)

**Product images:**


HEK293T cells were transfected with the pCMV6-ENTRY control (Left lane) or pCMV6-ENTRY EIF5A2 ([RC206249], Right lane) cDNA for 48 hrs and lysed. Equivalent amounts of cell lysates (5 ug per lane) were separated by SDS-PAGE and immunoblotted with anti-EIF5A2. Positive lysates [LY412495] (100ug) and [LC412495] (20ug) can be purchased separately from OriGene.



Immunohistochemical staining of paraffin-embedded Carcinoma of Human pancreas tissue using anti-EIF5A2 mouse monoclonal antibody. (Heat-induced epitope retrieval by 10mM citric buffer, pH6.0, 100°C for 10min, [TA505147])



HEK293T cells transfected with either [RC206249] overexpress plasmid (Red) or empty vector control plasmid (Blue) were immunostained by anti-EIF5A2 antibody ([TA505147]), and then analyzed by flow cytometry.