

Product datasheet for **TA505147M**

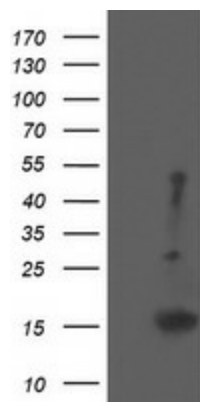
EIF5A2 Mouse Monoclonal Antibody [Clone ID: OTI6F7]

Product data:

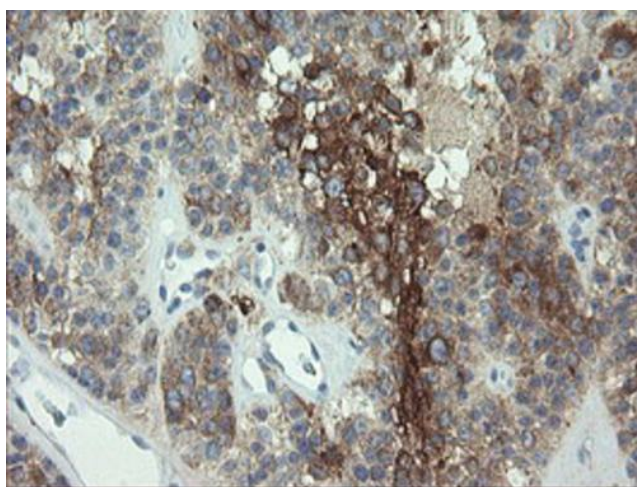
| | |
|-------------------------|--|
| Product Type: | Primary Antibodies |
| Clone Name: | OTI6F7 |
| Applications: | FC, IHC, WB |
| Recommended Dilution: | WB 1:2000, IHC 1:150, FLOW 1:100 |
| Reactivity: | Human, Mouse, Rat |
| Host: | Mouse |
| Isotype: | IgG1 |
| Clonality: | Monoclonal |
| Immunogen: | Full length human recombinant protein of human EIF5A2(NP_065123) produced in HEK293T cell. |
| Formulation: | PBS (pH 7.3) containing 1% BSA, 50% glycerol and 0.02% sodium azide. |
| Concentration: | 1 mg/ml |
| Purification: | Purified from mouse ascites fluids or tissue culture supernatant by affinity chromatography (protein A/G) |
| Conjugation: | Unconjugated |
| Storage: | Store at -20°C as received. |
| Stability: | Stable for 12 months from date of receipt. |
| Predicted Protein Size: | 16.6 kDa |
| Gene Name: | eukaryotic translation initiation factor 5A2 |
| Database Link: | NP_065123 Entrez Gene 208691 Mouse Entrez Gene 310261 Rat Entrez Gene 56648 Human Q9GZV4 |
| Synonyms: | EIF-5A2; eIF5AII |


[View online »](#)

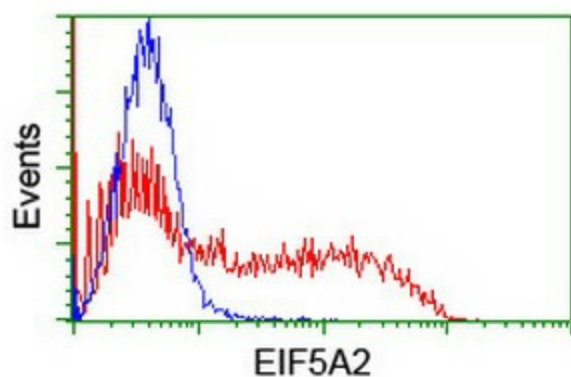
Product images:



HEK293T cells were transfected with the pCMV6-ENTRY control (Left lane) or pCMV6-ENTRY EIF5A2 ([RC206249], Right lane) cDNA for 48 hrs and lysed. Equivalent amounts of cell lysates (5 ug per lane) were separated by SDS-PAGE and immunoblotted with anti-EIF5A2. Positive lysates [LY412495] (100ug) and [LC412495] (20ug) can be purchased separately from OriGene.



Immunohistochemical staining of paraffin-embedded Carcinoma of Human pancreas tissue using anti-EIF5A2 mouse monoclonal antibody. Heat-induced epitope retrieval by EDTA solution buffer pH 8.0 at 120°C for 3 min.



HEK293T cells transfected with either [RC206249] overexpress plasmid (Red) or empty vector control plasmid (Blue) were immunostained by anti-EIF5A2 antibody ([TA505147]), and then analyzed by flow cytometry.