

Product datasheet for **TA505140BM**

RIOK2 Mouse Monoclonal Antibody (HRP conjugated) [Clone ID: OTI3E11]

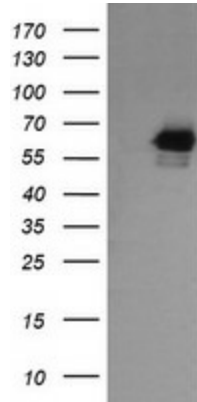
Product data:

Product Type:	Primary Antibodies
Clone Name:	OTI3E11
Applications:	IF, IHC, WB
Recommended Dilution:	WB 1:500~4000, IHC 1:150, IF 1:100
Reactivity:	Human, Monkey, Mouse
Host:	Mouse
Isotype:	IgG1
Clonality:	Monoclonal
Immunogen:	Human recombinant protein fragment corresponding to amino acids 277-552 of human RIOK2(NP_060813) produced in E.coli.
Formulation:	PBS (pH 7.4) containing 1% BSA, 50% glycerol.
Concentration:	0.5 mg/ml
Purification:	Purified from mouse ascites fluids or tissue culture supernatant by affinity chromatography (protein A/G)
Conjugation:	HRP
Storage:	Store at -20°C as received.
Stability:	Stable for 12 months from date of receipt.
Predicted Protein Size:	63.1 kDa
Gene Name:	RIO kinase 2
Database Link:	NP_060813 Entrez Gene 67045 Mouse Entrez Gene 700738 Monkey Entrez Gene 55781 Human Q9BVS4
Synonyms:	RIO2
Protein Families:	Druggable Genome, Protein Kinase

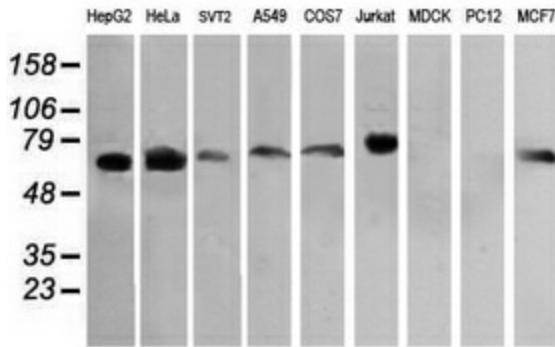


[View online »](#)

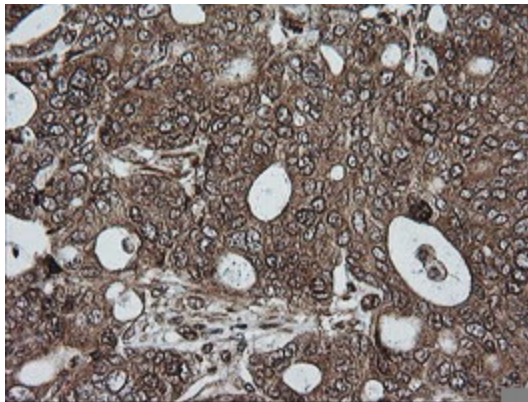
Product images:



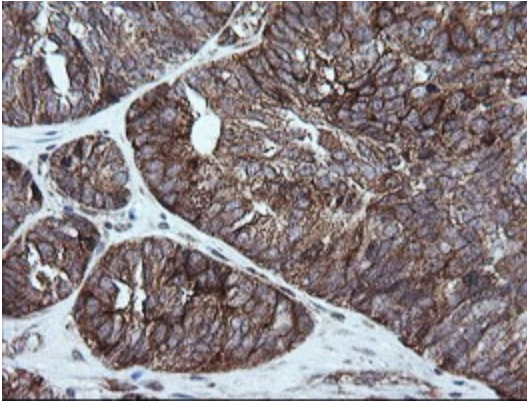
HEK293T cells were transfected with the pCMV6-ENTRY control (Cat# [PS100001], Left lane) or pCMV6-ENTRY RIOK2 (Cat# [RC201484], Right lane) cDNA for 48 hrs and lysed. Equivalent amounts of cell lysates (5 ug per lane) were separated by SDS-PAGE and immunoblotted with anti-RIOK2(Cat# [TA505140]). Positive lysates [LY402668] (100ug) and [LC402668] (20ug) can be purchased separately from OriGene.



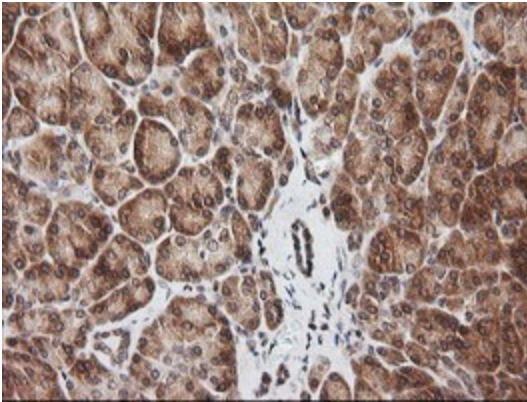
Western blot analysis of extracts (35ug) from 9 different cell lines by using anti-RIOK2 monoclonal antibody (HepG2: human; HeLa: human; SVT2: mouse; A549: human; COS7: monkey; Jurkat: human; MDCK: canine; PC12: rat; MCF7: human).



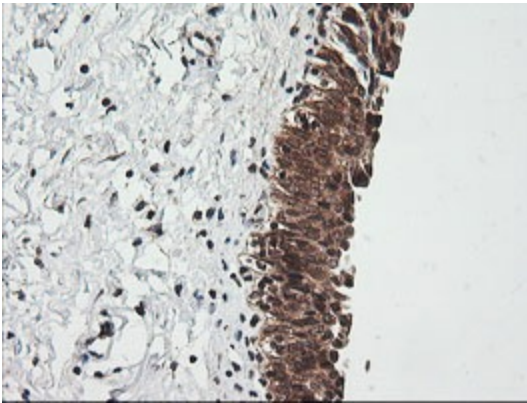
Immunohistochemical staining of paraffin-embedded Adenocarcinoma of Human breast tissue using anti-RIOK2 mouse monoclonal antibody. (Heat-induced epitope retrieval by 10mM citric buffer, pH6.0, 100°C for 10min, [TA505140])



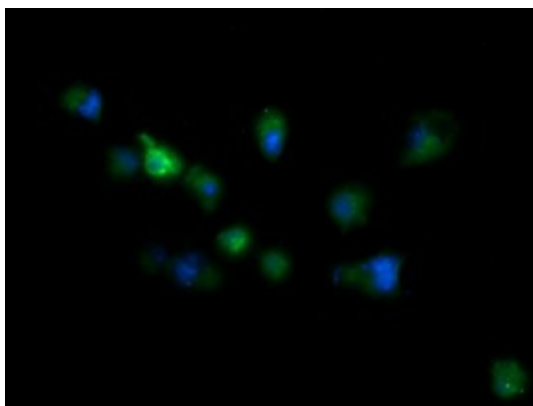
Immunohistochemical staining of paraffin-embedded Adenocarcinoma of Human ovary tissue using anti-RIOK2 mouse monoclonal antibody. (Heat-induced epitope retrieval by 10mM citric buffer, pH6.0, 100°C for 10min, [TA505140])



Immunohistochemical staining of paraffin-embedded Human pancreas tissue within the normal limits using anti-RIOK2 mouse monoclonal antibody. (Heat-induced epitope retrieval by 10mM citric buffer, pH6.0, 100°C for 10min, [TA505140])



Immunohistochemical staining of paraffin-embedded Human bladder tissue within the normal limits using anti-RIOK2 mouse monoclonal antibody. (Heat-induced epitope retrieval by 10mM citric buffer, pH6.0, 100°C for 10min, [TA505140])



Anti-RIOK2 mouse monoclonal antibody ([TA505140]) immunofluorescent staining of COS7 cells transiently transfected by pCMV6-ENTRY RIOK2 ([RC201484]).