

Product datasheet for **TA505140**

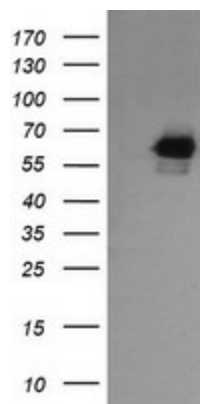
RIOK2 Mouse Monoclonal Antibody [Clone ID: OTI3E11]

Product data:

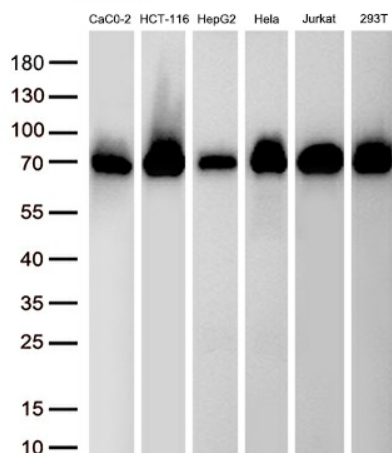
Product Type:	Primary Antibodies
Clone Name:	OTI3E11
Applications:	IF, IHC, WB
Recommended Dilution:	WB 1:500~4000, IHC 1:150, IF 1:100
Reactivity:	Human, Monkey, Mouse
Host:	Mouse
Isotype:	IgG1
Clonality:	Monoclonal
Immunogen:	Human recombinant protein fragment corresponding to amino acids 277-552 of human RIOK2(NP_060813) produced in E.coli.
Formulation:	PBS (pH 7.3) containing 1% BSA, 50% glycerol and 0.02% sodium azide.
Concentration:	1 mg/ml
Purification:	Purified from mouse ascites fluids or tissue culture supernatant by affinity chromatography (protein A/G)
Conjugation:	Unconjugated
Storage:	Store at -20°C as received.
Stability:	Stable for 12 months from date of receipt.
Predicted Protein Size:	63.1 kDa
Gene Name:	RIO kinase 2
Database Link:	NP_060813 Entrez Gene 67045 Mouse Entrez Gene 700738 Monkey Entrez Gene 55781 Human Q9BVS4
Synonyms:	RIO2
Protein Families:	Druggable Genome, Protein Kinase



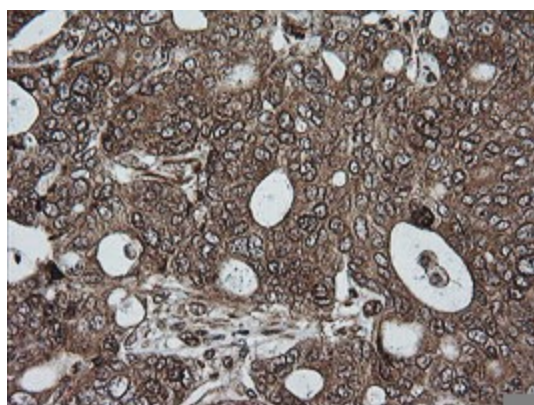
[View online »](#)

Product images:


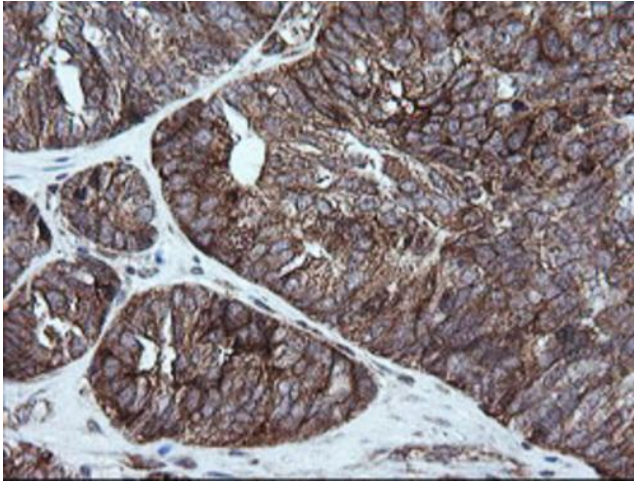
HEK293T cells were transfected with the pCMV6-ENTRY control (Cat# [PS100001], Left lane) or pCMV6-ENTRY RIOK2 (Cat# [RC201484], Right lane) cDNA for 48 hrs and lysed. Equivalent amounts of cell lysates (5 ug per lane) were separated by SDS-PAGE and immunoblotted with anti-RIOK2(Cat# TA505140). Positive lysates [LY402668] (100ug) and [LC402668] (20ug) can be purchased separately from OriGene.



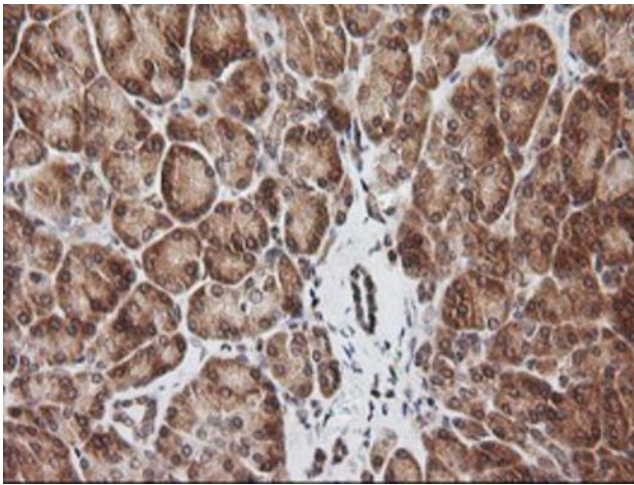
Western blot analysis of extracts (30ug per lane) from 6 different cell lines lysates by using anti-RIOK2 antibody (TA505140, 1:1000; 1mg/ml).



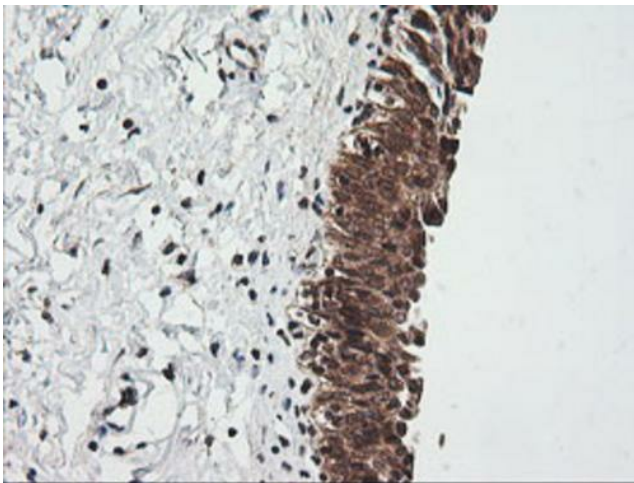
Immunohistochemical staining of paraffin-embedded Adenocarcinoma of Human breast tissue using anti-RIOK2 mouse monoclonal antibody. Heat-induced epitope retrieval by EDTA solution buffer pH 8.0 at 120°C for 3 min.



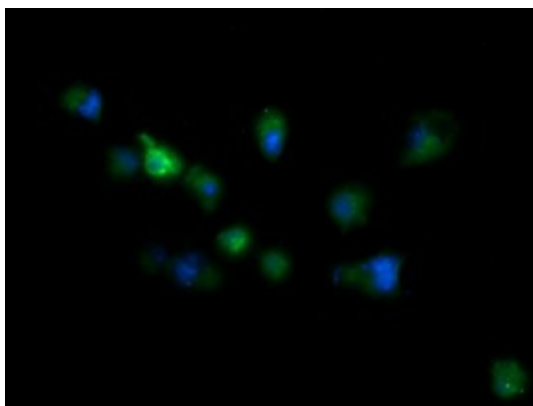
Immunohistochemical staining of paraffin-embedded Adenocarcinoma of Human ovary tissue using anti-RIOK2 mouse monoclonal antibody. Heat-induced epitope retrieval by EDTA solution buffer pH 8.0 at 120°C for 3 min.



Immunohistochemical staining of paraffin-embedded Human pancreas tissue within the normal limits using anti-RIOK2 mouse monoclonal antibody. Heat-induced epitope retrieval by EDTA solution buffer pH 8.0 at 120°C for 3 min.



Immunohistochemical staining of paraffin-embedded Human bladder tissue within the normal limits using anti-RIOK2 mouse monoclonal antibody. Heat-induced epitope retrieval by EDTA solution buffer pH 8.0 at 120°C for 3 min.



Anti-RIOK2 mouse monoclonal antibody (TA505140) immunofluorescent staining of COS7 cells transiently transfected by pCMV6-ENTRY RIOK2 ([RC201484]).